



IBM eServer iSeries

The Power of Linux on iSeries

Product Update

© 2000-2003 IBM Corporation

IBM eServer iSeries



iSeries Customers

90+% of iSeries Customers Have Windows Servers

	% of Small Customers	% of Medium Customers	% of Large Customers
Windows	94	91	87
Linux	30	17	12
AIX	20	12	22
NetWare	9	23	27
HP-UX	5	5	38
Sun Solaris	8	8	23
SCO UnixWare	10	5	4

84% of iSeries Customers Have Less than 20 NT Servers

# of NT Servers	% of Customers
1-5	46
6-10	25
11-20	14
21-200	14
201+	1

IBM Server Group NDB 2002

IBM IT Trends Survey for 2002, Updated 4Q 2002 for Customers with 100-999 Employees

© 2000-2003 IBM Corporation

The Linux Uprising

Oct 21, 2002: *NewForge*
[Wall Street Leans toward Linux](#)

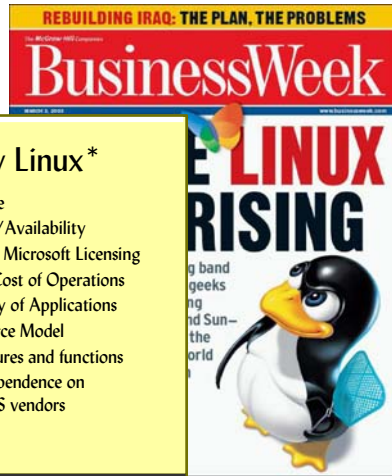
Feb 18, 2003: *Financial Times*
 Linux takes on the big boys. [The Alternative Operating System](#)

Apr 1, 2003: *SD Times*
 Linux Closer To Desktops in B...

May 28, 2003:
 City of Munich moves to Linux [Government](#)

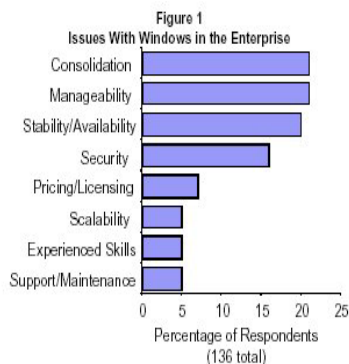
Why Linux*

- 1 Initial Price
- 2 Reliability/Availability
- 3 Issues with Microsoft Licensing
- 4 Ongoing Cost of Operations
- 5 Availability of Applications
- 6 Open Source Model
- 7 Linux features and functions
- 8 Reduce dependence on Current OS vendors



Windows Users Speak Out

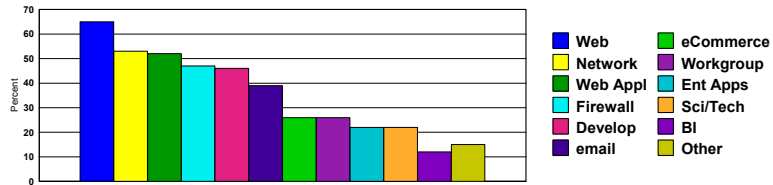
- Which do you consider the most important issue for Windows in the enterprise today?



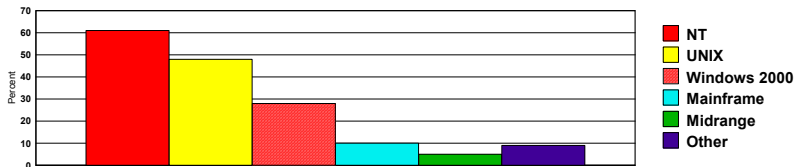
Source: Survey taken at Gartner's December 2002 Data Center Conference

Linux Market

Linux Application Use



Platform of Origin for Linux Consolidation



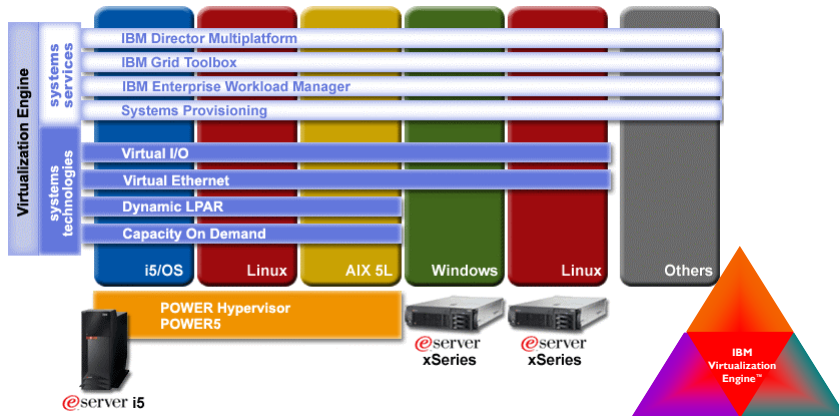
Server Brand Image Tracking: 2Q02 G7 Countries
Server Brand Image Tracking: 2Q02 G7 Countries

Linux on iSeries

Overview of implementation

IBM Virtualization Engine and eServer i5

Delivered first on eServer i5



Linux and iSeries

What does Linux Bring to iSeries

- f New Applications
 - Open Source
 - Solution Providers
- f New Resources and Skills
 - Virtual world-wide development team
 - Broad skill base
 - IBM investments in Linux

What does iSeries Bring to Linux

- f On Demand Virtualization
- f Integration
- f Reliability
- f Easy Management
- f Low Cost of Ownership
- f Award Winning Implementation



IBM eServer iSeries Wins "Best of Show"

LinuxWorld San Francisco
August 2001

"Best Productivity Application Finalist"

Capacity on Demand
LinuxWorld, New York City
January 2003

"Best Systems Integration Finalist"

Integrated Platform for e-business
LinuxWorld, San Francisco
August 2003

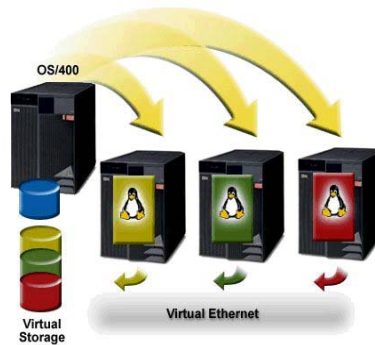
Linux on iSeries

On Demand Virtualization

- / Up to 10 Partitions per Processor
- / Dynamic resource movement
- / Virtual Storage
- / Virtual Ethernet
- / Capacity on Demand

Integration

- / Linux access to OS/400 Data and Applications
- / Server and Storage Management



www.ibm.com/eserver/series/linux

© 2000-2003 IBM Corporation

2003 iSeries Product Line

Support for new servers

- / Shared processor, Dynamic movement
- / Virtual Storage and Ethernet

Capacity Upgrade on Demand

- / Permanent and Temporary

Linux Processor Activation

- / Included in Enterprise Edition for i870 and i890
- / Extra Processor Activation for Linux

Education Vouchers

- / Included in Enterprise Edition for i825, i870, i890
- / Valid for Linux on iSeries Implementation Class

Service Vouchers

- / Included in Enterprise Edition for i825, i870, i890
- / Valid for iSeries Linux Integration QuickStart

iSeries 800



- / 1 Processor
- / Up to 9 Linux Partitions

iSeries 810



- / 1-2 Processors
- / Up to 19 Linux Partitions

iSeries 825



- / 3-6 Processors
- / Up to 31 Linux Partitions

iSeries 870



- / 8-16 Processors
- / Up to 31 Linux Partitions

iSeries 890



- / 16-32 Processors
- / Up to 31 Linux Partitions

© 2000-2003 IBM Corporation

2004 iSeries Product Line

Support for new servers

- / Shared processor, Dynamic movement
- / Virtual Storage and Ethernet

Capacity Upgrade on Demand

- / Permanent and Temporary

Linux Processor Activation

- / Included in i550 and Enterprise Edition for i570
- / Extra Processor Activation for Linux

Education Vouchers

- / Included in Enterprise Edition for i550 and i570
- / Valid for Linux on iSeries Implementation Class

Service Vouchers

- / Included in Enterprise Edition for i550 and i570
- / Valid for iSeries Linux Integration QuickStart

i5 520



- / 2 Processors
- / Up to 19 Linux Partitions

i5 550



- / 1-4 Processors
- / Up to 39 Linux Partitions

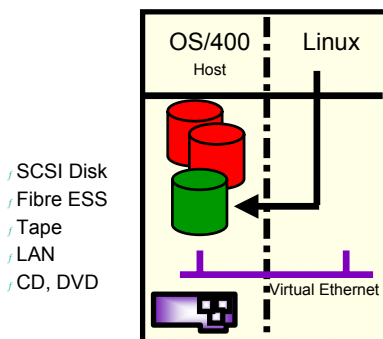
i5 570



- / 1-16 Processors
- / Up to 159 Linux Partitions

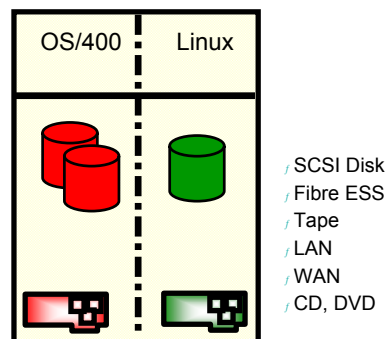
Linux I/O Flexibility

Virtual I/O



- Leverage iSeries resources
- OS/400 management

Direct I/O



- Dedicated resources
- Linux management

Storage Virtualization

- **Storage spaces created from OS/400**

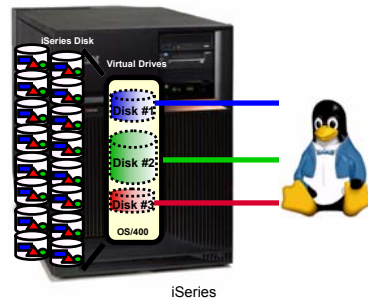
- f 1 MB to 64 GB each
 - f Up to 20 per Linux partition

- **Dynamically added to Linux**

- f Requires V5R2 Primary and Host

- **Shared Storage**

- f Storage spaces can be read from multiple partitions



- **Enables Linux to Leverage Advanced iSeries Storage Architecture**

- f Data automatically spread and protected
 - f More disk arms for better performance
 - f Consolidated Backup of OS/400 and Linux
 - f Automatic balancing of storage across drives
 - f Flexible Storage Management
 - f Easy setup of multiple Linux environments

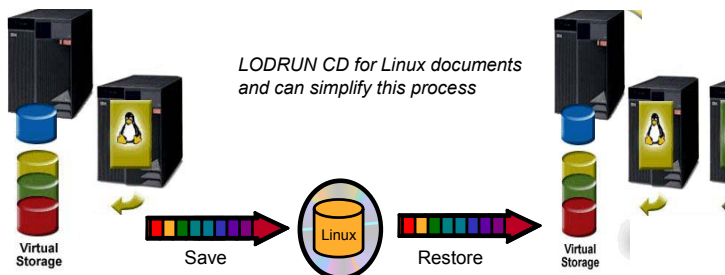
The Power of Virtualization

- **Virtual Storage**

- f OS/400 Virtual Storage Spaces are created for use by Linux partitions
 - f Storage spaces contain the entire Linux environment
 - f Linux environment can be saved and restored onto another system

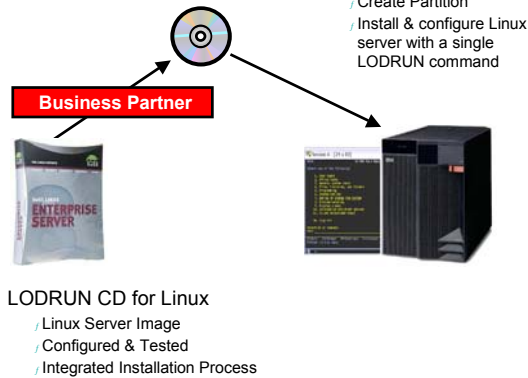
- **Virtual Ethernet**

- f Up to 16 virtual networks can be defined between partitions
 - f Linux partitions can communicate to internal and external networks without dedicated LAN adapters



LODRUN CD for Linux on iSeries

From Zero to Productivity in 3 easy steps



**Apache Web Server
Samba File Server**



Linux applications are ready to go



LODRUN CD for Linux Advantages

- **Shorten Time required to Install and Configure Linux**

f Can take the process from hours down to minutes

- **Reduce the skill required to Install and Configure Linux**

f Can be used by a person with few Linux technical skills

- **Reduce the risk associated with a Linux installation from scratch**

f Can provide a standard, tested environment

Deliverables / Responsibilities

■ IBM

- / Deliver LODRUN CD for Linux documentation
 - LODRUN CD Creation Guide
 - LODRUN CD Users Guide
- / Deliver LODRUN CD Scripts
- / Optional Service Offering to create LODRUN CD for Partners

■ Business Partner / ISV

- / Purchase appropriate Linux Distribution
- / Install Linux and create image to be duplicated
- / Create LODRUN CD
- / Use LODRUN CD to install Linux for customer
- / Perform additional customization of Linux environment

■ Customer

- / Purchase iSeries server that supports Linux
- / Purchase appropriate Linux Distribution
- / Purchase Service Offering from BP for Linux installation and configuration

Purchase Linux Distribution

- / To have a License to run Linux
- / To receive the full Linux distribution and documentation
- / To receive maintenance and support

Questions

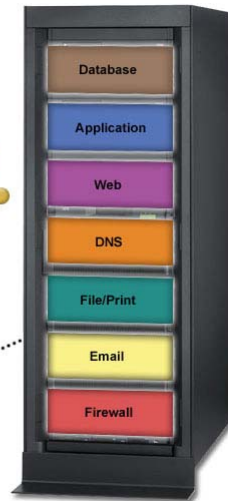
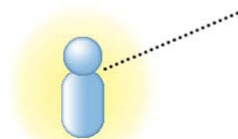
Contact: Linux Center of Competency in the iSeries Technology Center at rchlinux@us.ibm.com

Simplify Your Infrastructure



The Value of Virtualization

- Reduce costs by increasing asset utilization
- Redeploy talent to manage your business, not your infrastructure
- Rapidly provision new servers
- Drive new levels of IT staff productivity
- Consolidate storage & backup
- Simplify server management and operations
- Communicate more securely with virtual Ethernet

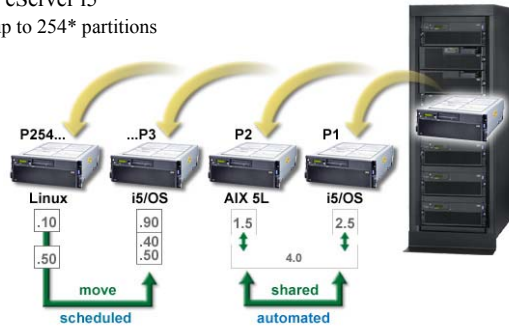


Linux on iSeries

Infrastructure management

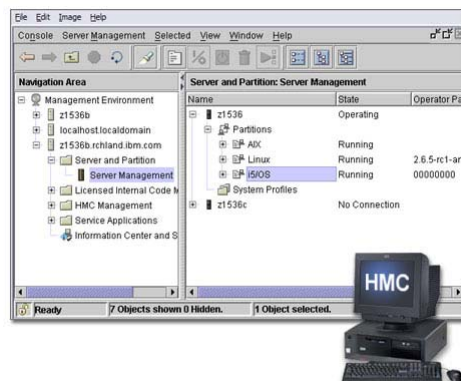
i5/OS V5R3 Dynamic Logical Partitioning

- Features new POWER Hypervisor™ for eServer i5
 - Supports i5/OS, AIX 5L and Linux and up to 254* partitions
- Increase server utilization rates across multiple workloads
 - Automatic processor balancing with uncapped partitions
- Improve fault tolerance and lower partition management costs
 - Primary partition replaced by Hardware Management Console (HMC)
- *An IBM Virtualization Engine systems technology*



Hardware Management Console (HMC)

- Single console for POWER5 servers
 - Pre-installed Linux-based workstation
 - Ethernet, desktop or rack mount
 - Supports local consoles, including 5250 console
 - Web-based System Manager Remote Client enables local or remote management for HMC control and status
- LPAR and CoD now configured via HMC
- Replaces primary partition and improves system resiliency
- Dynamic creation of new partitions



AIX 5L and IBM eServer i5

- Consolidate and manage UNIX® solutions
- Extend i5/OS with complementary AIX 5L applications
- Available on all eServer i5 servers
- Runs AIX 5L natively
- IBM Director Multiplatform provides management & monitoring tools

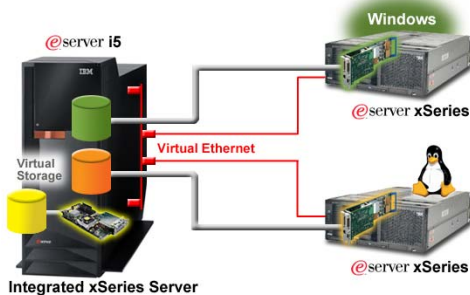


Linux and IBM eServer i5



- Common Linux distribution for POWER5 processor – based servers
 - Automatic processor balancing with uncapped partitions
- iSeries Navigator V5R3 enhancements
 - Start up, shut down Linux servers
 - Create/manage virtual storage spaces
- IBM Director Multiplatform provides management & monitoring tools

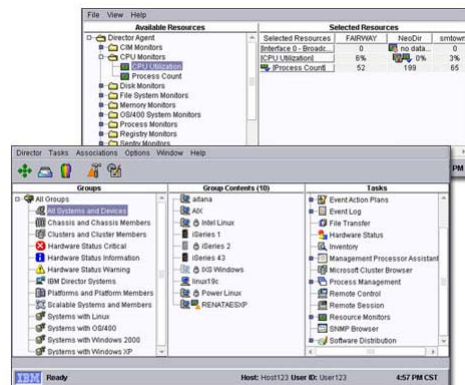
Integrating Windows & Linux Servers



- Consolidate Intel® processor-based Windows & Linux servers with the Integrated xSeries® Server & Integrated xSeries Adapter
- Windows Server™ 2003
 - Flexible options to manage passwords for OS/400 and Windows users
 - Increase storage space size up to 1TB, with maximum of 32TB per server
- Linux
 - IBM intends to provide support on selected IXS and xSeries servers attached to eServer i5 via the IXS/IXA*
 - Extends Linux application options
- IBM Director Multiplatform provides management & monitoring tools

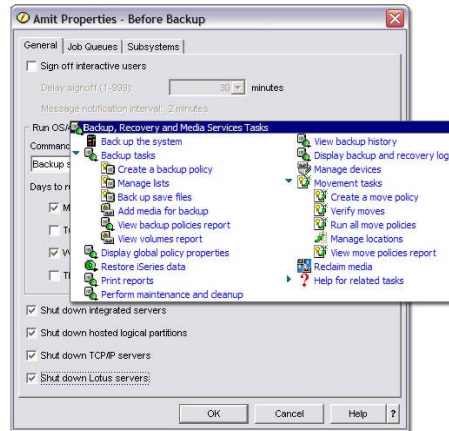
IBM Director Multiplatform

- Centralize management and monitoring for multiple operating environments
 - i5/OS, AIX 5L, Linux, and Windows operating systems
- Open standards-based heterogeneous management tool
- Complements iSeries Navigator
- Integrated with PM iSeries for collecting and reporting multi-OS CPU utilization and capacity planning
- *An IBM Virtualization Engine systems service*



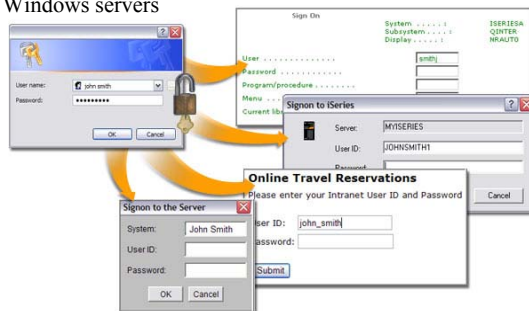
Backup Recovery Automation with BRMS

- Automate backup for i5/OS hosted Windows, Linux, AIX 5L and Domino servers
 - BRMS manages shutdown, save and restart of LPARs, Domino or Windows servers
- New reclaim media wizard condenses and reorganizes data to optimize tape utilization and save media cost
- Perform unattended system save (SAVSYS)
 - No need to start console monitor



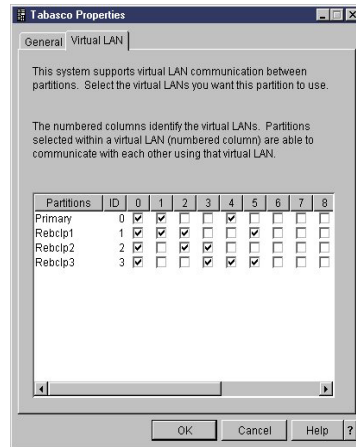
Lower Cost, More Secure Single Sign On

- i5/OS V5R3 has native Kerberos Server & KDC (Key Distribution Center)
 - Enables single sign on deployment without requiring a Windows KDC
 - Eliminates password caching in Windows servers
- i5/OS single sign on (SSO) now extended to
 - Portlets, Servlets
 - WebFaced applications
 - WebSphere Development Studio Advanced Edition



Virtual Ethernet

- **For fast, secure, reliable application communication between partitions**
- **Up to 16 high speed TCP/IP connections between partitions**
 - f Emulates 1 Gb Ethernet Adapters
 - f Selective communications paths between partitions
 - f Utilizes iSeries memory bus
 - f No additional hardware required
- **Supports communications between**
 - f OS/400 to OS/400
 - f Linux to OS/400
 - f Linux to Linux
 - f Linux to Windows
- **Included with OS/400 V5R1 and V5R2**



Linux on iSeries

Applications integration

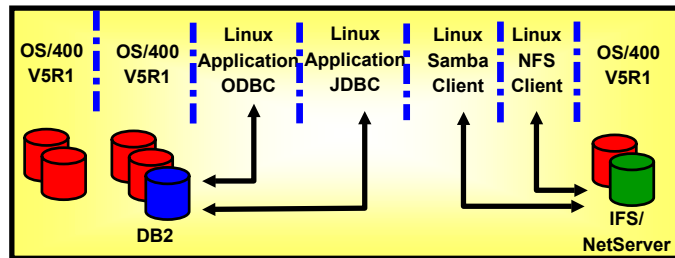
Linux and OS/400 Application Integration

Database Access

- f Linux can access DB2 UDB for OS/400
 - JDBC (IBM Toolbox for Java)
 - ODBC for DB2 UDB for OS/400

File and Print Serving

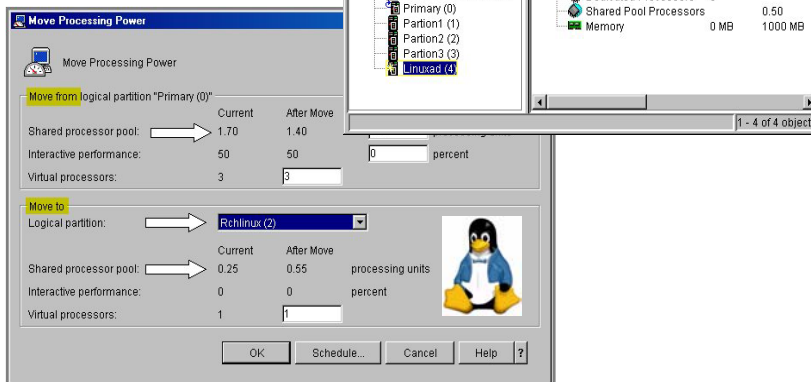
- f Linux can access OS/400 files
 - OS/400 NetServer Support for Samba
 - NFS
- f Linux can print to OS/400 printers
 - OS/400 NetServer Support for Samba



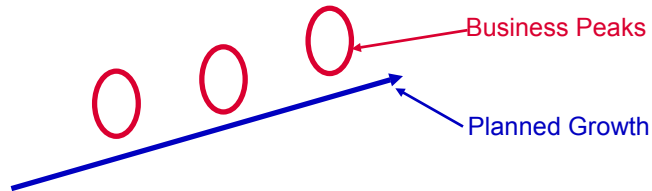
Linux Partition Management

V5R2 iSeries Navigator

- f Create Partition Wizard
- f Create, Delete Partitions
- f Move Processor Resources



Capacity Upgrade on Demand



■ Permanent

- f Planned Growth (pay when purchased, no premium)
- f Can pay for Processor Activation without an OS/400 license

■ Temporary

- f Business Peaks (pay after use, break even is ~20 days)
- ... **turn it on / off**
- f 14 bonus days included with Standard and Enterprise Packages

■ Available on i825, i870, and i890

Linux Kernel



■ Linux consists of source tree that is compiled for a specific hardware platform to generate a kernel

■ IBM has contributed modifications for the Linux PowerPC kernel

- f 2.4, 2.6, 64-bit and 32-bit Kernels
 - f Architecture Independent Code - no changes
 - f Architecture Dependent Code - some changes
 - Device drivers to direct and virtual iSeries I/O
 - Get Time of Day from iSeries
 - f These kernel modifications are Open Source
 - f These modifications are available on Linux PowerPC web sites
 - <http://linuxppc64.org/>
- These modifications now included in the Linux kernel for PowerPC



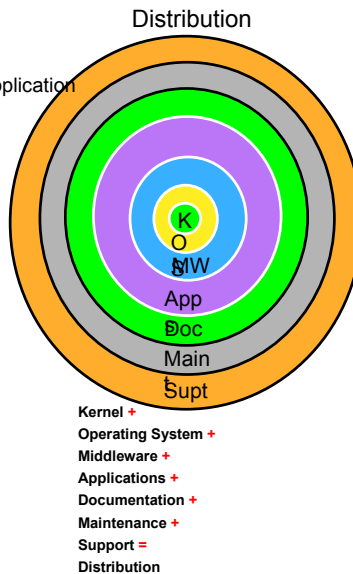
Linux Distributors

- / Use PowerPC Linux kernel
- / Add 100s of Operating System, Middleware, and Application components
- / Add iSeries integration features
- / Create Installation Documentation
- / Offer maintenance and support

Functions included in Typical Distribution

Functions	Key Middleware and Applications
Web Serving	Apache, Tomcat
Mail Server	SMTP(postfix), POP3, IMAP, Sendmail MTA
Print Server	Samba
File Server	Samba, NFS
Proxy Server	Squid
Security	NetFilter firewall, VPN, OpenSSL
Name server	DNS, DHCP, WINS, FTP
Directory	OpenLDAP
Database	MySQL, Postgres
Languages	C, C++, PHP, Pearl
Desktop	KDE, Gnome

The things that most people are using
Linux for come with the distribution



Linux Distributions for iSeries

■ SuSE

f SuSE Linux Enterprise Server 9

- 64-bit kernel (2.6), 64 and 32-bit applications
- Available August 31, 2004



■ Turbolinux

f Turbolinux Enterprise Server 8 for iSeries

- 64-bit kernel, 64 and 32-bit applications
- Available April 2003



■ Red Hat

f Red Hat Linux Enterprise 3 for POWER5 (64-bit)

- 64-bit kernel, 32-bit applications
- Available, September 30, 2004



Support for Linux on iSeries

■ Support is available for Linux on iSeries from distributors

- / SuSE
- / Turbolinux
- / Red Hat

■ Support for Linux on iSeries from IBM Global Services

- / IBM Support Line provides answers to usage questions and suspected Linux code defects (Level 1 and Level 2 Support)
- / Requires Linux SupportLine contract
- / Can purchase Linux distribution through IGS

■ Support for the Integration of iSeries, OS/400 and Linux on iSeries

- / Asking questions regarding OS/400 logical partitioning and reporting suspected defects in the OS/400 implementation of logical partitions are included within the IBM Support Line OS/400 offering contract.
- / The OS/400 Support Line representative will attempt to answer basic Linux on iSeries installation questions.

IBM Software for Linux on iSeries

WebSphere® software

- / WebSphere Application Server
- / IBM Developer Kit for Linux, Java 2
- / VisualAge C++ Compiler
- / XL FORTRAN
- / *WebSphere Commerce Suite Business Edition**

Tivoli® software

- / Tivoli Storage Management (client)
- / Tivoli Monitoring (client)
- / Tivoli Configuration Manager (client)
- / IBM Directory Server
- / *Tivoli Access Manager (client)**
- / *Tivoli Enterprise Console (client)**

DB2® Data Management Software

- / DB2 UDB V8.1

Lotus® software

* Support planned for 2004

DB2 for Linux on iSeries and pSeries

■ DB2 Universal Database 8.1

- / IBM's relational database management system for AIX, Linux, HP-UX, Sun, and Windows.
- / New support for Linux on IBM's PowerPC-based servers

■ Product Availability

- / eGA on May 30, GA on June 20, 2003
- / DB2 UDB V8.1 Workgroup Server Edition
- / DB2 UDB V8.1 Enterprise Server Edition
- / DB2 UDB V8.1 Developers Edition



■ iSeries Requirements

- / OS/400 V5R2 or V5R1
- / SuSE Linux Enterprise Server 8 for iSeries or Turbolinux Enterprise Server 8 for iSeries

■ Supports iSeries Innovations

- / Dynamic Logical Partitioning with Shared Processor Support
- / Virtual Storage Management
- / Virtual Ethernet LAN

■ Benefits of DB2 UDB on Linux

- / Provides an industry leading database management solution on Linux
- / New DB2 UDB based applications from Solution Providers
- / Leverage Linux market place: skills and OpenSource software
- / Provides DB2 Connect support to DB2 on OS/400
- / Added Flexibility for Porting
 - Oracle, SQL Server, Sybase Migration Toolkits <http://www-3.ibm.com/software/data/db2/migration/mtk/>

WebSphere for Linux on iSeries and pSeries

■ WebSphere Application Server

- / IBM's web application server for multiple platforms
- / New support for Linux on IBM's PowerPC-based servers

■ Product Availability

- / eGA July 15, GA August 11
- / WebSphere Application Server V5.0.2
- / WebSphere Application Server Network Deployment V5.0.2
- / WebSphere Application Server Enterprise V5.0.2

■ iSeries Requirements

- / OS/400 V5R2 or V5R1
- / SuSE Linux Enterprise Server 8 for iSeries or Turbolinux Enterprise Server 8 for iSeries

■ Supports iSeries Innovations

- / Dynamic Logical Partitioning
- / Shared Processor Support
- / Virtual Storage Management
- / Virtual Ethernet LAN

■ Benefits of WebSphere on Linux on iSeries

- / Provides a Linux based e-business infrastructure for transaction-based web solutions
- / New WebSphere based applications from Solution Providers
- / Supports IBM Toolbox for Java™ to access DB2 and applications on OS/400
- / Leverage Linux market place: skills and OpenSource software
- / WebSphere Application Server Enterprise support is new for iSeries

■ Enterprise Edition

- / i825, i870, i890 Enterprise Edition includes WebSphere Application Server and 1 year of support

Tivoli Storage Manager for Linux on iSeries and pSeries

■ Tivoli Storage Manager

- f IBM's backup and recovery software for multiple platforms
- f New support for Linux on IBM's PowerPC-based servers

■ Product Availability

- f GA June 27
- f Tivoli Storage Manager V5.2 client

■ How to order

- f Passport Advantage: <http://www-3.ibm.com/software/tivoli/howtobuy/>

■ iSeries Requirements

- f OS/400 V5R2 or V5R1
- f SuSE Linux Enterprise Server 8 for iSeries or Turbolinux Enterprise Server 8 for iSeries

■ Supports iSeries Innovations

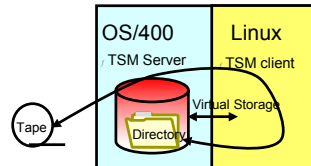
- f Dynamic Logical Partitioning
- f Shared Processor Support
- f Virtual Storage Management
- f Virtual Ethernet LAN

■ Benefits of TSM client on Linux on iSeries

- f Provides file/directory level backup for Linux
- f Centralized storage protection via TSM on OS/400
- f Leverage high speed tape drives in OS/400 partition

■ Enterprise Edition

- f i825, i870, i890 Enterprise Edition includes TSM for OS/400, 5 TSM clients and 1 year of support



Other IBM Middleware

■ Visual Age C++ V6.0

- f GA planned for August

■ XL FORTRAN 8.2

- f GA Planned for August

■ IBM Directory Server 5.1

- f Lightweight Directory Access Protocol (LDAP) identity infrastructure
- <http://www-3.ibm.com/software/tivoli/products/directory-server/>

■ Tivoli Configuration Manager

- <http://www-3.ibm.com/software/tivoli/products/config-mgr/>

■ Tivoli Monitoring

- <http://www-3.ibm.com/software/tivoli/products/monitor/>

■ IBM Developer Kit for Linux, Java 2 Technology Edition

- f IBM SDK 1.4.1 for Linux on iSeries and pSeries
- <https://www6.software.ibm.com/dl/txdk/txdk-p>

■ IBM ODBC Driver

- f iSeries ODBC Driver for Linux
- f Provides access to DB2 UDB for OS/400
- Included in SuSE and Turbolinux distributions
- <http://www.ibm.com/eserver/iseries/linux/odbc/>

■ IBM Toolbox for Java or JTOpen

- f Java classes access OS/400 services and data
- Included in SuSE and Turbolinux distributions
- Download <http://www.ibm.com/eserver/iseries/toolbox/>

Speed-start your Linux app 2003

<http://www-106.ibm.com/developerworks/offers/linux-speed-start/download-p.html>

Application Sources

Linux Distributions

- f Contain popular Open Source Applications
 - Apache, Samba, Sendmail MTA, Netfiler

Open Source Applications

- f Download and compile for PowerPC
 - Tomcat for Java Servlets and Java Server Pages
<http://java.sun.com/products/jsp/tomcat/>
 - OpenOffice - Productivity Suite www.openoffice.org

PowerPC Linux applications

- f Will run out of the box
- f iSeries, pSeries, Apple PowerBook,,,

Intel Linux applications

- f Need to be compiled for PowerPC

ISVs

- f PartnerWorld is working with ISVs to enhance iSeries application portfolio

© 2000-2003 IBM Corporation

100+ Solutions for Linux on iSeries

Infrastructure	e-Business	Industry
        	    	    

300+ More in the Pipeline

More<http://www-1.ibm.com/servers/eserver/iseries/linux/apps.html>

© 2000-2003 IBM Corporation

Linux for iSeries Scenarios

Consolidation

- f Replace Windows or Linux Infrastructure servers
- f Run multiple Linux servers in partitions

Solution Component

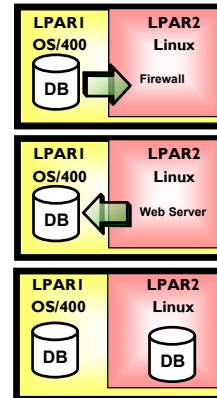
- f Linux application included with new solution
- f Run Linux application on same server as OS/400

Integration


























- f Extend OS/400 applications with Linux Applications
- f Run Linux applications on same server as OS/400

Application Flexibility

- f Leverage Linux LOB application portfolio
- f Run Linux applications on iSeries



Configuration Alternatives (there are many more)

	Line of Business	WebSphere	Firewall	Web Server	Firewall
Competitive Infrastructure	OS/400 	Intel 	Intel 	Intel 	External 
2nd iSeries for WebSphere	OS/400 	OS/400 	Intel 	Intel 	External 
2nd OS/400 Partition for WebSphere	OS/400 	OS/400 	Intel 	Intel 	External 
Multiple OS/400 Partitions and IXS	OS/400 	OS/400 	Windows - IXS 	OS/400 	External 
3 Linux Partitions (Integrated Platform)	OS/400 	Linux 	Linux 	Linux 	External 

Integrated Platform is designed to simplify a complex process: design, order, install, config, test

Can cut implementation time by 75%

Integrated Platform for e-business on iSeries

Integrated Platform Delivers

- f Blue Print (Planning and Installation Guide)
- f Installation scripts

Blue Print Configurations

- f i825 - additional 1 or 2 processors for Linux/WebSphere workloads
- f i810 - 2 way - standalone solution

Configuration Components

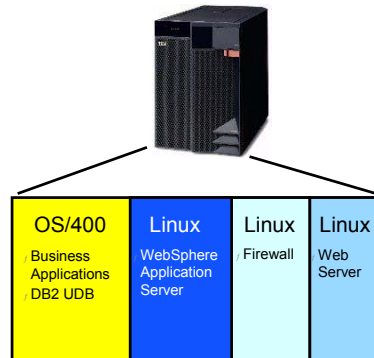
- f 3 Linux partitions for WebSphere, Firewall, and Web Server
- f Connections to OS/400 applications and data

Delivered Via Service Offerings

- f Integrated Platform Planning and Blue Print
- f Integrated Platform Implementation (optional)
- f Available starting September 8, 2003

iSeries i825, i870, i890 Enterprise Edition

- f Includes WebSphere Application Server for OS/400 or Linux
- f Services Voucher valid for Integrated Platform Service Offerings



Linux on iSeries Advantages

Run multiple Linux images on one Server

- f Up to 31 Linux partitions

Dynamic Resource Movement

- f 1/100th of a processor
- f Virtual storage spaces
- f Capacity Upgrade on Demand

Storage Virtualization

- f Linux shares resources with OS/400 and other Linux partitions: disk, tape, CD, DVD
- f Simple to duplicate servers

Virtual Ethernet for safe/fast communications

- f Up to 16 networks under the covers

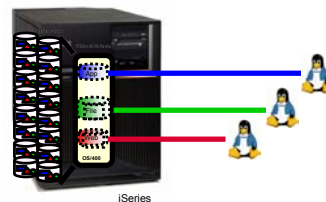
Linux to OS/400 Application Integration

- f ODBC and JDBC access to DB2/400
- f Samba and NFS for file access

Management Integration

- f LPAR and Storage

# of Processors in Server	Maximum # of Linux Partitions*
1	9
2	19
4 and >	31



iSeries Delivers ROI for Infrastructure Server Consolidation



- New IDC study finds SMBs that consolidated Intel-based infrastructure servers to iSeries using Linux or Windows achieved

- ƒ Strong costs savings
 - ƒ 90% reduction in downtime
 - ƒ 22% increase in IS Productivity
 - ƒ Payback with 1 year

Source: IDC White Paper:
The Return on Investment of Windows / Linux
Infrastructure Server Consolidation with iSeries. Case
Studies in SMBs - July 2003

3 Year ROI for Server Consolidation per 100 Users	
Cost Savings	\$542,728
Net Present Value	\$302,052
Total Investment	\$141,227
ROI (NPV/Investment)	213.9%
Payback (Investment/Yr 1 Cashflow)	216 Days

GHY International

Background:

- ƒ International customs and trade services group

Objectives:

- ƒ Handle application growth with current staff

Options

- ƒ One iSeries or 9 Intel servers

Solution

- ƒ Implemented iSeries 820 with 9 Red Hat Linux partitions

"We selected Linux on the iSeries because it was such a compelling alternative to the cost and complexity of managing nine separate Intel-based servers."

Nigel Fortlage, Vice President of IT

iSeries 820

0	GHY820 OS/400		0.50	768M
1	DOCIMG		0.20	256M
2	INTRANET		0.10	256M
3	LANAPPS Samba/DHCP/sendmail/SSH		0.50	256M
4	FIREWALL Firewall / Squid		0.20	256M
5	L2TPVPN		0.10	256M
6	IPSECVPN		0.10	256M
7	INETAPPS Sendmail Gateway/DNS/SSH		0.30	256M
8	WEBSRV		0.20	256M
9	TESTLNX		0.1	256M

Bandai France

Background

f Subsidiary of the Japanese Bandai group, one of the three world leaders in the toy market

Objective

f Secure and protect daily electronic exchanges with the parent company in Japan and partners in Asia and Europe

Solution

- f iSeries 820
- f OS/400 Financial Management solution
- f Linux based Firewall and file server
- f A second i820 provides duplicate environment



"The installation of a software Firewall under Linux in a partition on the iSeries was a safe and secure solution and was also inexpensive. I have every confidence in this platform. Its simplicity, reliability and running costs beat an NT server hands down!"

Benoit Roux, IT Director

Brenntag Nordic



Background

f Brenntag Nordic is part of Brenntag, a leading global player in the distribution of chemicals and raw materials

Objective

f Resolve problems with 49 server Windows-based network: steadily increasing administration and license payment costs and problems of keeping the uptime at an acceptable level.

Solution

- f Linux-based infrastructure applications on iSeries 825 and xSeries
- f Domino on OS/400
- f Integrated xSeries for Windows applications



"When we are finished, we will have replaced 49 Windows-based servers with iSeries and xSeries servers and as a result achieved resulting savings in administration and software licenses and even in hardware acquisition."

Michael S. Langborg, Financial Director

Hindustan Motors

■Background

- f Power Plant Division in India manufactures off-highway automatic/power-shift transmissions

■Business Need

- f Extend its ERP applications to suppliers and large international customers to streamline business processes and reduce costs

■Solution

- f iSeries Model 270
 - Red Hat Linux for email
 - OS/400 for ERP
 - WebSphere for ebusiness
 - Integrated xSeries Server for Antivirus
- f Replaced Compaq Alpha server



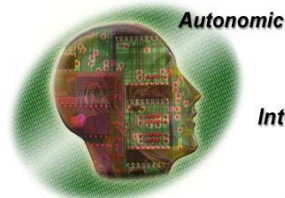
"We are committed to use the features and functionalities to the fullest, with Red Hat Linux running our mail server, Windows 2000 running the network PCs and authentication, and OS/400 running our in-house ERP, Web Application Server and HTTP environments."

S. Appan, CIO

HINDUSTAN MOTORS LIMITED - POWER PRODUCTS DIVISION



© 2000-2003 IBM Corporation



Autonomic



Integration



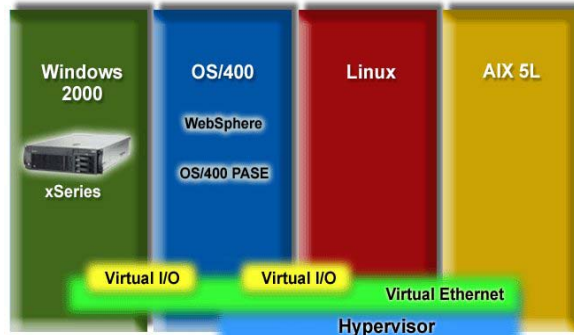
Virtualization



Open Standards

© 2000-2003 IBM Corporation

iSeries Server Consolidation



- Linux for iSeries is available from leading distributors
- iSeries offers On Demand Virtualization and Integration
- With Linux customers can consolidate their infrastructure and extend their OS/400 applications

Trademarks and Disclaimers

© Copyright International Business Machines Corporation 2001

References in this document to IBM products or services do not imply that IBM intends to make them available in every country.

The following terms are trademarks or registered trademarks of International Business Machines Corporation in the United States, other countries, or both:

AS/400	IBM Logo	zSeries
AS/400e	iSeries	pSeries
e-business logo	OS/400	eServer
IBM	xSeries	

Lotus, Freelance, and Word Pro are trademarks of Lotus Development Corporation in the United States, other countries, or both.

Tivoli and NetView are trademarks of Tivoli Systems Inc. in the United States, other countries, or both.

C-bus is a trademark of Corollary, Inc. in the United States, other countries, or both.

Java and all Java-based trademarks and logos are trademarks or registered trademarks of Sun Microsystems, Inc. in the United States, other countries, or both.

Microsoft, Windows, Windows NT, and the Windows logo are trademarks of Microsoft Corporation in the United States, other countries, or both.

PC Direct is a trademark of Ziff Communications Company in the United States, other countries, or both and is used by IBM Corporation under license.

ActionMedia, LANdesk, MMX, Pentium and ProShare are trademarks of Intel Corporation in the United States, other countries, or both.

UNIX is a registered trademark of The Open Group in the United States and other countries.

SET and the SET Logo are trademarks owned by SET Secure Electronic Transaction LLC.

Other company, product and service names may be trademarks or service marks of others.

Information is provided "AS IS" without warranty of any kind.

All customer examples described are presented as illustrations of how those customers have used IBM products and the results they may have achieved. Actual environmental costs and performance characteristics may vary by customer.

Information in this presentation concerning non-IBM products was obtained from a supplier of these products, published announcement material, or other publicly available sources and does not constitute an endorsement of such products by IBM. Sources for non-IBM list prices and performance numbers are taken from publicly available information, including vendor announcements and vendor worldwide homepages. IBM has not tested these products and cannot confirm the accuracy of performance, capability, or any other claims related to non-IBM products. Questions on the capability of non-IBM products should be addressed to the supplier of those products.

All statements regarding IBM future direction and intent are subject to change or withdrawal without notice, and represent goals and objectives only. Contact your local IBM office or IBM authorized reseller for the full text of the specific Statement of Direction.

Some information in this presentation addresses anticipated future capabilities. Such information is not intended as a definitive statement of a commitment to specific levels of performance, function or delivery schedules with respect to any future products. Such commitments are only made in IBM product announcements. The information is presented here to communicate IBM's current investment and development activities as a good faith effort to help with our customers' future planning.

Performance is based on measurements and projections using standard IBM benchmarks in a controlled environment. The actual throughput or performance that any user will experience will vary depending upon considerations such as the amount of multiprogramming in the user's job stream, the I/O configuration, the storage configuration, and the workload processed. Therefore, no assurance can be given that an individual user will achieve throughput or performance improvements equivalent to the ratios stated here.

Photographs shown are of engineering prototypes. Changes may be incorporated in production models.