



World Class Security Experts

## Laying the Foundation of OS/400 and i5/OS Security

Carol Woodbury, President and Co-Founder  
SkyView Partners  
carol.woodbury@skyviewpartners.com

© Copyright 2005 SkyView Partners LLC. All rights reserved.

[www.skyviewpartners.com](http://www.skyviewpartners.com)

## Security is about determining

### ■ What assets you want to protect

- System
- Application
- Data files
  - Credit cards
  - HR data
  - Company confidential information

### ■ Who should be accessing the asset

### ■ How you're going to protect the asset

© Copyright 2005 SkyView Partners LLC. All rights reserved.

2



[www.skyviewpartners.com](http://www.skyviewpartners.com)

## Agenda

- **Securing objects – libraries, files, etc**
- **Defining users**
- **Authority search order**
- **Adopted authority**
- **Protecting your system**
  - Security-relevant system values
  - Passwords
  - Auditing
- **IFS security**
- **For more information ...**

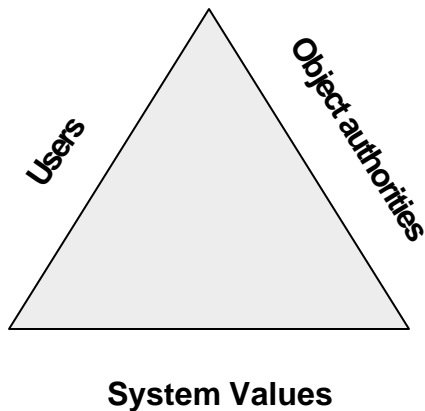
**SKYVIEW**  
PARTNERS, LLC

[www.skyviewpartners.com](http://www.skyviewpartners.com)

© Copyright 2005 SkyView Partners LLC. All rights reserved.

3

## Core of OS/400 Security



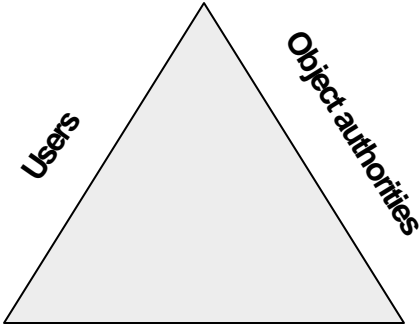
**SKYVIEW**  
PARTNERS, LLC

[www.skyviewpartners.com](http://www.skyviewpartners.com)

© Copyright 2005 SkyView Partners LLC. All rights reserved.

4

Protecting Assets



Users

Object authorities

System Values

SKYVIEW

PARTNERS, LLC

www.skyviewpartners.com

5

© Copyright 2005 SkyView Partners LLC. All rights reserved.

Protecting Assets

■ How should the asset be protected?

■ Excluded, except for authorized users

■ OK for general public access – read only

■ OK for general public access - update

SKYVIEW

PARTNERS, LLC

www.skyviewpartners.com

6

© Copyright 2005 SkyView Partners LLC. All rights reserved.

## How Do I Get Authority to Access an Object?

- **To access or use an object, you must have the authority to the object. The authority could come from:**
  - \*ALLOBJ special authority (privilege given to a user)
  - Explicit (or private) authority to the object
  - \*PUBLIC authority
    - Default access for the object
  - Authorization list
  - Adopted authority



## Authorities

<b>Object Authorities</b>	<b>*OBJOPR, *OBJMGT, *OBJEXIST, *OBJALTER, *OBJREF, *AUTLMGT</b>
<b>Data Authorities</b>	<b>*READ, *ADD, *UPD, *DLT, *EXECUTE</b>
<b>*EXCLUDE</b>	<b>Prevents access to an object</b>



## Object Authorities

<b>*OBJOPR – Object Operational</b>	Look at the description of an object and use the object as determined by the data authorities the user has.
<b>*OBJMGT – Object Management</b>	Move or rename an object or add members to database files. Superset of *OBJALTER and *OBJREF
<b>*OBJEXIST – Object Existence</b>	Change ownership and delete the object, free storage for the object, perform save and restore operations
<b>*OBJALTER – Object Alter</b>	Add, clear, initialize and reorganize members of database files, after and add attributes of database files, add and remove triggers, change attributes of SQL packages
<b>*OBJREF – Object Reference</b>	Specify database file as the parent in a referential constraint
<b>*AUTLMGT – Authorization List Management</b>	Add and remove users and their authorities from an authorization list.



© Copyright 2005 SkyView Partners LLC. All rights reserved.

9

www.skyviewpartners.com

## Data Authorities

<b>*READ</b>	Display the contents of an object, such as viewing the records in a file
<b>*ADD</b>	Add entries to an object, such as adding messages to a message queue, or records to a file
<b>*UPD (Update)</b>	Change entries in an object, such as changing records in a file
<b>*DLT (Delete)</b>	Remove entries from an object, such as removing messages from a message queue or deleting records from a file
<b>*EXECUTE</b>	Run a program or search a library or directory



© Copyright 2005 SkyView Partners LLC. All rights reserved.

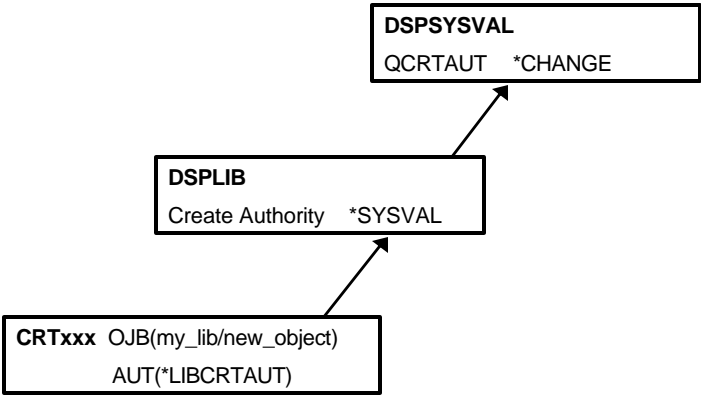
10

www.skyviewpartners.com

“Short-cut” Authorities

	*OBJOPR	*OBJMGT	*OBJEXIST	*OBJALTER	*OBJREF	*READ	*ADD	*UPD	*DLT	*EXECUTE
*ALL	X	X	X	X	X	X	X	X	X	X
*CHANGE	X					X	X	X	X	X
*USE	X					X				X
*EXCLUDE										

Where does \*PUBLIC authority come from?



## Can I Safely Change QCRTAUT?

- To change QCRTAUT to \*USE or \*EXCLUDE you must also change
  - CRTAUT value of QSYS to \*CHANGE (so you can use the \*MSGQs and \*DEVDS that get created into QSYS)
  - Default value for AUT parameter on CRTLIB from \*LIBCRTAUT to \*USE (or \*EXCLUDE)
  - No need to make these accommodations in V5R3 !!! ←
- Fixes QSYS file system. To secure directories, change the authority on the '/' root directory – QCRTAUT has no affect on the \*PUBLIC authority of directories.

© Copyright 2005 SkyView Partners LLC. All rights reserved.

13

**SKYVIEW**  
PARTNERS, LLC

www.skyviewpartners.com

## Private Authorities – “Green screen commands”

To give someone a private authority, use the GRTOBJAUT, EDTOBJAUT or CHGAUT command

```
GRTOBJAUT OBJ(AR_LIB/RCVFILE)
          OBJTYPE(*FILE)
          USER(CJWOODBURY)
          AUT(*CHANGE)
```

To remove their authority, use the RVKOBJAUT, EDTOBJAUT or CHGAUT command

```
RVKOBJAUT OBJ(AR_LIB/RCVFILE)
          OBJTYPE(*FILE)
          USER(CJWOODBURY)
          AUT(*ALL)
```

**Note:** Easiest way to manipulate column authorities through iSeries Access

© Copyright 2005 SkyView Partners LLC. All rights reserved.

14

**SKYVIEW**  
PARTNERS, LLC

www.skyviewpartners.com

## EDTOBJAUT

Edit Object Authority

Object . . . . . : APRDATA
Library . . . . . : AR\_DATA
Object type . . . . : \*FILE

Owner . . . . . : AR\_DTA\_OWN
Primary group . . . : \*NONE
ASP device . . . . . : \*SYSBAS

Type changes to current authorities, press Enter.

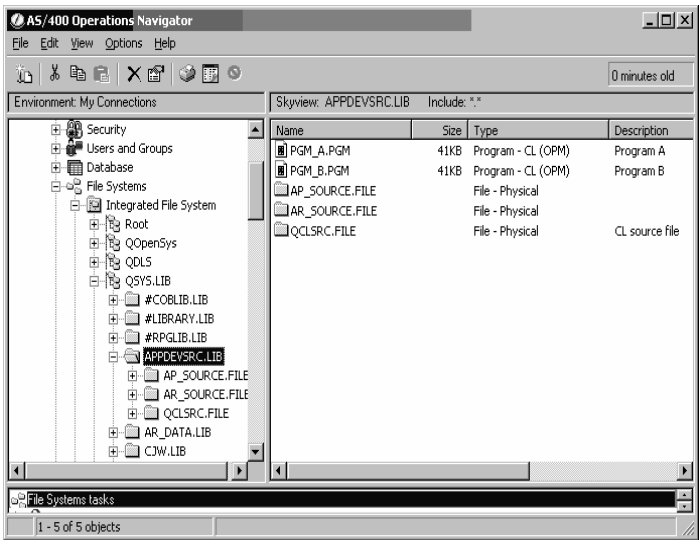
Object secured by authorization list . . . . . : AR AUTL

User	Group	Object Authority
AR_DTA_OWN		*ALL
JANETB		*EXCLUDE
ALANY		*USE
JOHNV		*CHANGE
*PUBLIC		*AUTL

Bottom

F3=Exit   F5=Refresh   F6=Add new users   F10=Grant with reference object  
F11=Display detail object authorities   F12=Cancel   F24=More keys  
Object authorities changed.

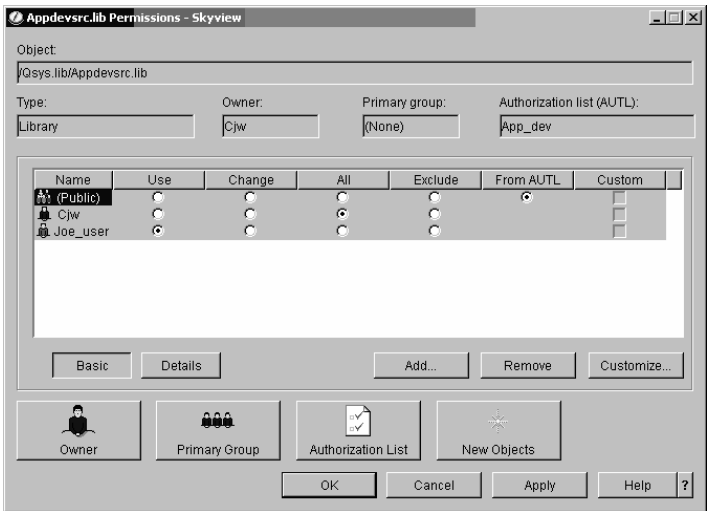
## Setting Authority on an Object



- Right click on the object name, select Permissions



## Permissions



© Copyright 2005 SkyView Partners LLC. All rights reserved.

17

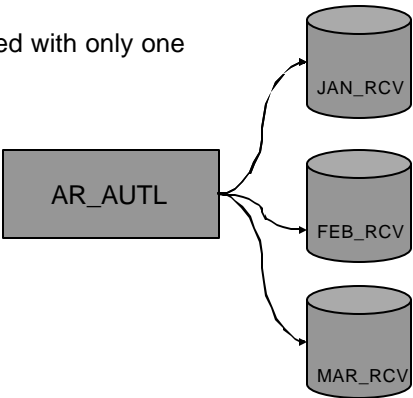
## Authorization Lists

Way to group similar objects and only have to manage authority once

An object can be secured with only one authorization list

Grant Private Authorities:

KELSEY \*USE  
TODD \*CHANGE  
ABBY \*ALL  
AVA \*USE  
\*PUBLIC(\*EXCLUDE)



© Copyright 2005 SkyView Partners LLC. All rights reserved.

18

EDTAUTL

Edit Authorization List
Object . . . . . : AR\_AUTL
Library . . . . . : QSYS
Owner . . . . . : AR\_DTA\_OWN
Primary group . . . : \*NONE
Type changes to current authorities, press Enter.

User	Object Authority	List Mgt
AR_DTA_OWN	*ALL	X
JOHNV	*USE	-
AR_APP_OWN	*CHANGE	-
GRP_ACCTNG	*USE	-
ERINT	*CHANGE	-
*PUBLIC	*EXCLUDE	-

Bottom
F3=Exit F5=Refresh F6=Add new users
F11=Display detail object authorities F12=Cancel F24=More keys
(C) COPYRIGHT IBM CORP. 1980, 2002.

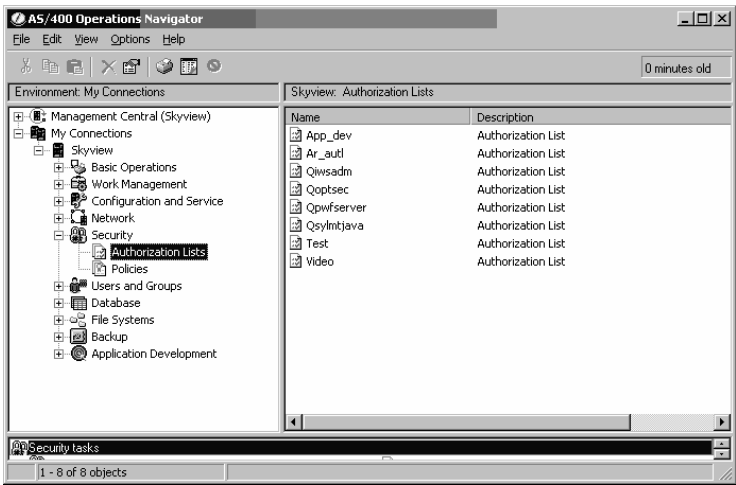
DSPAUTOBJ

Display Authorization List Objects
Authorization list . . . . . : AR\_AUTL
Library . . . . . : QSYS
Owner . . . . . : AR\_DTA\_OWN
Primary group . . . . . : \*NONE

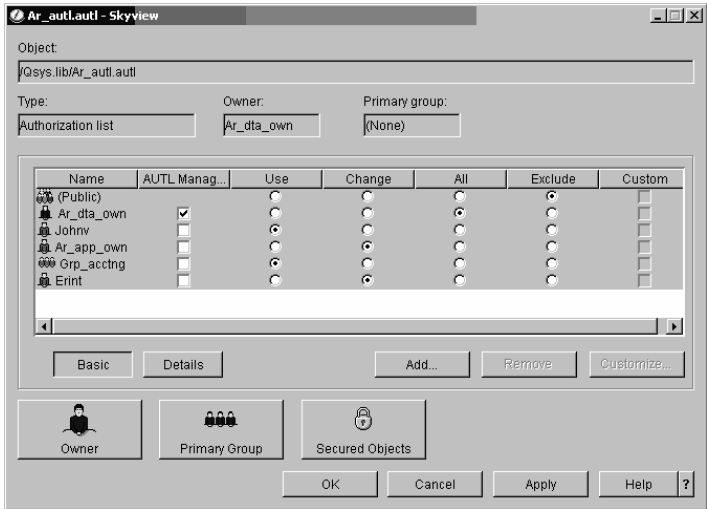
Object	Library	Type	Owner	Primary group	Text
JANDATA	AR_DATA	*FILE	AR_DTA_OWN	*NONE	
FEBDATA	AR_DATA	*FILE	AR_DTA_OWN	*NONE	
MARDATA	AR_DATA	*FILE	AR_DTA_OWN	*NONE	
APRDATA	AR_DATA	*FILE	AR_DTA_OWN	*NONE	
MAYDATA	AR_DATA	*FILE	AR_DTA_OWN	*NONE	
JUNDATA	AR_DATA	*FILE	AR_DTA_OWN	*NONE	
JULDATA	AR_DATA	*FILE	AR_DTA_OWN	*NONE	
AUGDATA	AR_DATA	*FILE	AR_DTA_OWN	*NONE	
SEPDATA	AR_DATA	*FILE	AR_DTA_OWN	*NONE	

More...
Press Enter to continue.
F3=Exit F11=Display ASP F12=Cancel F17=Top F18=Bottom
(C) COPYRIGHT IBM CORP. 1980, 2002.

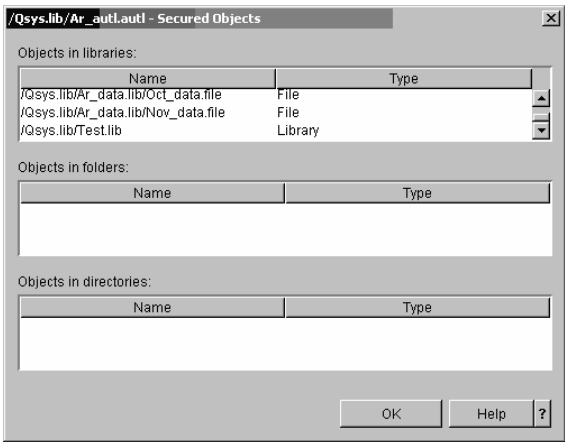
## Authorization Lists



## Authorization list authorities



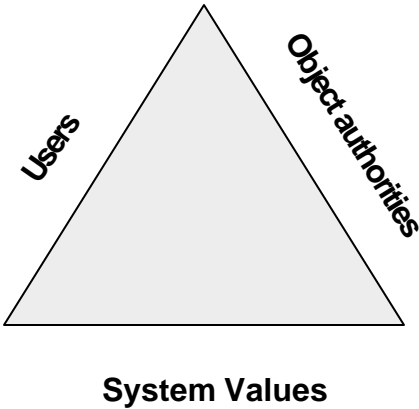
## Objects secured by the authorization list



© Copyright 2005 SkyView Partners LLC. All rights reserved.

23

## OS/400 Security Elements



© Copyright 2005 SkyView Partners LLC. All rights reserved.

24

## Defining users

- **What (types of) users should have access to the asset?**
- **What roles do you have in the organization**
  - What capabilities do they need?

## User Profile Attributes

- **User profiles define attributes of a user**
  - Security attributes
  - Group profile information
  - Signon attributes
  - Job settings
  - Network access
  - Personal (telephone book) information

CRTUSRPRF – 1

Create User Profile (CRTUSRPRF)

Type choices, press Enter.

User profile . . . . .

> NEW PROF

Name

User password . . . . .

Don't let this default to \*USRPRF

Set password to expired . . . . .

> \*YES

\*NO, \*YES

Status . . . . .

> \*ENABLED

\*ENABLED, \*DISABLED

User class . . . . .

> \*SECOFR

\*USER, \*SYSOPR, \*PGMR...

Assistance level . . . . .

> \*SYSVAL

\*SYSVAL, \*BASIC, \*INTERMED...

Current library . . . . .

> \*CRTDFT

Name, \*CRTDFT

Initial program to call . . . . .

> APP MENU

Name, \*NONE

Library . . . . .

> APP LIB

Name, \*LIBL, \*CURLIB

Initial menu . . . . .

> \*SIGNOFF

Name, \*SIGNOFF

Library . . . . .

>

Name, \*LIBL, \*CURLIB

Limit capabilities . . . . .

> \*YES

\*NO, \*PARTIAL, \*YES

Text 'description' . . . . .

> 'Add a meaningful description here'

More...

F3=Exit

F4=Prompt

F5=Refresh

F10=Additional parameters

F12=Cancel

F13=How to use this display

F24=More keys

CRTUSRPRF – 2

Create User Profile (CRTUSRPRF)

Type choices, press Enter.

Additional Parameters

Special authority . . . . .

> \*USRCLS

\*USRCLS, \*NONE, \*ALLOBJ...

+ for more values

Special environment . . . . .

> \*SYSVAL

\*SYSVAL, \*NONE, \*S36

Display sign-on information . . . . .

> \*SYSVAL

\*SYSVAL, \*NO, \*YES

Password expiration interval . . . . .

> \*SYSVAL

1-365, \*SYSVAL, \*NOMAX

Limit device sessions . . . . .

> \*SYSVAL

\*SYSVAL, \*YES, \*NO

Keyboard buffering . . . . .

> \*SYSVAL

\*SYSVAL, \*NO, \*TYPEAHEAD...

Maximum allowed storage . . . . .

> \*NOMAX

Kilobytes, \*NOMAX

Highest schedule priority . . . . .

> 3

0-9

Job description . . . . .

> APP JOB0

Name

Library . . . . .

> APP LIB

Name, \*LIBL, \*CURLIB

Group profile . . . . .

> ACCT\_GRP

Name, \*NONE

Owner . . . . .

> \*USRPRF

\*USRPRF, \*GRPPRF

More...

F3=Exit

F4=Prompt

F5=Refresh

F12=Cancel

F13=How to use this display

F24=More keys

CRTUSRPRF – 3

Create User Profile (CRTUSRPRF)

Type choices, press Enter.

Group authority . . . . .	<u>*NONE</u>	*NONE, *ALL, *CHANGE, *USE...
Group authority type . . . . .	<u>*PRIVATE</u>	*PRIVATE, *PGP
Supplemental groups . . . . .	> <u>GROUP 2</u>	Name, *NONE
	+ for more values > <u>GROUP 3</u>	
Accounting code . . . . .	> <u>1357</u>	
Document password . . . . .	<u>*NONE</u>	Name, *NONE
Message queue . . . . .	<u>*USRPRF</u>	Name, *USRPRF
Library . . . . .		Name, *LIBL, *CURLIB
Delivery . . . . .	<u>*NOTIFY</u>	*NOTIFY, *BREAK, *HOLD, *DFT
Severity code filter . . . . .	<u>0</u>	0-99
Print device . . . . .	<u>*WRKSTN</u>	Name, *WRKSTN, *SYSVAL
Output queue . . . . .	<u>*WRKSTN</u>	Name, *WRKSTN, *DEV
Library . . . . .		Name, *LIBL, *CURLIB
Attention program . . . . .	<u>*SYSVAL</u>	Name, *NONE, *SYSVAL, *ASSIST
Library . . . . .		Name, *LIBL, *CURLIB

More...

F3=Exit F4=Prompt F5=Refresh F12=Cancel F13=How to use this display  
F24=More keys

CRTUSRPRF – 4

Create User Profile (CRTUSRPRF)

Type choices, press Enter.

Group authority . . . . .	<u>*NONE</u>	*NONE, *ALL, *CHANGE, *USE...
Group authority type . . . . .	<u>*PRIVATE</u>	*PRIVATE, *PGP
Supplemental groups . . . . .	> <u>GROUP 2</u>	Name, *NONE
	+ for more values > <u>GROUP 3</u>	
Accounting code . . . . .	> <u>1357</u>	
Document password . . . . .	<u>*NONE</u>	Name, *NONE
Message queue . . . . .	<u>*USRPRF</u>	Name, *USRPRF
Library . . . . .		Name, *LIBL, *CURLIB
Delivery . . . . .	<u>*NOTIFY</u>	*NOTIFY, *BREAK, *HOLD, *DFT
Severity code filter . . . . .	<u>0</u>	0-99
Print device . . . . .	<u>*WRKSTN</u>	Name, *WRKSTN, *SYSVAL
Output queue . . . . .	<u>*WRKSTN</u>	Name, *WRKSTN, *DEV
Library . . . . .		Name, *LIBL, *CURLIB
Attention program . . . . .	<u>*SYSVAL</u>	Name, *NONE, *SYSVAL, *ASSIST
Library . . . . .		Name, *LIBL, *CURLIB

More...

F3=Exit F4=Prompt F5=Refresh F12=Cancel F13=How to use this display  
F24=More keys

CRTUSRPRF – 5

Create User Profile (CRTUSRPRF)

Type choices, press Enter.

Sort sequence . . . . .	<u>*SYSVAL</u>	Name, *SYSVAL, *HEX...
Library . . . . .		Name, *LIBL, *CURLIB
Language ID . . . . .	<u>*SYSVAL</u>	*SYSVAL...
Country or region ID . . . . .	<u>*SYSVAL</u>	*SYSVAL...
Coded character set ID . . . . .	<u>*SYSVAL</u>	*SYSVAL, *HEX...
Character identifier control . . . . .	<u>*SYSVAL</u>	*SYSVAL, *DEVD, *JOBCCSID
Locale job attributes . . . . .	<u>*SYSVAL</u>	*SYSVAL, *NONE, *CCSID...
+ for more values		
Locale . . . . .	<u>*SYSVAL</u>	

User options . . . . .	<u>*NONE</u>	*NONE, *CLKWD, *EXPERT...
+ for more values		
User ID number . . . . .	<u>*GEN</u>	1-4294967294, *GEN
Group ID number . . . . .	<u>*NONE</u>	1-4294967294, *NONE, *GEN
Home directory . . . . .	<u>*USRPRF</u>	

More...

F3=Exit  F4=Prompt  F5=Refresh  F12=Cancel  F13=How to use this display  
F24=More keys

CRTUSRPRF – 6

Create User Profile (CRTUSRPRF)

Type choices, press Enter.

Authority . . . . .	<u>*EXCLUDE</u>	*ALL, *CHANGE, *USE, *EXCLUDE
---------------------	-----------------	-------------------------------

Bottom

F3=Exit  F4=Prompt  F5=Refresh  F12=Cancel  F13=How to use this display  
F24=More keys



## New Profile Parameters – V5R3

- **Local password management (LCLPMDMGT)**
  - \*YES – password stored on local machine as it is today
  - \*NO – password set to \*NONE, then stored remotely to take advantage of single signon
    - iSeries Integration for Windows Server
- **EIM association (EIMASSOC)**
  - EIM identifier                      \*NOCHG, \*USRPRF, name
  - Association type                  \*TARGET, \*SOURCE, \*TGTSRC, \*ADMIN
  - Association action                \*REPLACE, \*ADD, \*REMOVE
  - Create EIM identifier            \*NOCRTEIMID, \*CRTEIMID
- **This enables writing a CL program to initially populate EIM**

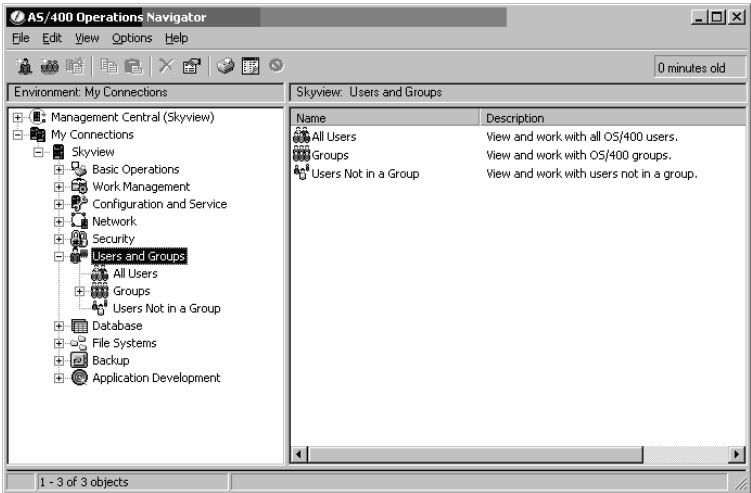


© Copyright 2005 SkyView Partners LLC. All rights reserved.

33

www.skyviewpartners.com

## Users and Groups



© Copyright 2005 SkyView Partners LLC. All rights reserved.

34

www.skyviewpartners.com

## Add a New User

**New User - Skyview**

User name: CAROLW

Description: Carol Woodbury - SkyView Partners

Password: Use user name  
Use user name  
No password (sign-on not allowed)

☒ User must change password at next sign-on

☒ Enable user for processing

Groups Personal Capabilities Jobs Networks

Add Cancel Help

- Right click on Users and Groups
- Select New User ...

**SKYVIEW**  
PARTNERS, LLC

www.skyviewpartners.com

© Copyright 2005 SkyView Partners LLC. All rights reserved.

35

## Capabilities - Privileges (Special Authorities)

**New User - Capabilities**

Privileges Applications Auditing Password Certificates Unique Identifier

Privilege class: User

System privileges:

☐ All object access ☐ Security administration

☐ Auditing control ☐ Spool control

☐ Job control ☐ System configuration

☐ Save/restore ☐ System service access

OK Cancel Help

**SKYVIEW**  
PARTNERS, LLC

www.skyviewpartners.com

© Copyright 2005 SkyView Partners LLC. All rights reserved.

36

## Special Authorities – Green screen

Specify Value for Parameter SPCAUT

Type choice, press Enter.

Special authority . . . . . \*USRCLS

Single Values

- \*USRCLS
- \*NONE

Other Values

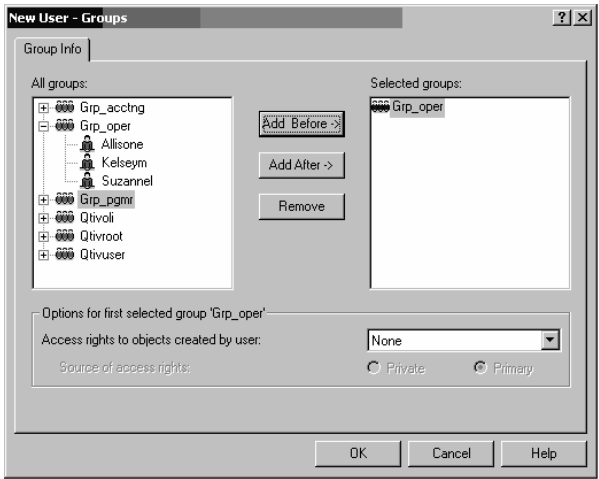
- \*ALLOBJ
- \*AUDIT
- \*IOSYSCFG
- \*JOBCTL
- \*SAVSYS
- \*SECADM
- \*SERVICE
- \*SPLCTL

F3=Exit F5=Refresh F12=Cancel F13=How to use this display F24=More keys

## Special Authorities (or Privileges in Ops Nav)

Special Authority	Definition
*AUDIT	Auditing configuration
*IOSYSCFG	Communications configuration and mgmt
*JOBCTL	Mgmt of any job on the system
*SAVSYS	Ability to save and restore any object on the system – or the entire system regardless of authority to the object
*SECADM	Create/Change/Delete user profiles
*SERVICE	Ability to use Service Tools
*SPLCTL	Access to every spooled file on the system regardless of authority to the outq
*ALLOBJ	Access to EVERY object on the system. It is not possible to prevent an *ALLOBJ user from accessing an object!!!

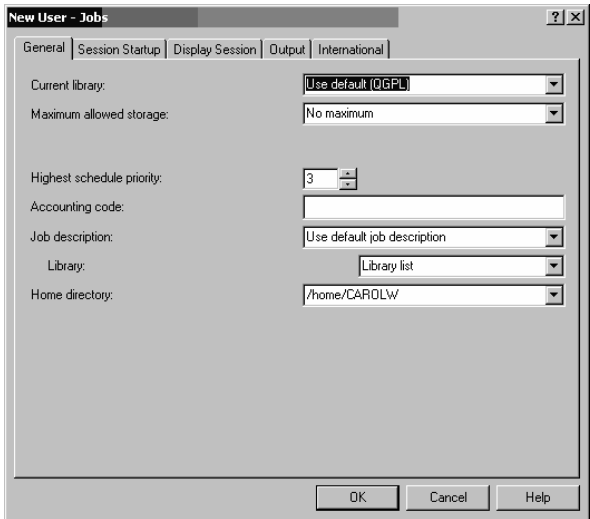
## Groups – Making a user a member of a group



© Copyright 2005 SkyView Partners LLC. All rights reserved.

39

## Jobs – Define a user's job attributes



© Copyright 2005 SkyView Partners LLC. All rights reserved.

40

Personal – Personal Information

New User - Personal

NameLocationMail

Last name:

First name:

Middle name:

Preferred name:

Full name:

Department:

Job title:

Company:

OK

Cancel

Help

ADDIRE

Add Directory Entry (ADDIRE)

Type choices, press Enter.

User identifier:

User IDCharacter value

AddressCharacter value

User description

User profileName, \*NONE

System name:

System name\*LCLCharacter value, \*LCL, \*PC...

System groupCharacter value

Network user ID\*USRID

Last name\*NONE

First name\*NONE

Middle name\*NONE

Preferred name\*NONE

F3=ExitF4=PromptF5=RefreshF10=Additional parametersF12=Cancel

F13=How to use this displayF24=More keys

More...

SKYVIEW

PARTNERS, LLC

www.skyviewpartners.com

© Copyright 2005 SkyView Partners LLC. All rights reserved.

42

Copyright SkyView Partners, 2005. All Rights Reserved.

21

## Group Profiles

- **Allows users with similar jobs to share authorities without having to share a profile**
  - Create using CRTUSRPRF or through Ops Nav
  - Choose a naming convention which makes groups easily recognizable
  - Create with PASSWORD(\*NONE)
  - Should not own objects (unless you want everyone in the group to “own” the objects)
  - Users can be a member of up to 16 group profiles. Should assign profiles in order of most frequent use.
  - Special authorities are cumulative for the user and group(s).
  - Object authorities are additive at the group level.

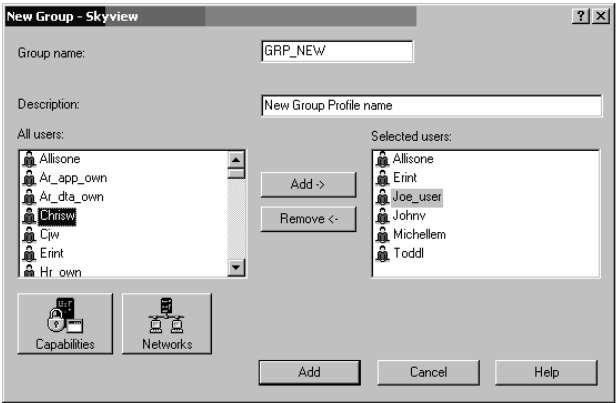


© Copyright 2005 SkyView Partners LLC. All rights reserved.

43

www.skyviewpartners.com

## Adding a Group



Right click on Users and Groups

- Select New Group ...



© Copyright 2005 SkyView Partners LLC. All rights reserved.

44

www.skyviewpartners.com

## Creating or Adding a Group

Create User Profile (CRTUSRPRF)

Type choices, press Enter.

User profile . . . . . > GRP\_NAME      Name

User password . . . . .      Set this to \*NONE

Set password to expired . . . . . \*NO              \*NO, \*YES

Status . . . . . > \*DISABLED      \*ENABLED, \*DISABLED

User class . . . . . \*USER           \*USER, \*SYSOPR, \*PGMR...

Assistance level . . . . . \*SYSVAL        \*SYSVAL, \*BASIC, \*INTERMED...

Current library . . . . . \*CRTDFT        Name, \*CRTDFT

Initial program to call . . . . \*NONE          Name, \*NONE

Library . . . . .                      Name, \*LIBL, \*CURLIB

Initial menu . . . . . MAIN            Name, \*SIGNOFF

Library . . . . . \*LIBL           Name, \*LIBL, \*CURLIB

Limit capabilities . . . . . \*NO             \*NO, \*PARTIAL, \*YES

Text 'description' . . . . . > 'Set this to a meaningful description'

F3=Exit    F4=Prompt    F5=Refresh    F10=Additional parameters    F12=Cancel

F13=How to use this display    F24=More keys

Bottom



## How do authorization lists compare with group profiles?

Authorization Lists	Group Profiles
Associates like objects	Associates like users
Secures multiples objects	Can be authorized to multiple objects
Users can be authorized to multiple authorization lists	All users in a group have the same authority to an object
Objects can be secured by only one authorization list	Many groups can have authority to one object



OS/400 Authority Search Order

<div><div>*ALLOBJ</div><div>Private</div><div>Authorization List</div></div>	USER	Stops when ANY authority is found
<div><div>*ALLOBJ</div><div>Primary Group</div><div>Private</div><div>Authorization List</div></div>	GROUP(S)	Repeats for each group until sufficient authority is accumulated or no more groups
<div><div>Object</div><div>Authorization List</div></div>	*PUBLIC	Checked when no authority is found for User or Group(s)
<div><div>Adopted</div></div>		Only checked when authority is not sufficient

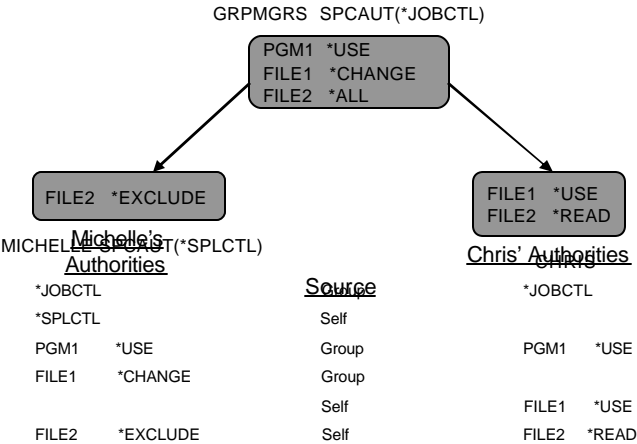


© Copyright 2005 SkyView Partners LLC. All rights reserved.

47

www.skyviewpartners.com

Authority Checking Example



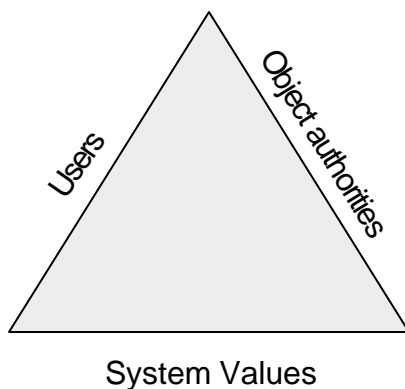
© Copyright 2005 SkyView Partners LLC. All rights reserved.

48

www.skyviewpartners.com



## One Application Security Scheme



© Copyright 2005 SkyView Partners LLC. All rights reserved.

49

**SKYVIEW**  
PARTNERS, LLC  
[www.skyviewpartners.com](http://www.skyviewpartners.com)

## Adopted Authority

- Used to temporarily give authority
- When a program with USRPRF(\*OWNER) runs, the authority in effect is the user plus the owner of the program
- Both special authorities and private authorities are adopted (the program owner's groups are not included)
- Additional authority is in effect for as long as the program is in the call stack

© Copyright 2005 SkyView Partners LLC. All rights reserved.

50

**SKYVIEW**  
PARTNERS, LLC  
[www.skyviewpartners.com](http://www.skyviewpartners.com)

## How can I tell whether a program adopts?

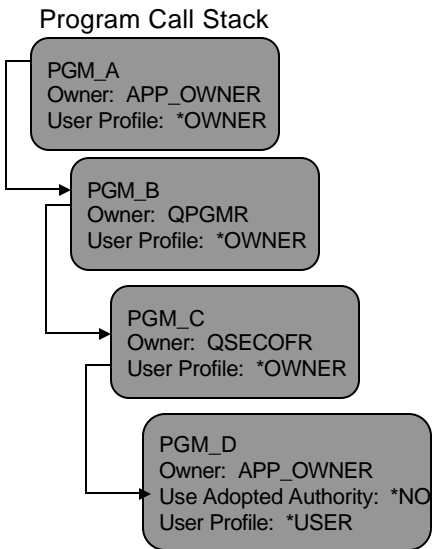
```
Display Program Information
Program . . . . . : QCMDSECOFR  Library . . . . . : CJW
Owner . . . . . : CJW
Program attribute . . : CLP

Program creation information:
Program creation date/time . . . . . : 03/29/03  14:25:25
Type of program . . . . . : OPM
Source file . . . . . : SOURCE
Library . . . . . : CJW
Source member . . . . . : QCMDSECOFR
Source file change date/time . . . . . : 03/29/03  14:25:14
Observable information . . . . . : *ALL
User profile . . . . . : *OWNER
Use adopted authority . . . . . : *YES
Log commands (CL program) . . . . . : *JOB
Allow RTVCLSRC (CL program) . . . . . : *YES
Fix decimal data . . . . . : *NO

Press Enter to continue.

F3=Exit  F12=Cancel
(C) COPYRIGHT IBM CORP. 1980, 2002.
```

## Adopted Authority Example



**Authorities in Effect**

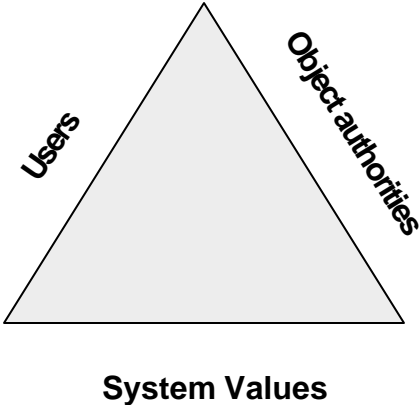
CJW then APP\_OWNER

CJW then APP\_OWNER then QPGMR

CJW then APP\_OWNER then QPGMR then QSECOFR

CJW

# Protecting Your System



# WRKSYSVAL \*SEC

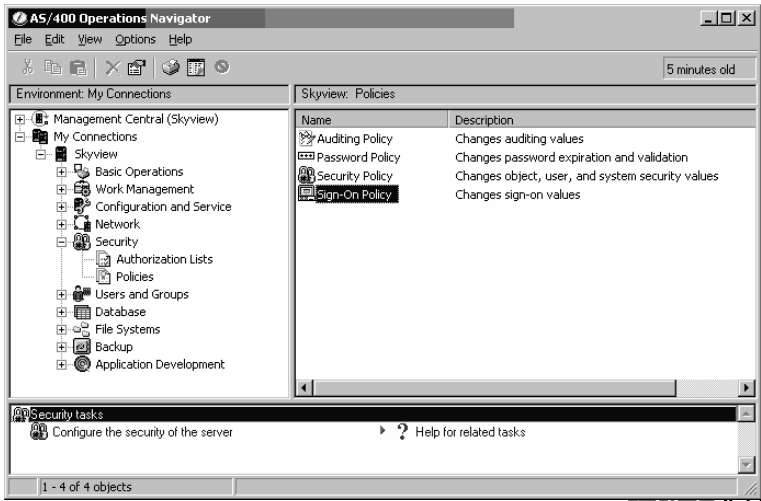
```
Work with System Values                                     System: SKYVIEW
Position to . . . . .                                     Starting characters of system value
Subset by Type . . . . . *SEC                               F4 for list

Type options, press Enter.
  2=Change  5=Display

Option  System Value  Type  Description
-      -
-      QALW0BJRST  *SEC  Allow object restore option
-      QALWUSRDMN  *SEC  Allow user domain objects in libraries
-      QAUDCTL     *SEC  Auditing control
-      QAUDENDACN  *SEC  Auditing end action
-      QAUDFRCLVL  *SEC  Force auditing data
-      QAUDLVL     *SEC  Security auditing level
-      QCRTAUT     *SEC  Create default public authority
-      QCRT0BJAUD  *SEC  Create object auditing

Command
===>
F3=Exit  F4=Prompt  F5=Refresh  F9=Retrieve  F11=Display names only
F12=Cancel
```

## Security Policies (System Values)

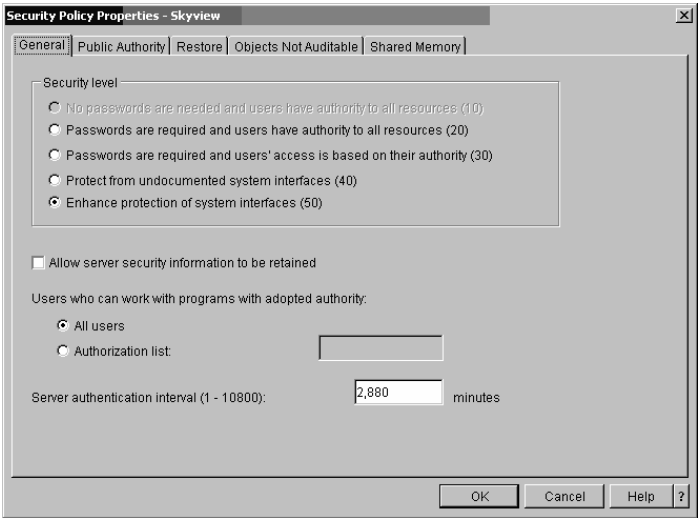


© Copyright 2005 SkyView Partners LLC. All rights reserved.

55

**SKYVIEW**  
PARTNERS, LLC  
www.skyviewpartners.com

## Security Policies - General

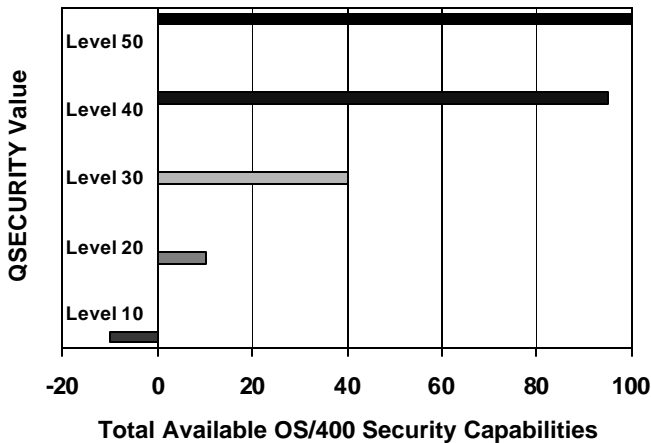


© Copyright 2005 SkyView Partners LLC. All rights reserved.

56

**SKYVIEW**  
PARTNERS, LLC  
www.skyviewpartners.com

## Security Level (QSECURITY)



© Copyright 2005 SkyView Partners LLC. All rights reserved.

57

**SKYVIEW**  
PARTNERS, LLC  
www.skyviewpartners.com

## Restore Policies

The screenshot shows the 'Security Policy Properties - Skyview' dialog box with the 'Restore' tab selected. The 'General' tab is also visible. The 'Restore' tab contains the following options:

- Allow restore of security-sensitive objects:
  - ☐ System state programs
  - ☐ Programs that adopt their owner
  - ☐ Programs that have the S\_ISUID (set-user-id) attribute enabled
  - ☐ Programs that have the S\_ISGID (set-group-id) attribute enabled
  - ☐ Programs with validation errors
- ☒ Allow restore of security-sensitive objects while installing software fixes
  - ☒ System state programs
  - ☒ Programs that adopt their owner
  - ☒ Programs that have the S\_ISUID (set-user-id) attribute enabled
  - ☒ Programs that have the S\_ISGID (set-group-id) attribute enabled
- ☒ Verify object signatures during restore
  - ☐ Allow restore of objects without signatures
  - ☒ Allow restore of objects with signatures that are not valid

Buttons: OK, Cancel, Help, ?

© Copyright 2005 SkyView Partners LLC. All rights reserved.

58

**SKYVIEW**  
PARTNERS, LLC  
www.skyviewpartners.com

WRKSYSVAL QPWD\*

Work with System Values

System: SKYVIEW

Position to . . . . . Starting characters of system value

Subset by Type . . . . . F4 for list

Type options, press Enter.

2=Change 5=Display

Option	System Value	Type	Description
—	QPWDEXPITY	*SEC	Password expiration interval
—	QPWDLMTAJC	*SEC	Limit adjacent digits in password
—	QPWDLMTCHR	*SEC	Limit characters in password
—	QPWDLMTREP	*SEC	Limit repeating characters in password
—	QPWDLVL	*SEC	Password level
—	QPWDMAXLEN	*SEC	Maximum password length
—	QPWDMINLEN	*SEC	Minimum password length
—	QPWDPOSDIF	*SEC	Limit password character positions

More...

Command

===>

F3=Exit F4=Prompt F5=Refresh F9=Retrieve F11=Display names only

F12=Cancel

Password System Values

Password Policy Properties - Skyview

General Validation Expiration

Password level (current):

Short passwords using a limited character set. (0)

Password lengths

Minimum length (1 - 10): 6

Maximum length (1 - 10): 8

Password characters

☒ Require at least one digit

☒ Restrict consecutive digits

Restricted characters: A,E,I,O,U,@,\$,#

Restrict repeating characters:

Characters may not be used consecutively

Previous passwords

Password re-use cycle: After 32 passwords

☒ Require a new character in each position

After 1 password

After 4 passwords

After 6 passwords

After 8 passwords

After 10 passwords

Cancel Help ?

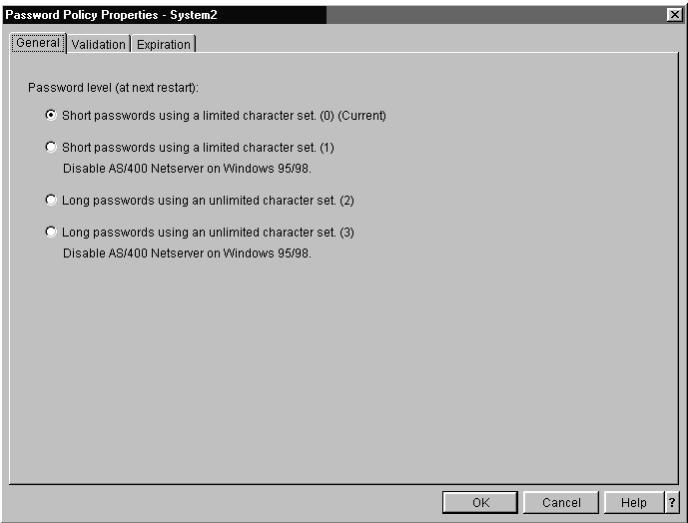
# Password Recommendations

## Should

- be at least seven characters long
- contain a number
- be changed regularly – more frequently for “powerful” profiles
- not be known to administrators
- not be shared

**Don't make creating a password so difficult users are forced to write them down !!!**

# Password Level



## Password Level (QPWDLVL) – New in V5R1

Value	Effect
0	Works as it did prior to V5R1 - Default
1	Gets rid of NetServer password
2	Enables new composition rules – keeps NetServer password, encrypts with old and new algorithms
3	Enables new composition rules – gets rid of old encrypted password and NetServer password

•Requires an IPL and V5R1

•See pending value on DSPSECA

© Copyright 2005 SkyView Partners LLC. All rights reserved.

**SKYVIEW**  
PARTNERS, LLC

www.skyviewpartners.com

## Sign on Policies - General

**Sign-on Policy Properties - Skyview**

General | Remote

Incorrect sign-on attempts

☐ No maximum

☒ Maximum number: 3

When maximum is reached:

- Disable user and device
- Disable device
- Disable user
- Disable user and device

☒ Display sign-on information

☐ Restrict privileged users to specific devices

☐ Limit each user to one device session

OK Cancel Help ?

© Copyright 2005 SkyView Partners LLC. All rights reserved.

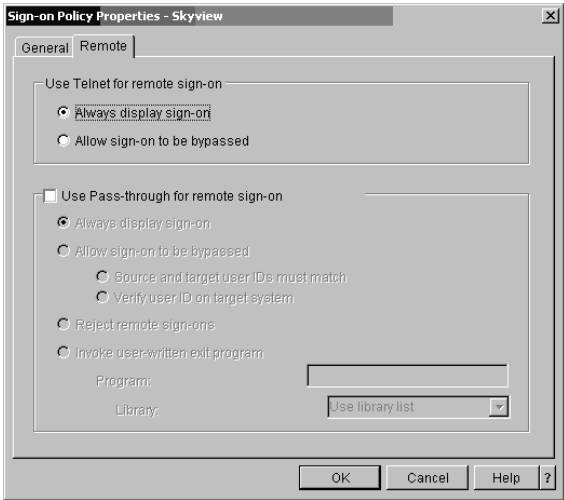
64

**SKYVIEW**  
PARTNERS, LLC

www.skyviewpartners.com



## Sign on Policies - Remote

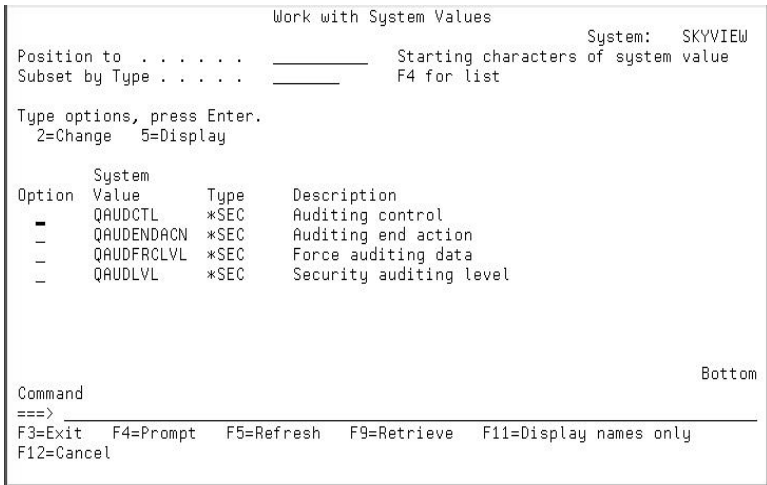


© Copyright 2005 SkyView Partners LLC. All rights reserved.

65

**SKYVIEW**  
PARTNERS, LLC  
www.skyviewpartners.com

## Auditing System Values

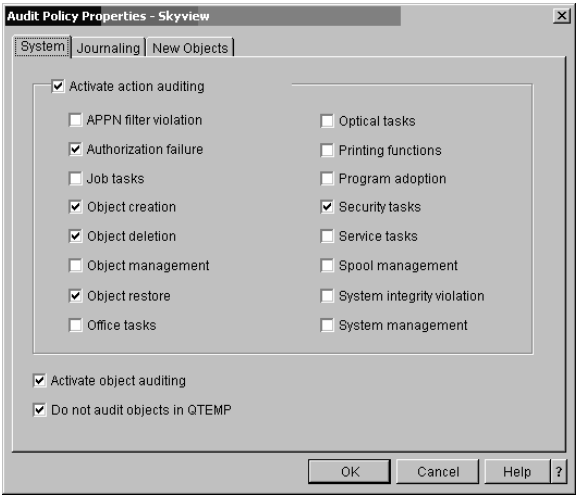


© Copyright 2005 SkyView Partners LLC. All rights reserved.

66

**SKYVIEW**  
PARTNERS, LLC  
www.skyviewpartners.com

# Auditing System Values



© Copyright 2005 SkyView Partners LLC. All rights reserved.

67

# Recommended Audit Settings

- **QAUDCTL**
  - \*OBJAUD
  - \*AUDLVL
  - \*NOQTEMP
- **QAUDLVL**
  - \*AUTFAIL
  - \*SECURITY
  - \*CREATE
  - \*DELETE
  - \*SAVRST
  - \*SERVICE
  - \*PGMFAIL (only if running QSECURITY < 40)

© Copyright 2005 SkyView Partners LLC. All rights reserved.

68

## New Auditing Values in V5R3

- **QAUDLVL**
  - \*SECURITY is subsetting into
    - \*SECCFG – user profile, system value changes, network attributes, etc
    - \*SECDSRV – directory services
    - \*SECIPC – interprocess communications
    - \*SECNAS – network authentication ticket verification (Kerberos)
    - \*SECRUN – runtime changes of object ownership, authorization list, etc
    - \*SECCKD – secure socket descriptors
    - \*SECVFY – verification of profile handles and tokens
    - \*SECVLDL – usage of validation list entries
  - \*NETCMN is subsetting into
    - \*NETBAS – basic network events – SSL connections, APPN “firewall” activities
    - \*NETCLU – cluster resource groups
    - \*NETFAIL – security -related network failures – e.g., secure socket port not available
    - \*NETSCK – mail filtered, mail rejected, give and take socket descriptors
  - \*AUDLVL2 (must be specified or QAUDLVL2 is ignored)
- **QAUDLVL2 (overflow for QAUDLVL)**
- **Subsetting values only available at the system value level (not user)**
- **Recommend values -- \*SECCFG, \*SECRUN**

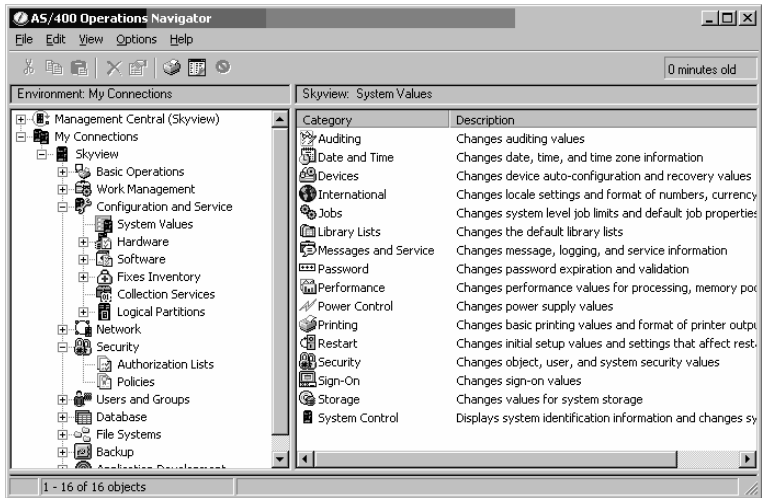


© Copyright 2005 SkyView Partners LLC. All rights reserved.

69

www.skyviewpartners.com

## Other System Values



© Copyright 2005 SkyView Partners LLC. All rights reserved.

70

www.skyviewpartners.com

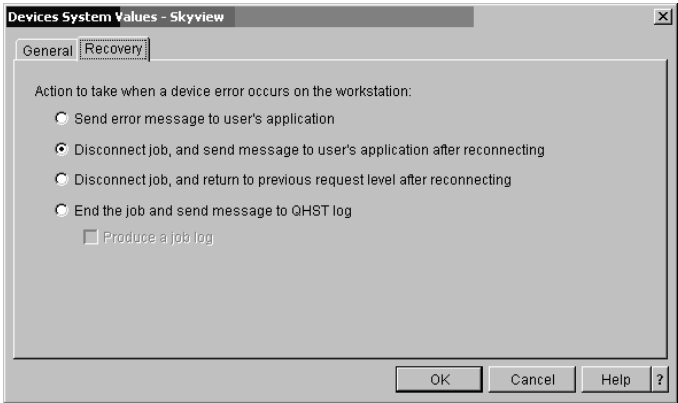
## Device System Values - General



© Copyright 2005 SkyView Partners LLC. All rights reserved.

71

## Device System Values - Recovery



© Copyright 2005 SkyView Partners LLC. All rights reserved.

72

## Job System Values - Interactive

© Copyright 2005 SkyView Partners LLC. All rights reserved.

73

**SKYVIEW**  
PARTNERS, LLC  
www.skyviewpartners.com

## New IFS System Values and Exit Points – V5R3

### ■ QSCANFS – Scan file system

- \*NONE or \*ROOTUPOD – every stream file in '/', QOpenSys and user-defined file systems are scanned
- Works together the QIBM\_QPOL\_SCAN\_OPEN (Scan on Open) and QIBM\_QPOL\_SCAN\_CLOSE (Scan on Close) exit points to define what program does the scanning.
  - Documented in the API section of the Info Center.

### ■ QSCANFCTL – Scan file system control parameters

- Determines which objects and when objects within a file system are scanned (for example – scan only when the object is changed.)
- Determines the action to take when the scan fails.
- Works together with new attributes on \*DIR (\*CRTOBJSCAN) and \*STMF (\*SCAN)

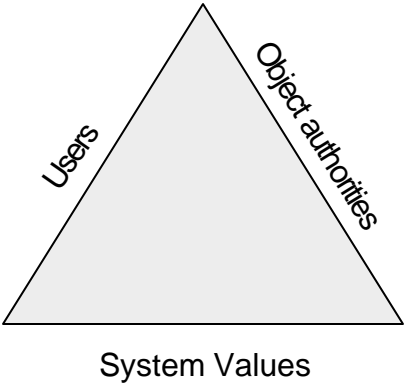
**Enable real-time virus scanning!**

© Copyright 2005 SkyView Partners LLC. All rights reserved.

74

**SKYVIEW**  
PARTNERS, LLC  
www.skyviewpartners.com

## IFS Security Scheme



## IFS Authorities

Authorities	*RWX	*RW	*RX	*R	*WX	*W	*X
<b>Object</b>					*RWX = Read/Write/Execute (*CHANGE)		
*OBJMGT					*RW = Read/Write		
*OBJEXIST					*RX = Read/Execute (*USE)		
*OBJALTER					*R = Read		
*OBJREF					*WX = Write/Execute		
*AUTLMGT					*W = Write		
<b>Data</b>					*X = Execute		
*OBJOPR	X	X	X	X	X	X	X
*READ	X	X	X	X			
*ADD	X	X			X	X	
*UPD	X	X			X	X	
*DLT	X	X					
*EXECUTE	X		X		X		X

WRKAUT ‘/’

Work with Authority

Object . . . . . : /

Owner . . . . . : QSYS

Primary group . . . . . : \*NONE

Authorization list . . . . . : AUTL

Type options, press Enter.

1=Add user    2=Change user authority    4=Remove user

Opt	User	Data Authority	--Object Authorities--
			Exist Mgt Alter Ref
-	*PUBLIC	*X	
-	QSYS	*RWX	X X X X

Parameters or command

====>

F3=Exit    F4=Prompt    F5=Refresh    F9=Retrieve

F11=Display detail data authorities    F12=Cancel    F24=More keys

(C) COPYRIGHT IBM CORP. 1980, 2002.

Bottom

Working with File System Permissions in Ops Nav

Root Permissions - Skyview

Object: /

Type: Directory    Owner: Qsys    Primary group: (None)    Authorization list (AUTL): (None)

Name	Read	Write	Execute	Manage	Existence	Alter	Referen...	Exclude	From A...
(Public)	<input checked="" type="checkbox"/>	<input checked="" type="checkbox"/>	<input checked="" type="checkbox"/>	<input checked="" type="checkbox"/>	<input checked="" type="checkbox"/>	<input checked="" type="checkbox"/>	<input checked="" type="checkbox"/>	<input type="checkbox"/>	<input type="checkbox"/>
Qsys	<input checked="" type="checkbox"/>	<input checked="" type="checkbox"/>	<input checked="" type="checkbox"/>	<input checked="" type="checkbox"/>	<input checked="" type="checkbox"/>	<input checked="" type="checkbox"/>	<input checked="" type="checkbox"/>	<input type="checkbox"/>	<input type="checkbox"/>

Add...    Remove    Customize...

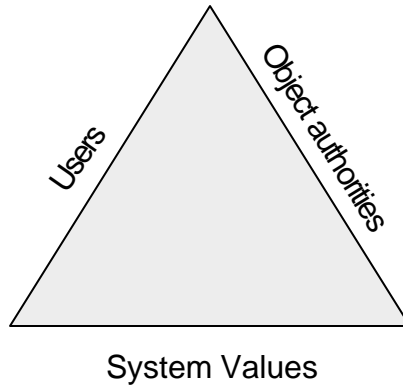
Owner

Primary Group

Authorization List

OK    Cancel    Apply    Help    ?

## Need More Information !!!



© Copyright 2005 SkyView Partners LLC. All rights reserved.

79

**SKYVIEW**  
PARTNERS, LLC  
www.skyviewpartners.com

## IBM InfoCenter

### ■ [www.iseries.ibm.com/infocenter](http://www.iseries.ibm.com/infocenter)

- Basic Security - topics
- iSeries Security Reference - PDF
  - Chapter 2 – moving between security levels
  - Chapter 6 – securing output
  - Chapter 9 – auditing
  - Appendix D – authorities required
  - Appendix F – auditing model outfiles
- Tips and Tools for Securing your iSeries - PDF

© Copyright 2004 SkyView Partners LLC. All rights reserved.

80

**SKYVIEW**  
PARTNERS, LLC  
www.skyviewpartners.com



# Security Reference

Bookmarks

Thumbnails

Comments

Signatures

Contents

Figures

Tables

About Security - Reference (SC41-5302)

Summary of Changes

Chapter 1. Introduction to iSeries Security

Chapter 2. Using System Security (QSecurity) System Values

Chapter 3. Security System Values

Chapter 4. User Profiles

Chapter 5. Resource Security

Chapter 6. Work Management Security

Chapter 7. Designing Security

Chapter 8. Backup and Recovery of Security Information

Chapter 9. Auditing Security on the iSeries System

Appendix A. Security Commands

Appendix B. IBM-Supplied User Profiles

Appendix C. Commands Shipped with Public Authority\*Exclude

Appendix D. Authority Required for Objects Used by Commands

Assumptions

General Rules for Object Authorities on Commands

Commands Common for Most Objects

Authorities Needed

Appendix E. Object Operations and Auditing

Appendix F. Layout of Audit Journal Entries

Appendix G. Commands and Menus for Security Commands

Appendix H. Notices

Bibliography

Index

IBM  
@server  
iSeries  
Security Reference  
Version 5  
SC41-5302-06

SKYVIEW  
PARTNERS, LLC  
www.skyviewpartners.com

# Tips and Tools

Bookmarks

Thumbnails

Comments

Signatures

Contents

Figures

Tables

About Tips and Tools for Securing your iSeries (SC41-5300-06)

Part 1. What's new for V5R2

Chapter 1. iSeries security enhancements

Part 2. Basic iSeries security

Chapter 2. Basic elements of iSeries security

Chapter 3. iSeries Security Wizard and Security Advisor

Chapter 4. Control interactive sign-on

Chapter 5. Configure the iSeries to use Security Tools

Part 3. Advanced iSeries security

Chapter 6. Protect information assets with object authority

Chapter 7. Manage authority

Chapter 8. Use logical partitions security (LPAR)

Chapter 9. iSeries Operations Console

Chapter 10. Detect suspicious programs

Chapter 11. Prevent and detect hacking attempts

Part 4. Applications and network communications

Chapter 12. Use Integrated File System to secure files

Chapter 13. Secure APPC communications

Chapter 14. Secure TCP/IP communications

Chapter 15. Secure workstation access

Chapter 16. Security exit programs

Chapter 17. Security considerations for Internet browsers

Chapter 18. Related information

IBM  
@server  
iSeries  
Tips and Tools  
for Securing Your iSeries  
Version 5  
SC41-5300-06

SKYVIEW  
PARTNERS, LLC  
www.skyviewpartners.com

## Want Security Information

### General information

- [www.infosecurymag.com](http://www.infosecurymag.com) (Security magazine and weekly alerts)
- [www.securitypipeline.com](http://www.securitypipeline.com) (Security magazine and weekly alerts)
- [www.gocsi.com](http://www.gocsi.com) (Interesting security surveys)
- [www.sans.org](http://www.sans.org) (Security education)
- [www.cert.org](http://www.cert.org) (Security vulnerabilities and alerts)
- [www.cisecurity.org](http://www.cisecurity.org) (Best practices – independent org)

### U.S. Government info

- [www.nist.gov/public\\_affairs/standards.htm#Information](http://www.nist.gov/public_affairs/standards.htm#Information) (Security standards)
- [www.ftc.gov/ftc/news.htm](http://www.ftc.gov/ftc/news.htm) (Federal Trade Commission)
- [www.cybercrime.gov](http://www.cybercrime.gov) (Laws, regulations, issues)

### OS/400 information

- [www.mcpressonline.com](http://www.mcpressonline.com)
  - Security Patrol
- [www.search400.com](http://www.search400.com)
  - Security expert section



© Copyright 2004 SkyView Partners LLC. All rights reserved.

83

[www.skyviewpartners.com](http://www.skyviewpartners.com)

## Checking for CERT Advisories

<https://app-06.www.ibm.com/servers/resourceLink/hom03010.nsf?OpenDatabase>

Address <https://app-06.www.ibm.com/servers/resourceLink/hom03010.nsf?OpenDatabase>

Google

**IBM** United States

Home | Products & services | Support & downloads | My account

→ Select a country

**Security Alerts**

The content of this website represents information starting from 2003 forward. For information regarding earlier alerts contact [servsec@us.ibm.com](mailto:servsec@us.ibm.com)

If you are a zSeries customer, please contact [servsec@us.ibm.com](mailto:servsec@us.ibm.com) for instructions on obtaining access to the zSeries data.

CA-2003-01 Buffer Overflows in ISC DHCPD Minires Library  
• [AIK](#) • [os/400](#) • [xSeries](#)

CA-2003-02 Double-Free Bug in CVS Server  
• [AIK](#) • [os/400](#) • [xSeries](#)

CA-2003-03 Buffer Overflow in Windows Locator Service  
• [AIK](#) • [os/400](#) • [xSeries](#)

CA-2003-04 MS-SQL Server Worm  
• [AIK](#) • [os/400](#) • [xSeries](#)

CA-2003-05 Multiple Vulnerabilities in Oracle Servers  
• [AIK](#) • [os/400](#) • [xSeries](#) • [AIK](#) • [os/400](#) • [xSeries](#)

- Register
- Click on “Problem Solving”
- Click on “Security Alerts” under Alerts heading



© Copyright 2004 SkyView Partners LLC. All rights reserved.

84

[www.skyviewpartners.com](http://www.skyviewpartners.com)

## For More Information

- **Basic Security – iSeries Infocenter**
  - [www.iseries.ibm.com/infocenter](http://www.iseries.ibm.com/infocenter)
- **iSeries Security Reference, SC41-5302**
- **Tips and Tools for Securing Your iSeries, SC41-5300**
- **Experts' Guide to OS/400 and i5/OS Security** by Carol Woodbury and Patrick Botz, ISBN 1-58304-096-X, 29th Street Press 2004.
- **[www.skyviewpartners.com](http://www.skyviewpartners.com) provides**
  - SkyView Risk Assessor for OS/400 and i5/OS software and
  - On-site security assessments providing
    - An explanation of security issues
    - Roadmap for fixing top issues
  - General security consulting
  - Remediation services



## Trademarks

- **iSeries, AS/400, IBM, i5/OS and OS/400 are trademarks of the IBM Corporation in the United States or other countries or both.**
- **Other company, product, and service names may be trademarks or service marks of others.**