




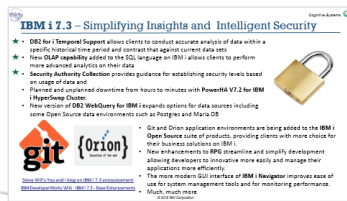
IBM i 7.3 TR4 Overview COMMON Luxembourg 30th IBM i Anniversary

[IBM i 7.3 TR4 Announcement Letter](#)



Cognitive Systems 

Fabian Michel
@Fabian_Michel
fabian_michel@be.ibm.com
Client Systems Architect
IBM Belgium



<https://ibmi30.mybluemix.net/public/>


[Products](#) ▾

[Services](#) ▾

[Industries](#)
[Developers](#) ▾

[Support](#)
[Careers](#)
[Marketplace](#)


IBM i 30th Anniversary



Happy 30th Anniversary!

At IBM, we value and appreciate your trust in running your business on IBM i. We are inspired by how IBM i clients in 117 countries are creating innovative solutions and extending the reach of the system.

It is an honor to have you as our clients, our partners, and in many cases, our friends. Please enjoy some of the amazing stories of our customers, who are pushing the IBM i platform in new and innovative ways.

Thank you,



Alison Butterill
IBM i Offering Manager



Steve Will
IBM i Chief Architect

<https://ibmi30.mybluemix.net/public/>

See innovation at work in the IBM i community



Ibnsina Pharma:

Handling rapid growth and increased transactional volume with IBM i

[Read the customer story →](#)



Deknudd Frames:

Building the framework for a thriving e-commerce operation with IBM i

[Read the customer story →](#)



Slaturfelag Suourlands:

Reducing food waste and much more with web services built on IBM i

[Read the customer story →](#)



Computer Merchants:

Driving automation, machine learning and analytics with IBM i

[Read the customer story →](#)



JORI:

Giving customers design power with IBM i and Watson

[Read the customer story →](#)



Umoe Restaurants:

Serving up smarter systems

[Read the customer story →](#)

Agenda

IBM i 7.3 TR4 Wiki

- ☐ **General OS & Roadmap**
 - ☐ New Installation Process for LIC Using USB
- ☐ **Hardware**
 - ☐ Platform
 - ☐ I/O
 - ☐ Functional Enhancements
- ☐ **Application Development**
 - ☐ Rational Development Studio for i
 - ☐ IBM i Integrated Web Services Server
 - ☐ IBM i Integrated Web Services Client
 - ☐ Compile CL from IFS Source
 - ☐ ARCAD Converter for i
 - ☐ ARCAD Observer for i
- ☐ **Systems Management**
 - ☐ IBM i Access Client Solutions
- ☐ **IBM Products**
 - ☐ IBM Domino 9.0.1 FP10



IBM i 7.3 TR 4 Highlights*

[IBM i 7.3 TR4 Wiki](#)

Support for POWER9 Scale-Out Servers

- Support for native and VIOS configurations for new IBM S914 and IBM S924 servers with POWER9 technology
- Support for native and VIOS configurations for new IBM H924 server with POWER9 technology
- Support for VIOS configurations for new IBM S922 server with POWER9 technology
- Support for VIOS configurations for new IBM H922 server with POWER9 technology

Install Options Expanded

- Extensions to the new installation process for LIC using USB 3.0 media

Expanding the Secure-ability of IBM i

- IBM i Integrated Web Services adds advanced features to help administrators and programmers leverage APIs in a more secure environment

Increasing Productivity of Developers & Administrators

- CL commands can be stored in the IFS with full edit and compile capability
- New RPG IV Operation (DATA-INTO) allows programmers to parse structured data in most formats into an RPG variable.
- IBM i Access Client Solutions continues to be enhanced to meet the needs of our IBM i user community

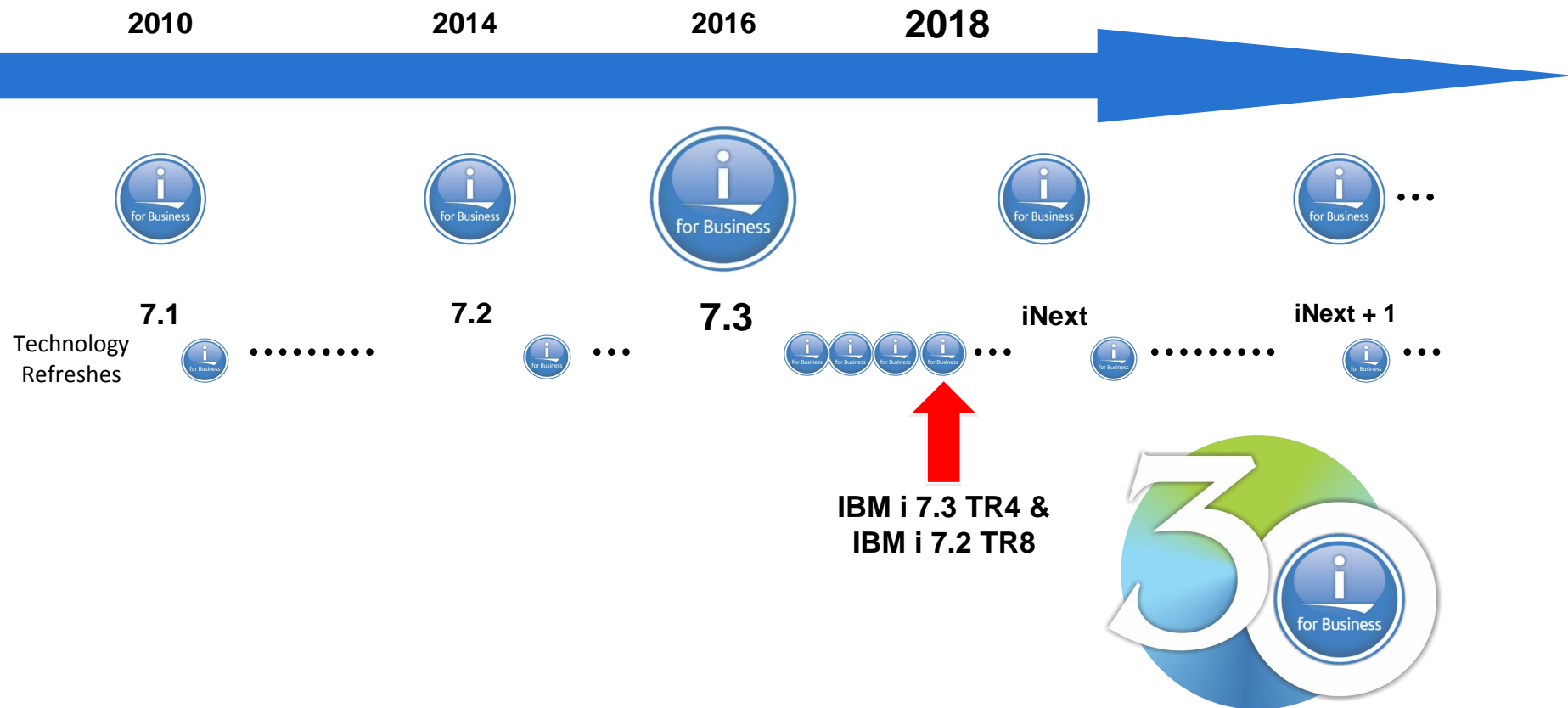
IBM Software Currency

- IBM Notes/Domino 901 Feature pack 10 (including IBM Traveler) providing security enhancements delivered for IBM i



* Some selected functions are also available in IBM i 7.2 TR8

IBM i Roadmap





IBM i v7.1 has been out of support for...

02 07 33 54

days

hours

min

sec

What to Do

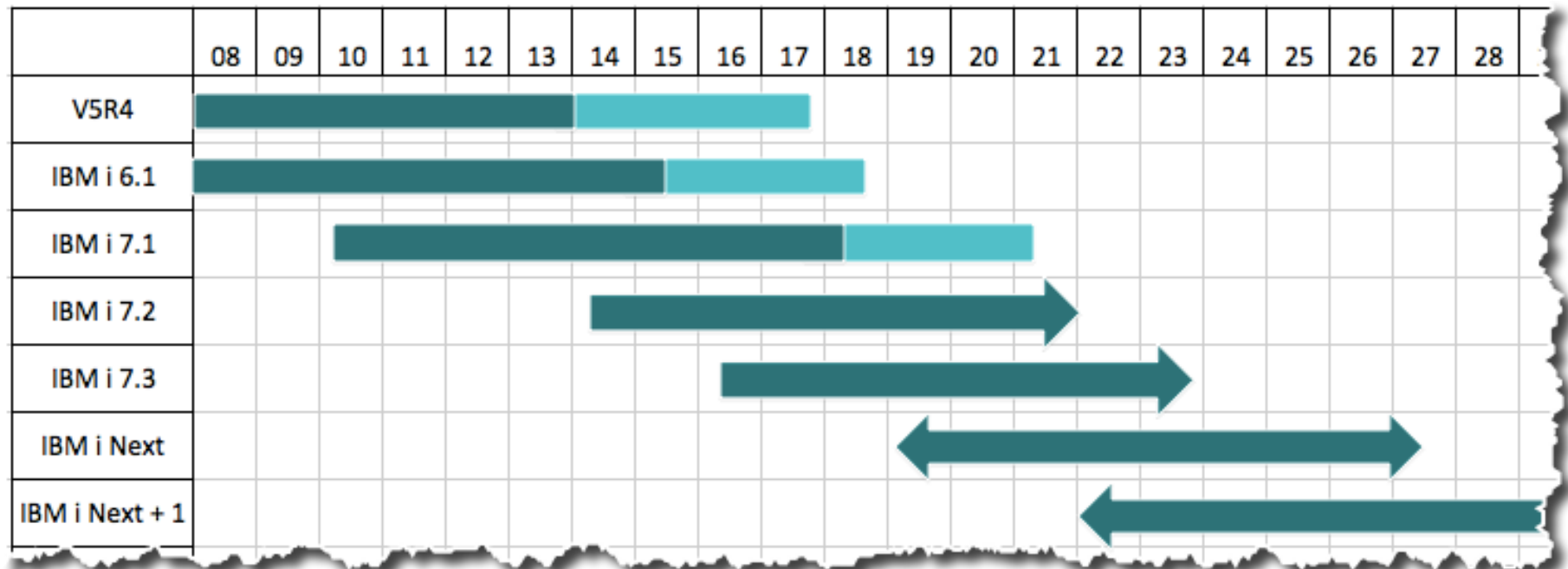
[Reasons to Upgrade](#)

[More Reasons](#)

Don't worry, you can still upgrade to IBM i 7.2 or better yet IBM i 7.3!

- Download a new, supported version of IBM i from the [IBM ESS website](#).
- Check out what's new for IBM i 7.3 [here](#).
- Read the [IBM i 7.3 Memo To Users](#).
- Read the official [7.1 withdrawal announcement](#) from IBM.

IBM i Support Roadmap



April 4/18

** All statements regarding IBM's future direction and intent are subject to change or withdrawal without notice, and represent goals and objectives only.

** Arrows indicate "ongoing status and do not imply any specific dates."

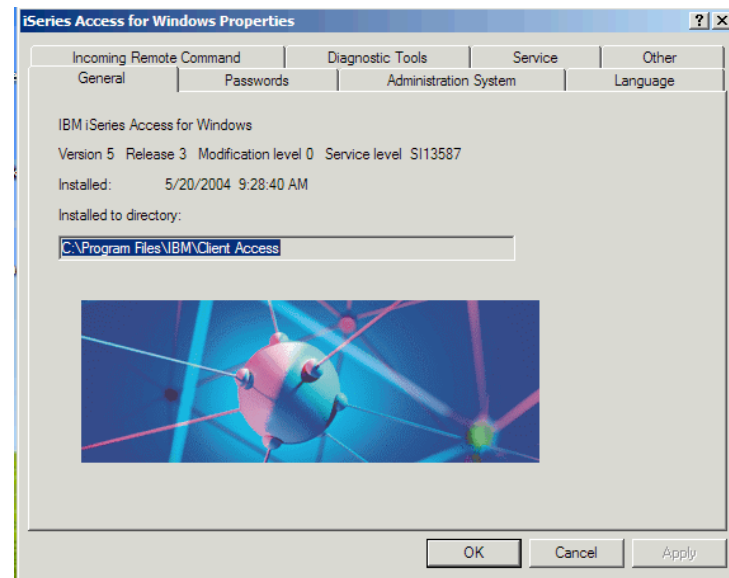
Reminder – EoS Dates for Older Hardware Models

Type	Model		EOS date	SW tier
9408	M25	POWER6 - 520	12/31/16	P10
9407	515	POWER5 - 515	12/31/19	P05
8203	E4A	POWER6 - 520	3/31/19	P10
9409	M50	POWER6 - 550	3/31/19	P20
8231	E1C/D	POWER7 - 710	9/30/19	P05
8202	E4B/C	POWER7 - 720	9/30/19	P10
8205	E6B/C	POWER7 - 740	9/30/19	P20
9406	525	POWER5 - 520	12/31/21	P10
9405	520	POWER5 - 520	12/31/21	P10
9406	520	POWER5 - 520	12/31/21	P10
9406	550	POWER5 - 550	12/31/21	P20

IBM i Access for Windows

- Latest Windows OS supported is Windows 8
- Imbeds old technology
 - PCOMM for 5250 emulation
- ➔ • Plans for withdrawal: April 2018
 - Withdraw from service, effective April 30, 2019
- Strategic Direction
 - [IBM i Access Client Solutions \(ACS\)](#)
 - Runs on multiple environments

I encourage you to move to ACS!



IBM Advanced Function Printing (AFP) Utilities for i (5770-AF1) Adjusted Plan

- Advanced Function Printing Utilities for i (5770-AF1) 7.1 and 7.2 were **withdrawn from marketing (effective July 11, 2016) and withdrawn from service (effective September 30, 2017)**. 5770-AF1 was not announced with IBM i 7.3.
- For clients who need 5770-AF1 on IBM i 7.2 and/or 7.3 and are not yet able to migrate to a third party product, **5770-AF1 7.2 is available on an unsupported, non-warranted basis for IBM i 7.2 and 7.3**. 5770-AF1 7.2 installs on either IBM i 7.2 or 7.3.
- IBM delivered **5770-AF1 7.2 PTF SI66476** to turn off the license/key checking for 5770-AF1 7.2. Install PTF on IBM i 7.2 or 7.3.
- How to acquire 5770-AF1 7.2:
 - Download from the Entitled Systems Support (ESS) web site (<http://www.ibm.com/servers/eserver/ess>) under the menu “IBM i evaluation and NLV download”: 5770-AF1 is located under IBM i 5770-SS1 7.2 on the image B_GROUPx_04. (5770-AF1 7.2 is not available to download under IBM i 7.3, only under IBM i 7.2.)
 - Clients with physical media for IBM i 7.2 will still find 5770-AF1 on the 5770-SS1 keyed stamped media set B_GROUPx_04.



IBM i Firmware Updates

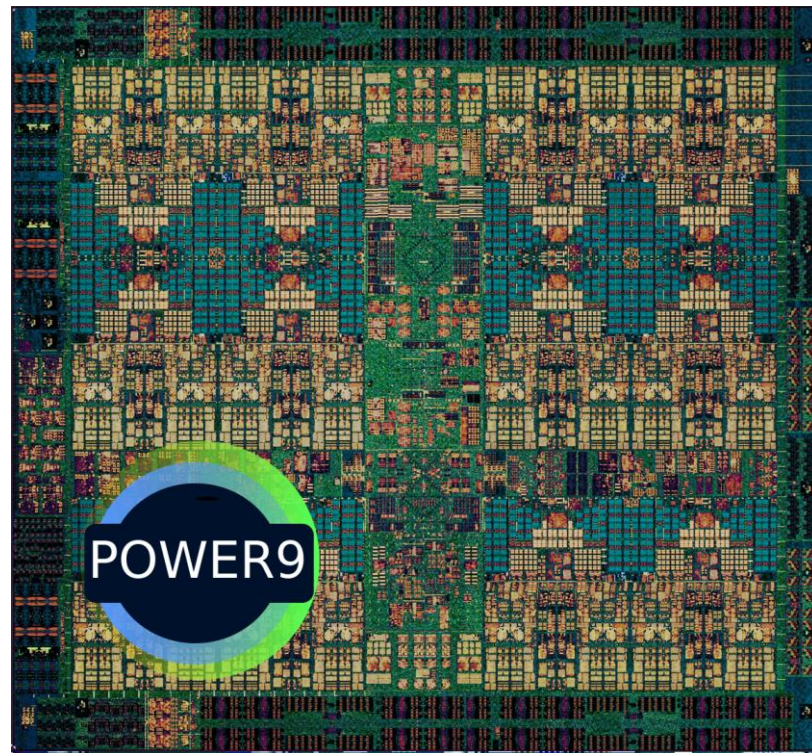
IBM i System Support

<http://www-01.ibm.com/support/docview.wss?uid=ssm1platformibmi>

Systems	IBM i 7.2	IBM i 7.3
POWER9 (7.2 TR8 & 7.3 TR4)	✓	✓
POWER8 S812, S814, S822 (VIOS only), S824, E870, E870C, E880, E880C	✓	✓
POWER7/7+ Servers Power 710, 720, 730, 740, 750, 760, 770, 780, 795	✓	✓
POWER7/7+ Blades and Compute Nodes PS700/701/702/730/704, PureFlex p260/460	✓	
POWER6+ 520, 550, 560, JS23/43 POWER6 520, 550, 570, 595, JS12/22	✓ 1	

Hardware

- IBM Power S914 model 9009-41A - IBM i native and VIOS configurations
- IBM Power S922 model 9009-22A - **IBM i configurations only with VIOS**
- IBM Power S924 model 9009-42A - IBM i native and VIOS configurations
- IBM Power H922 model 9009-22H - **IBM i configurations only with VIOS**
- IBM Power H924 model 9223-42H - IBM i native and VIOS configurations
- **Simplified D-mode IPL for systems with POWER9 technology**
- **IBM PowerVM 2.2.6**
- **IBM HMC Virtual Appliance Version 9**



POWER9 Scale Out family



L922 9008-22L	S922 9009-22A	S914 9009-41A	S924 9009-42A	H922 9223-22H	H924 9223-42H
<ul style="list-style-type: none"> • 1,2-socket, 2U • 8,10,12 cores/skt • 32 IS DIMM slots • 4TB memory • 4 CAPI 2.0 Slots <ul style="list-style-type: none"> • Linux only • PowerVM • KVM (GA2) 	<ul style="list-style-type: none"> • 1,2-socket, 2U • 4, 8,10 cores/skt • 32 IS DIMM slots • 4TB memory • 4 CAPI 2.0 Slots <ul style="list-style-type: none"> • AIX, IBM i, & Linux • PowerVM 	<ul style="list-style-type: none"> • 1-socket, 4U & Tower • 4,6,8 cores/skt • 16 IS DIMM slots • 1TB memory • 2 CAPI 2.0 Slots • Internal RDX Media <ul style="list-style-type: none"> • AIX, IBM i, Linux • PowerVM 	<ul style="list-style-type: none"> • 2-socket, 4U • 8,10,12 cores/skt • 32 IS DIMM slots • 4TB memory • 4 CAPI 2.0 slots • Internal RDX Media <ul style="list-style-type: none"> • AIX, IBM i, Linux • PowerVM 	<ul style="list-style-type: none"> • 1,2-socket, 2U • 4, 8,10 cores/skt • 32 IS DIMM slots • 4TB memory • 4 CAPI 2.0 Slots <ul style="list-style-type: none"> • AIX, IBM i up to 25% • Linux • PowerVM 	<ul style="list-style-type: none"> • 2-socket, 4U • 8,10,12 cores/skt • 32 IS DIMM slots • 4TB memory • 4 CAPI 2.0 slots • Internal RDX Media <ul style="list-style-type: none"> • AIX, IBM i up to 25% • Linux • PowerVM
Technology Leadership	<ul style="list-style-type: none"> • Cloud enabled - Embedded virtualization capabilities with PowerVM • Up to 4TB in 2 socket - DDR4 Industry Standard memory RDIMMs • High Speed 25Gb/s external ports – one per socket • 2 Internal NVMe Flash boot adapters • Embedded Analytics and Algorithms on the chip help run POWER9 at an always optimized frequency 				

IBM Power Systems Performance Report

IBM POWER SYSTEM CPW PERFORMANCE DATA: POWER8 vs. POWER9 ScaleOut Models

Data Comparison done by @Richie_Palma

Description		POWER8					POWER9					Net Increase		
Model	Cores	Model	Cores	GHz	CPW	CPW/ Core	Model	Cores	GHz	CPW	CPW/ Core	CPW Total	CPW/ Core	% Increase
S_14	4	S814	4	3.02	37,440	9,360	S914	4	2.3 – 3.8	52,500	13,125	15,060	3,765	40.2%
S_14	6	S814	6	3.02	56,400	9,400	S914	6	2.3 – 3.8	78,500	13,083	22,100	3,683	39.2%
S_14	8	S814	8	3.72	81,050	10,131	S914	8	2.8 – 3.8	122,500	15,313	41,450	5,181	51.1%
S_22	4	S822	4	4.15	49,960	12,490	S922	4	3.4 – 3.9	68,000	17,000	18,040	4,510	36.1%
S_22	4	S822	4	3.42	42,470	10,618	S922	4	2.9 – 3.8	60,000	15,000	17,530	4,383	41.3%
S_24	6	S824	6	3.89	68,250	11,375	No Comparable Make/Model					No Comparable Make/Model		
S_24	8	S824	8	4.15	89,580	11,198	S924	8	3.8 – 4.0	145,500	18,188	55,920	6,990	62.4%
S_24	10	No Comparable Make/Model					S924	10	3.5 – 3.9	174,500	17,450	No Comparable Make/Model		
S_24	12	S824	12	3.89	123,240	10,270	No Comparable Make/Model					No Comparable Make/Model		
S_24	16	S824	16	4.15	164,470	10,279	S924	16	3.8 – 4.0	268,500	16,781	104,030	6,502	63.3%
S_24	20	No Comparable Make/Model					S924	20	3.5 – 3.9	318,000	15,900	No Comparable Make/Model		
S_24	24	S824	24	3.52	218,510	9,105	S924	24	3.4 – 3.9	370,700	15,446	152,190	6,341	69.6%

+36%



+70%

Performance data pulled from "IBM Power Systems Performance Report" released on 2/27/2018.

https://www-01.ibm.com/common/ssi/cgi-bin/ssialias?infotype=PM&subtype=RG&apname=STGE_PO_PO_USEN&htmlfid=POO03017USEN&attachment=POO03017USEN.PDF

POWER8 CPW before & after Spectre vulnerability patch

IBM PSIRT blog for Security Information:
<https://www.ibm.com/security/secure-engineering/process.html>

IBM i Support Website :
[Security Bulletin: IBM i has released PTFs in response to the vulnerabilities known as Spectre and Meltdown](#)

		POWER8		
		CPW before Spectre	CPW after Spectre	% +/-
Model	no of cores			
S814	4	39500	37440	-5%
	6	59500	56400	-5%
	8	85500	81050	-5%
S824	6	72000	68250	-5%
	8	94500	89580	-5%
	12	130000	123240	-5%
	16	173500	164470	-5%
	24	230500	218510	-5%

New Installation Process for IBM i

IBM i 7.3 TR3 & IBM i 7.2 TR7



Current installation process using USB (introduced Oct 2017):

- ESS has LIC media image (I_BASE_01.IMG) for use with POWER8 USB 3.0 adapter and USB Removable Mass Storage
- Also has IBM-supplied program which can be downloaded to a PC
 - Use it to copy bootable LIC media image to USB Flash Drive
 - On a managed system, point to USB adapter and do D-mode IPL to use USB Flash drive to install LIC
 - On an unmanaged system, use DVD image to D-mode IPL to DST, then use “Define alternate installation device” option to select the USB device to install LIC
 - Note: The D-mode device and alternate install device must have the same LIC version/modification level when installing Licensed Internal Code.
 - Can also stack OS and any desired LPPs that fit on the USB Flash Drive

Future enhancements:

- Can copy image to RDX media, stack OS and desired LPPs, and use it for D-mode IPL
- IBM-supplied program for copying image will have a GUI
- Requires new copy of IBM-supplied program, but can use previous Tech Refresh levels

New Installation Process for IBM i

IBM i 7.3 TR3 & IBM i 7.2 TR7

My Entitled Systems Support

My entitled software

Software updates

Software downloads

IBM i evaluation and NLV
download

Entitlements

Servers > My entitled software > Software downloads >

Software downloads

The software available for download is based on all active entitlements associated with all customer numbers registered under your profile. Check [Help](#) for a list of supported products.

Step 1: Select your operating system type and version

Operating System:

Version:

Step 2: Select the software you wish to download

Product Number

Product Name



5770-SS1

IBM i

07.03.00

[hide/show](#)



5973: USB Lic Mach Cde Flash Image
v07.03.00,ENU,ESD

2296



Z125-5468-06 License Agreement for Ma
chine Code

3



Utility for bootable Licensed Machine Cod
e USB

1



USB I_BASE_01_Licensed_Machine_Code
_RS_730-D

2292

Bootable LIC USB Utility for IBM i ©Copyright IBM Corp. 2017, 2018 v1...

USB Imaging Options

LIC Image:

Browse

USB Device:

Refresh

Progress: 66.12% 7.13 mB/s

Cancel

Select an Option



!!!WARNING!!! Continuing will overwrite the existing contents of the disk:

Vendor/Model: Generic Flash Disk USB Device

Disk: \\PhysicalDrive1

Size: 14.65 GB

Are you sure you wish to continue?:

Yes

No

Devices with Removable Storage (1)



I_BASE_USB (D:)

Removable Disk

14.3 GB

12.2 GB

- **PCIe3 2-port 24/10 GbE IOA**
- **PCIe3 2-port 10 GbE IOA**
- **PCIe3 2-port 100 GbE IOA** adds Native and Native SR-IOV
- **PCIe3 32Gb 2-port Fibre Channel Adapter**
- **PCIe3 16Gb 4-port Fibre Channel Adapter**
- **387 GB / 775 GB / 1.55 TB SAS 5xx and 4k SFF-2 and SFF-3 Enterprise SAS SSDs**

I/O – 100 GbE

IBM i 7.3 TR4 only



Previously:

- **#EC3M, #EC3L** - PCIe3 2-port 100 GbE QSFP28 Adapter x16
 - Provided 100 Gb/s Ethernet connectivity
 - Supported only in IBM i configurations with VIOS

“Now”:

- **#EC3M, #EC3L** - Adds Native dedicated NIC support
 - **Permanent restriction:** No support for network boot & network install
 - POWER8 only

IBM FlashSystems Performance Benefit

IBM i 7.3 TR4 & IBM i 7.2 TR8

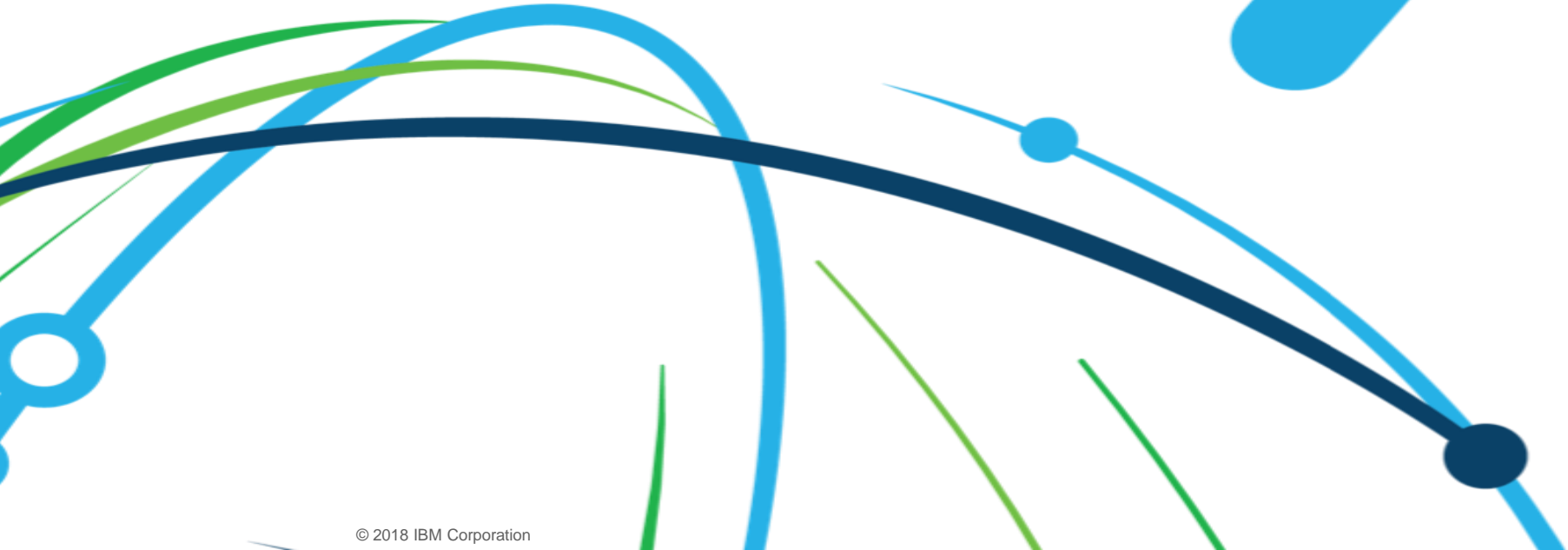


Potential performance benefit for some configurations with FlashSystems

- IBM i now uses **Unmap function in FlashSystem**
- Can particularly be **beneficial at disk initialization time**



Application Development Updates



RPG IV - A Modern Business Language

- Interoperability
 - XML
 - SQL
 - **JSON**
- Readability
 - Free form
 - No 8-80 restriction
- Functionality
 - New Built In Functions
 - Integrates with GIT
 - Source in IFS
- Modern Tools
 - RD i, RTC, ARCAD Power Pack

```
ctl-opt bnmdir('ACCRCV');
dcl-f custfile usage(*update);
dcl-ds custDs likerec(custRec);
dcl-f report printer;

read custfile custDs;
dow not %eof;
    if dueDate > %date(); // overdue?
        sendOverdueNotice();
        write reportFmt;
        exec sql insert :name, :duedate into
            mylib/myfile;
    endif;
    read custfile custDs;
enddo;
*inlr = '1';

dcl-proc sendOverdueNotice;
    sendInvoice (custDs : %date());
end-proc;
```


Parsing Data – Before

RPG

- XML-INTO
 - Take an XML document and parse it into an RPG Variable

Database

- XML_Table
 - Take a XML document and parse it into a relational DB table
- JSON_Table
 - Take a JSON document and parse it into a relational DB Table

Parsing Data – Today

RPG

- XML-INTO
 - Take an XML document and parse it into an RPG Variable
- **Data-INTO**
 - **Parse a 'Data document' into an RPG Variable**
 - **JSON**
 - **Property file**
 - **CSV, Others ??**

Database

- XML_Table
 - Take a XML document and parse it into a relational DB table
- JSON_Table
 - Take a JSON document and parse it into a relational DB Table

7.2 & 7.3 PTF: New opcode DATA-INTO

7.2 and 7.3

```
dcl-ds order qualified;
  id varchar(25);
  quantity int(10);
  price packed(6 : 2);
end-ds;
```

```
data-into order
  %data('ord1234.json' : 'doc=file case=any')
  %parser('MYSRVPGM(myJsonparser)');
```

Combines the ideas of XML-INTO and Open Access....

7.2 & 7.3 PTF: DATA-INTO

The DATA-INTO operation is similar to the XML-INTO operation

- It imports the data from a document into a data structure

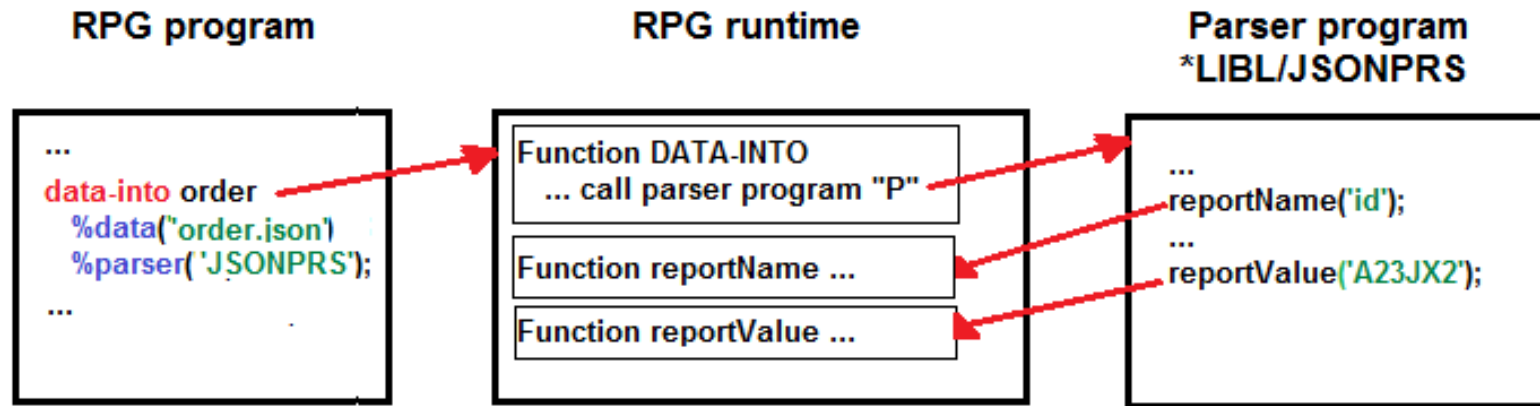
It is different from XML-INTO in the following important ways:

- It can process **any** type of hierarchical information
 - A JSON document
 - A properties file
 - A comma-separated file
 - ...
- Customers, ISV, and others can provide their own parsing program

7.2 & 7.3 PTF: DATA-INTO

RPG program calls the RPG runtime function that processes the DATA-INTO operation

- DATA-INTO passes the document to the parser program or procedure
 - The parser gradually reports the data in the document
- DATA-INTO uses the information from the parser to assign the data to the target variable



7.2 & 7.3 PTF: The DATA-INTO parser

To use DATA-INTO, you must have a *parser* that can parse the information in the document.

The parser calls special functions to report the names and values in the document.

```
{ "order" :
  { "id" : "A23JX2",
    "quantity" : 4,
    "price" : 9.75
  }
}
```

Here is what the parser reports:

- Name: "order"
- Start a structure
- Name: "id"
- Value: "A23JX2"
- Name: "quantity"
- Value: "4"
- Name: "price"
- Value: "9.75"
- End the structure

7.2 & 7.3 PTF: The DATA-INTO parser

The DATA-INTO operation takes the information reported by the parser and assigns it to the target variable.

Parser:	DATA-INTO:
<ul style="list-style-type: none"> • Name: "order" • Start a structure • Name: "id" • Value: "A23JX2" • Name: "quantity" • Value: "4" • Name: "price" • Value: "9.75" • End the structure 	<ul style="list-style-type: none"> • Work with DS "order" • Put "A23JX2" into subf "id" • Put "4" into subf "quantity" • Put "9.75" into subf "price"

7.2 & 7.3 PTF: DATA-INTO

- IBM will supply the source for a **sample** JSON parser which you can use as-is or modify
- IBM will also supply some simple parsers for "properties" documents to illustrate aspects of writing a parser
 - A "properties" document looks like this:

```
country=Canada  
city=Toronto  
Company=ABC Electronics
```

Great article on this can be found at [IBM Systems Mag.](#)

Web Exclusive

XML-INTO meets Open Access With RPG's New DATA-INTO

February 2018 | by Jon and Susan

Update

This article is to introduce you to the latest addition to the RPG     Print 1

First Step to Modern RPG

Fixed
Format
RPG



Free
and
Modern
RPG

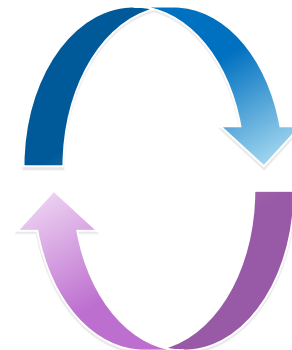
How Do I Convert to Modern RPG ??

New Updates!!!

ARCAD Converter

ARCAD Converter for i - 5733-AC1

- Plugs into RDi
- Identification of truncation issues – Warnings or Auto



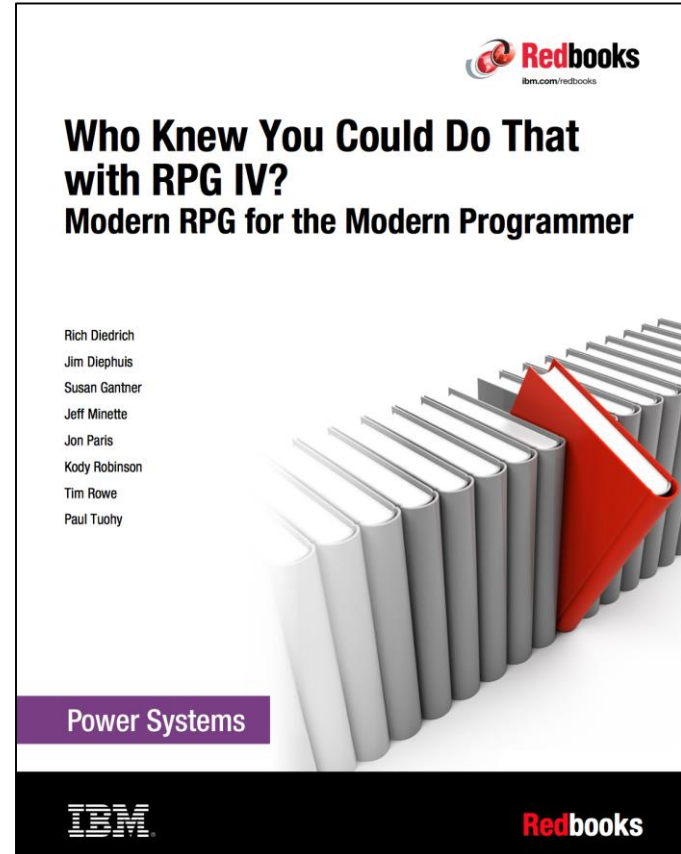
<https://www-01.ibm.com/common/ssi/cgi-bin/ssialias?infotype=AN&subtype=CA&htmlfid=897/ENUS217-151&appname=lenovous&language=en>

New RPG Redbook

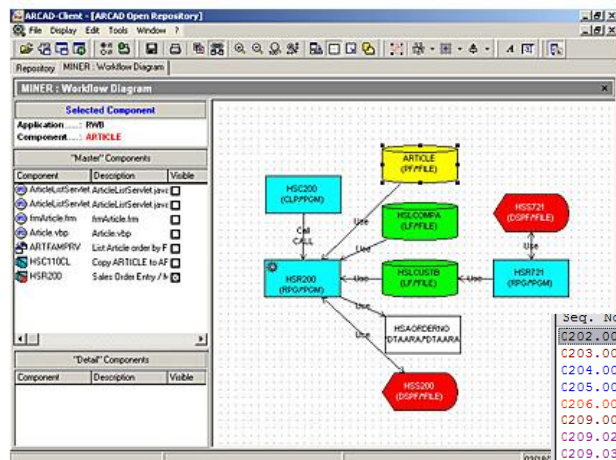
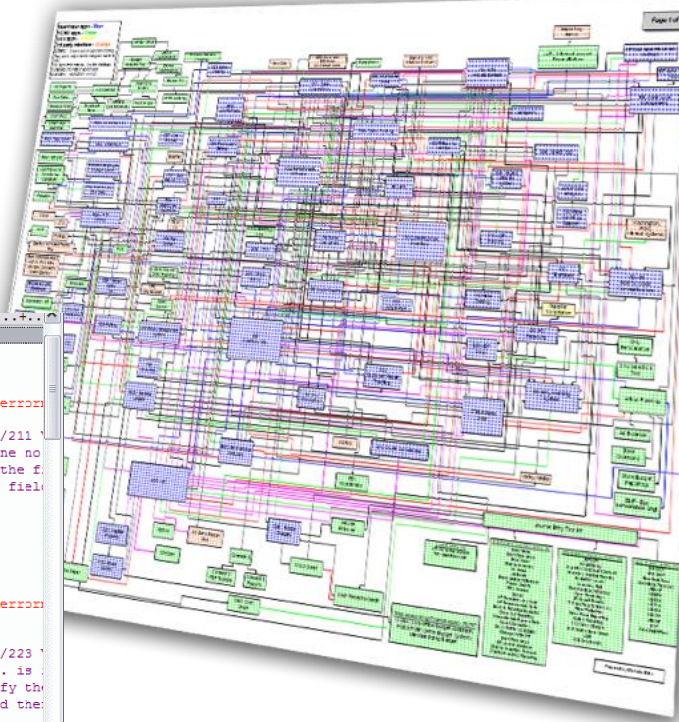
- Modern RPG
- New in Dec 2016
- Updated from the original book from 2000
- Many of the same expert Authors, plus a few New ones!

10300+ Downloads!!!!

<https://www.redbooks.ibm.com/redbooks/pdfs/sg245402.pdf>



Tools for Program Understanding

[illegible]

ARCAD – Observer

<http://arcadsoftware.com/products/arcad-observer-application-analysis/>

Why a Tool for Analysis?



- Rapid analysis for hot fixes
- Application Change Studies (cost estimation)
- Redesign/re-architecting/SOA
- Extraction of business rules
- Application modernization
- Skill transfer
 - Help new people learn the application
- Generation of documentation required by regulatory constraints

Provides the
Blueprint

Time to start understanding your code

ARCAD Observer V1.1.0 is now included in ESS

ARCAD Observer for i - 5733-AO1

- Plugs into RDi
 - Requires RDi 9.6
- Multi-job compile
- Many updates, fixes and enhancements



<https://www-01.ibm.com/common/ssi/cgi-bin/ssialias?infotype=AN&subtype=CA&htmlfid=897/ENUS217-151&appname=lenovous&language=en>

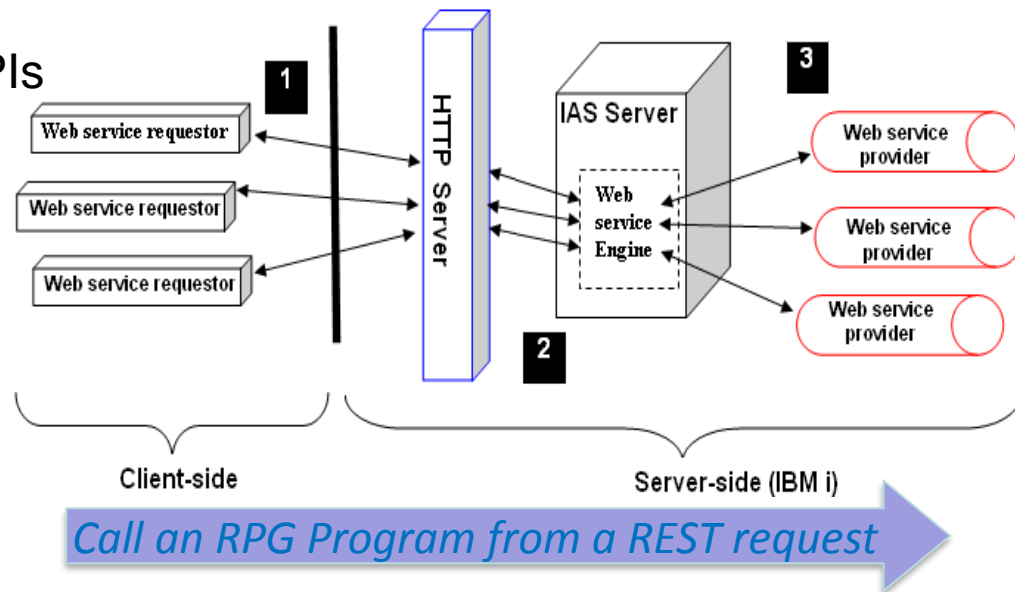
Rest & SOAP APIs

Easily create REST or SOAP APIs

- RPG
- COBOL

API Definition

- REST – Swagger
- SOAP - WSLD



Multi IBM i Node

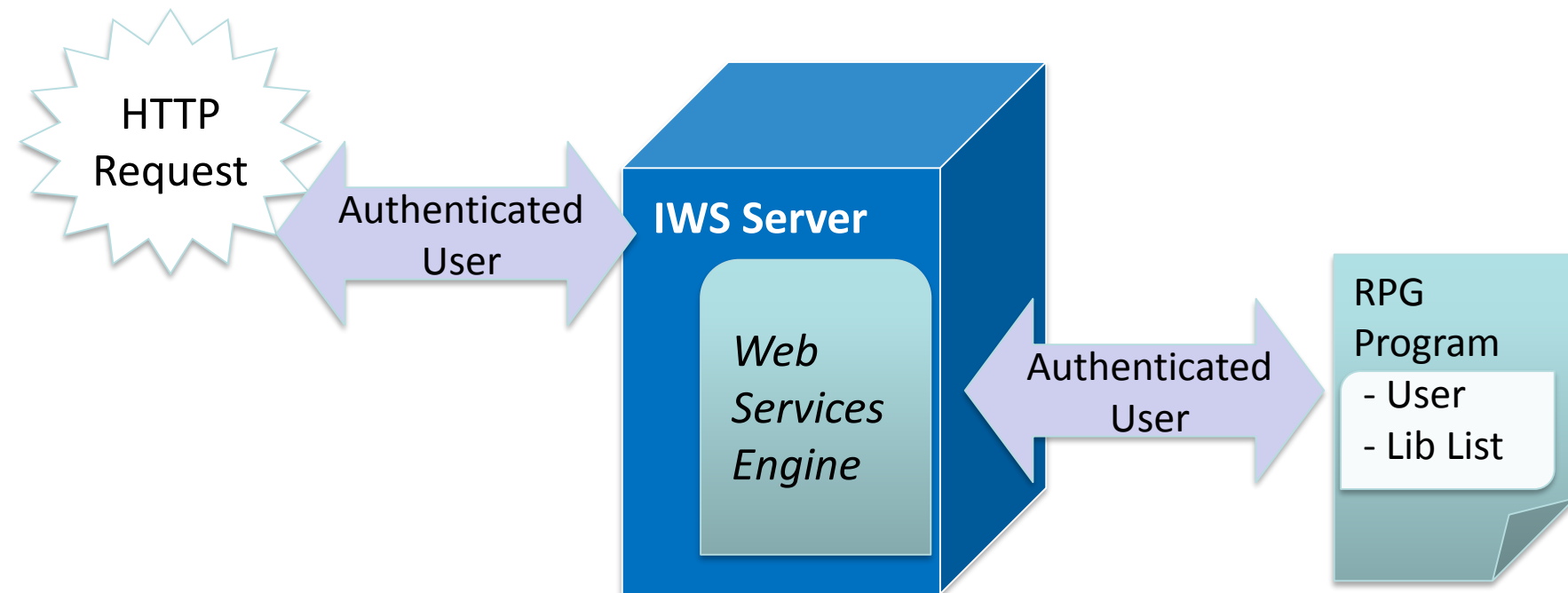
- **Run your Web server on one machine and the backend on a different one**

<https://www-03.ibm.com/systems/power/software/i/iws/>

IWS New Features

Run as the Authenticated User

- The RPG Program or Service Program job runs as the Authenticated user
 - Includes leveraging User Library List



IWS New Features

VARCHAR support – varying length character variables

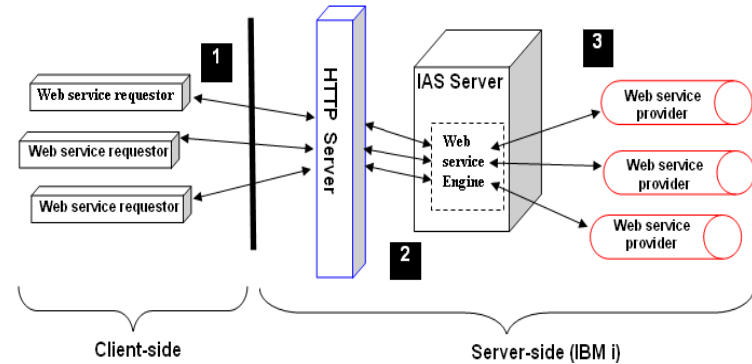
PCML version 7 now supports variable length fields (varchar)

- User can now define a field of type Varchar
- Eliminates the need for an extra field to detect field lengths

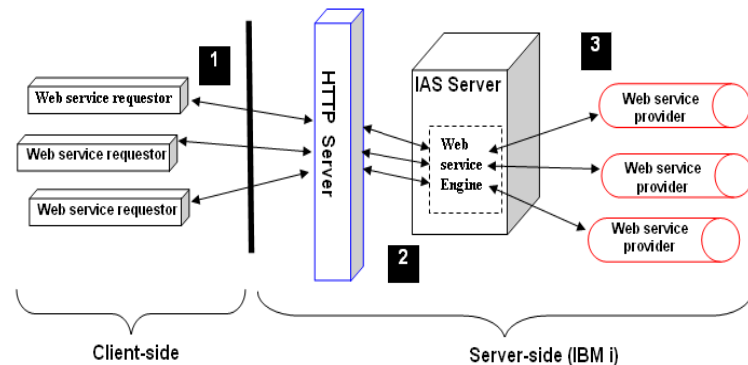
Web Service – Re-Deploy

Redeploy a web service without having to first remove and then re-install

- Simplified maintenance



IWS New Features



Access SOAP Faults from RPG stub PGMs

Call Web Services From an RPG pgm

- **Determine what error occurred during the SOAP services call**
- SOAP infrastructure provides a documented error return structure
 - This will now be **accessible from your RPG** program
 - Improved error response

Compile CL from IFS Source

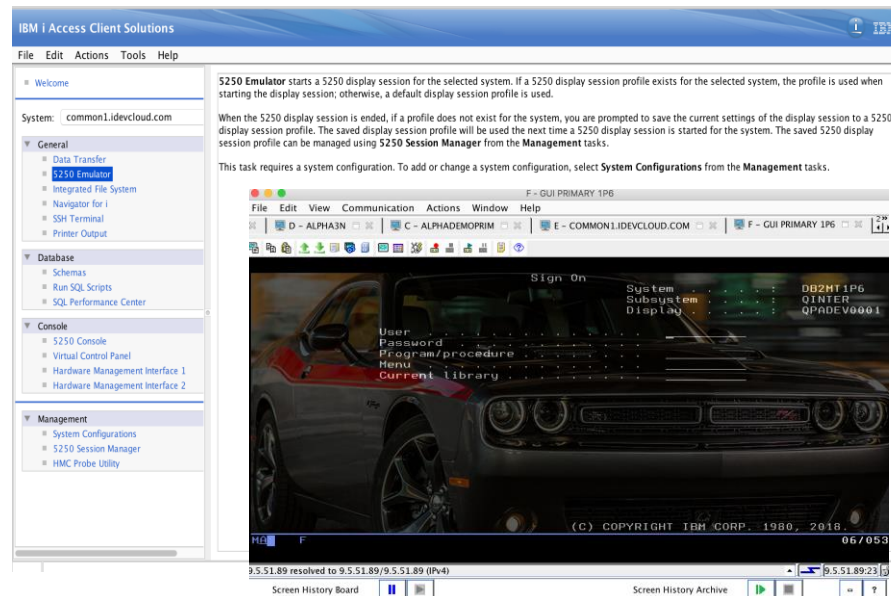
IBM i 7.3 TR4 only

- ILE CL source stored in an IFS stream file can now be compiled
- Following Commands have been updated:
 - CRTCLMOD
 - CRTBNDCL
- Both the SRCSTMF and INCDIR parameters have been added to allow IFS source
- SRCSTMF parameter has been added to the INCLUDE command so users can embed another source file stored in IFS stream files
- Both RPG and CL Source can now be managed by



Access Client Solutions (ACS)

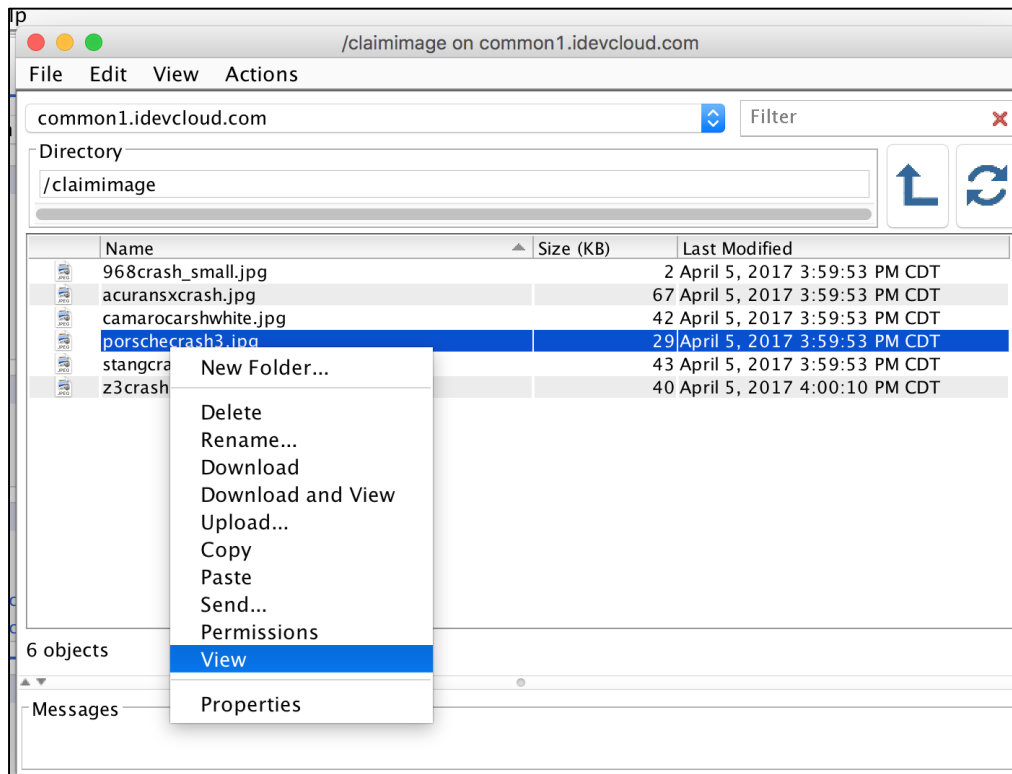
- IBM Access Client Solutions
 - Strategic solution for Accessing and Managing your IBM i
 - Supports
 - Windows, including Windows 10
 - Mac
 - Linux – All distributions
- Database tools
 - Run SQL Scripts
 - Index Advisor
 - Schemas
 - Visual Explain
 - Plan Cache
 - Lots more...



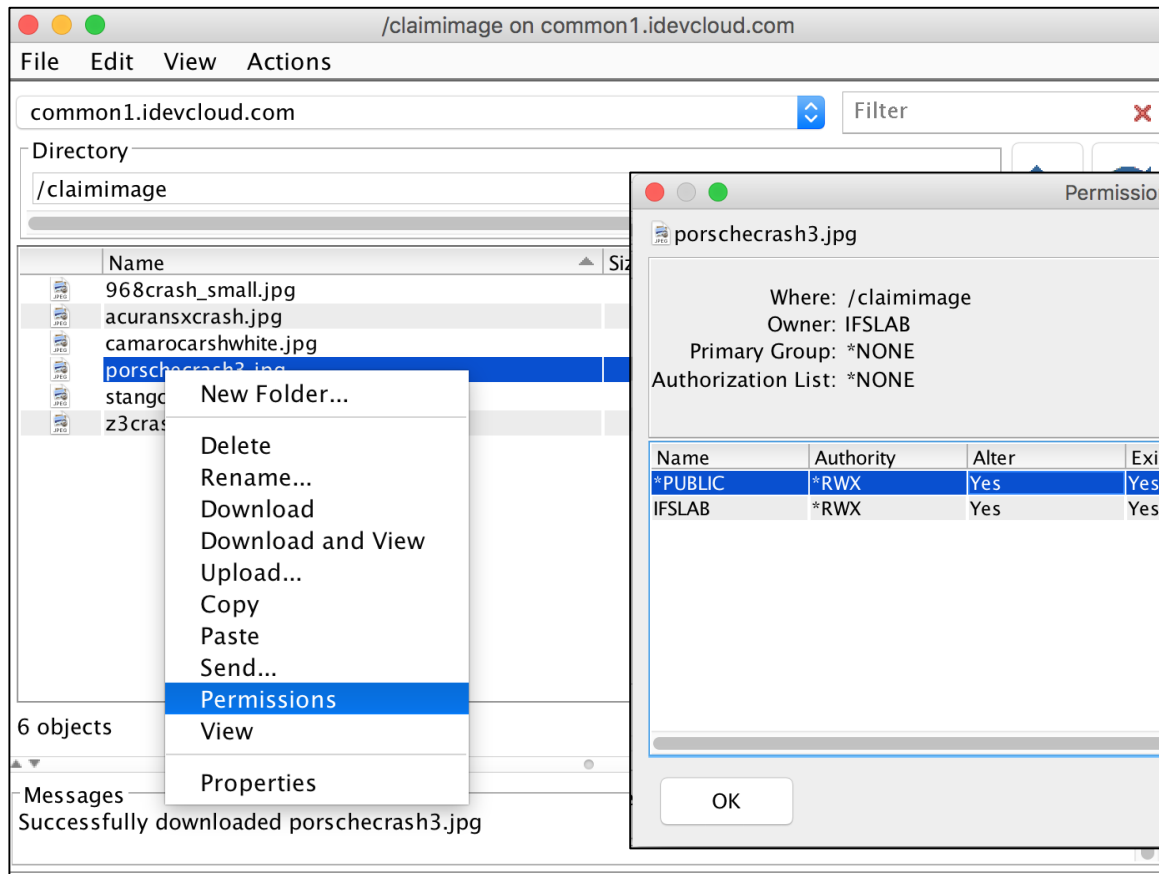
NOTE: This is the last planned release of ACS to support Java 6 and Java 7 as a minimal level. Future releases of Access Client Solutions will require an minimal level of Java 8.

Access Client Solutions

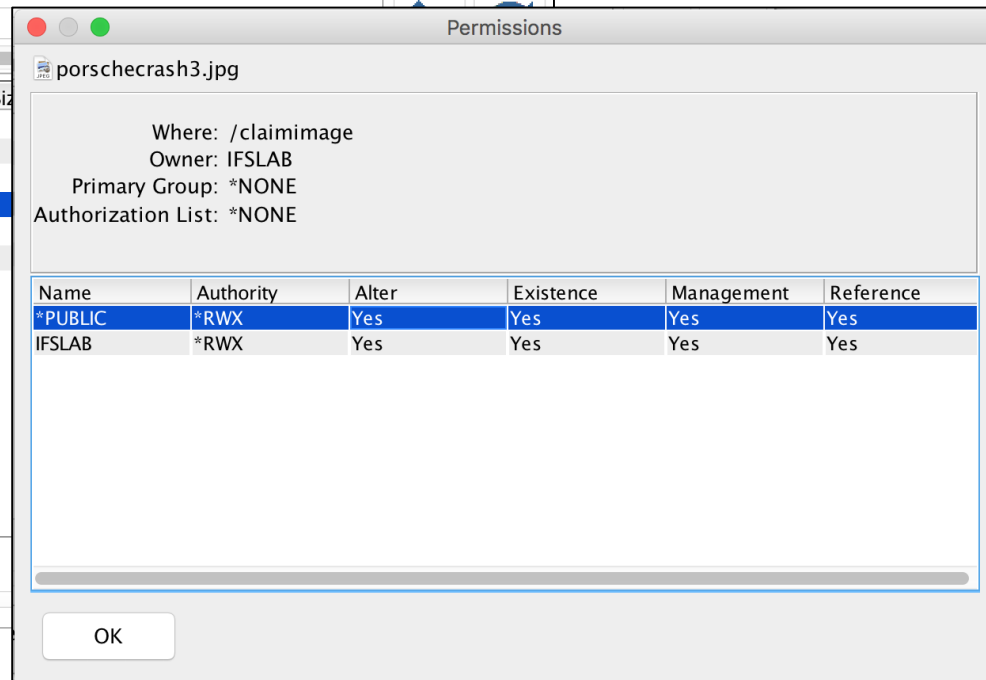
- Integrated File System
- **Directly View** select Files
- Downloads to your device and uses local view tools



Access Client Solutions

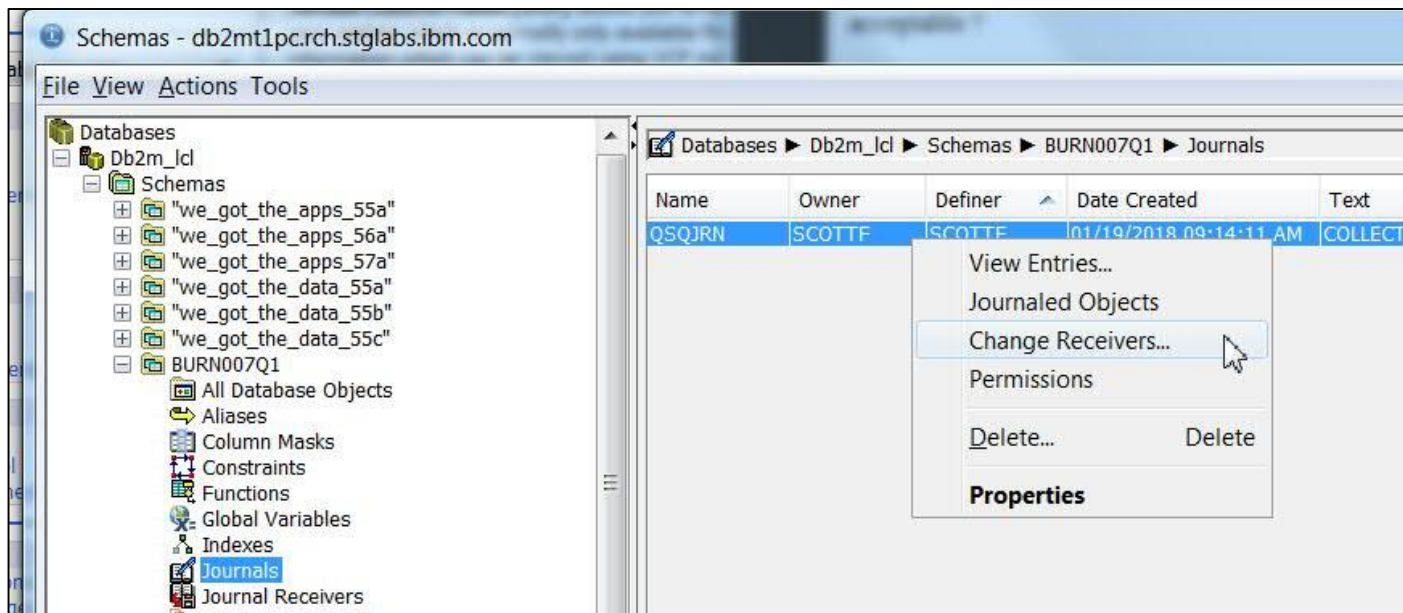


View Permissions on every Folder and File



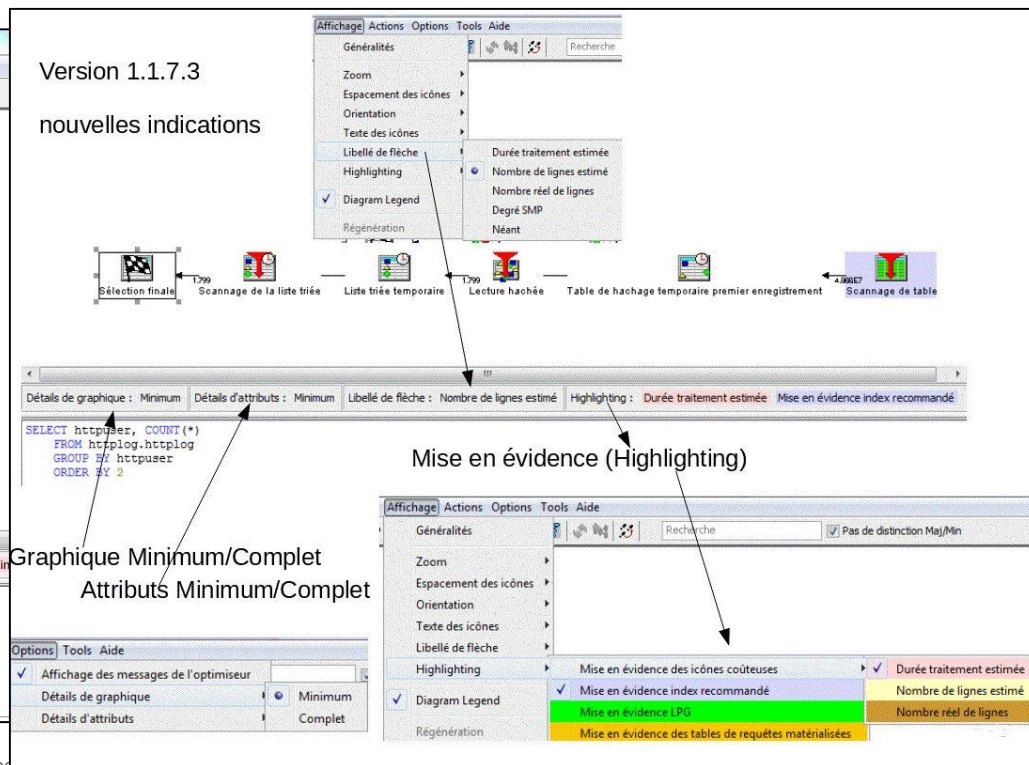
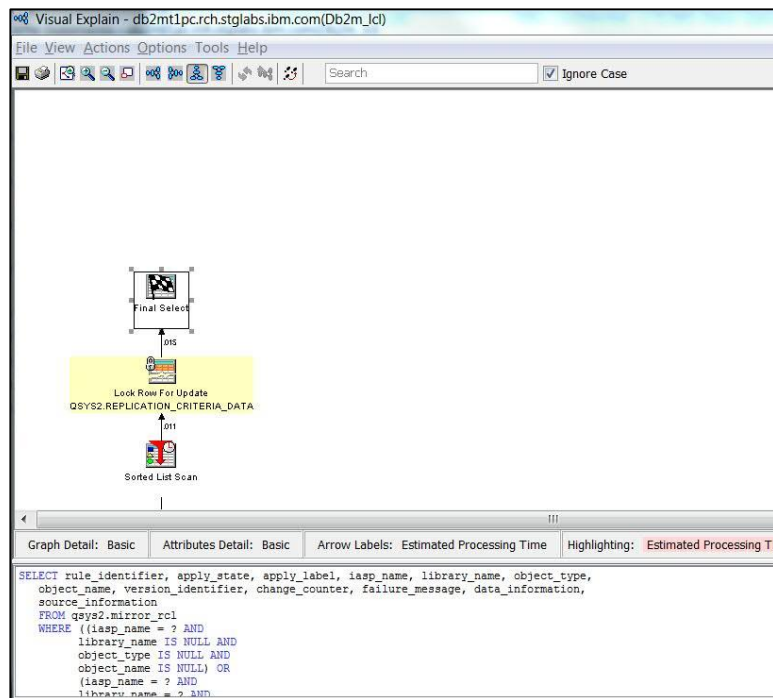
ACS – Database Tools update

- Support for **Properties** and **Change Receivers** actions are added to Journal objects

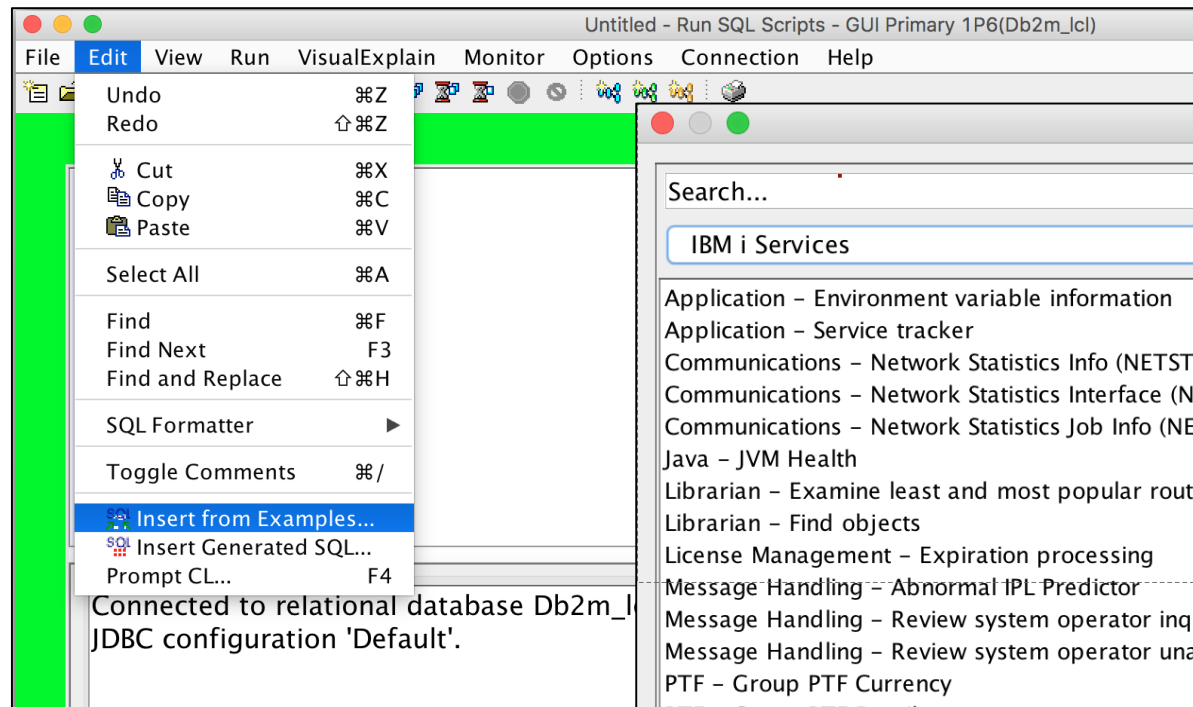


ACS – Database Tools update

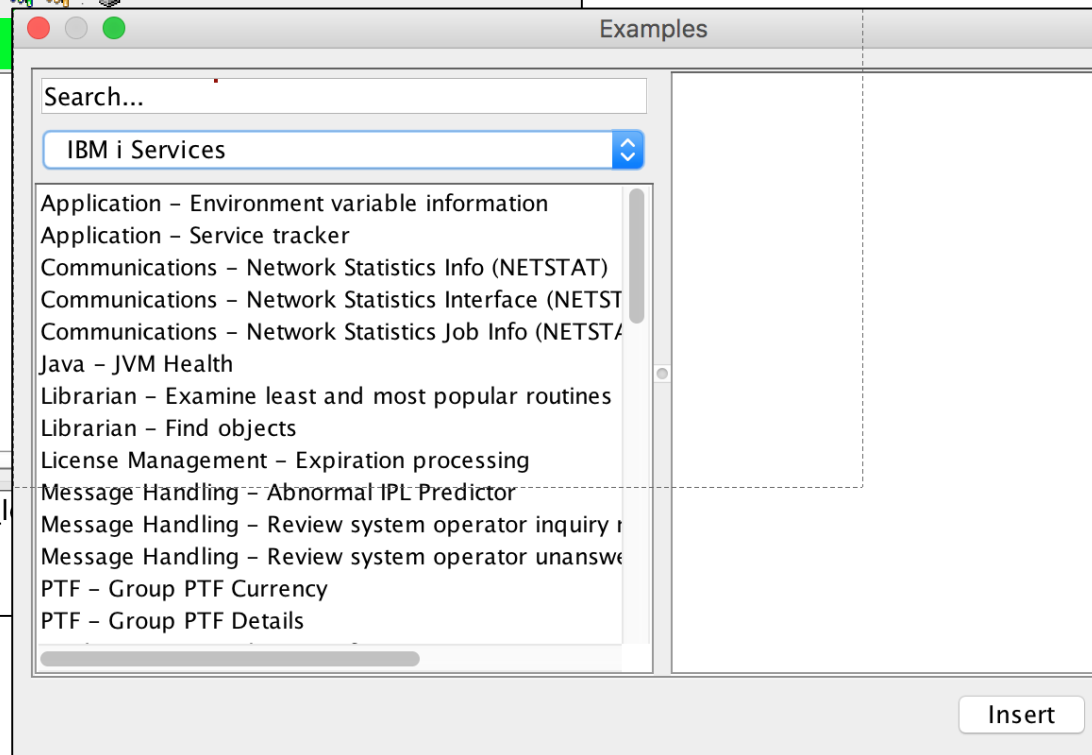
- Within **Visual Explain** a **new legend** has been included to help the user better understand what is being viewed



ACS – Database Tools update – SQL Services



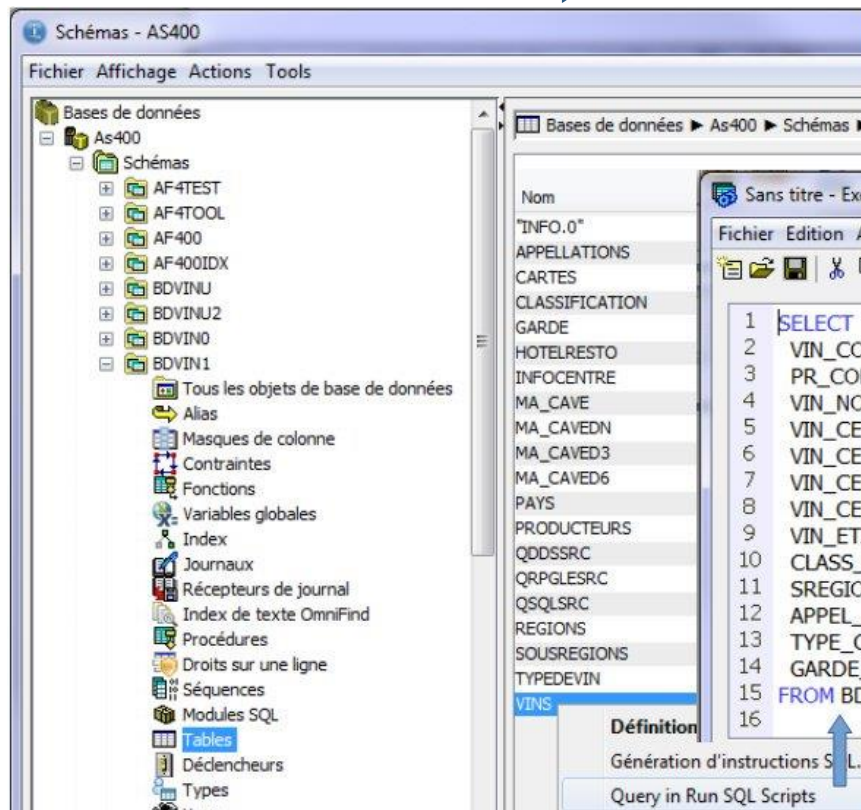
Examples included in ACS



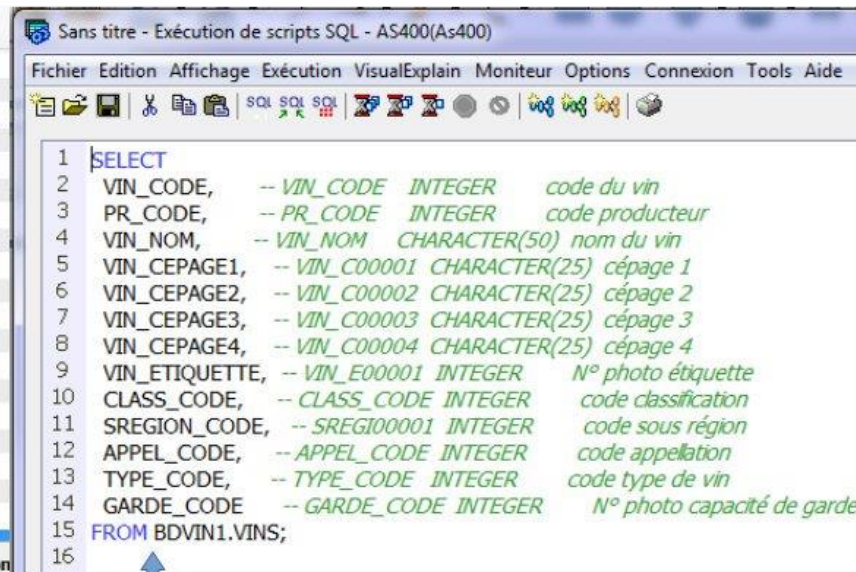
<http://ibm.biz/DB2foriServices>

For the latest details on the supported services see the SQL Services developerWorks page.

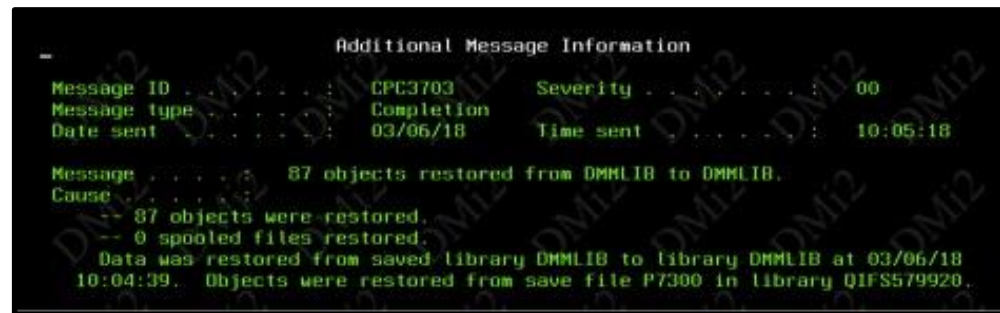
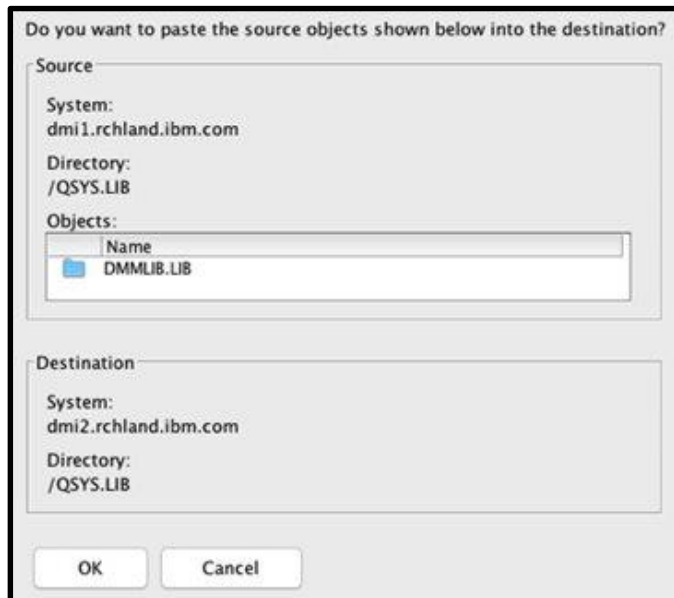
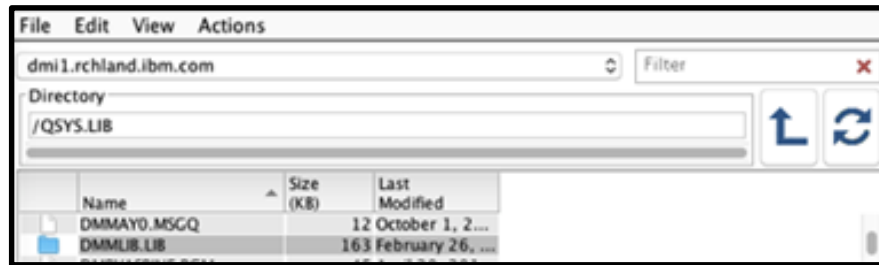
Have you seen this option? (handy, when you do not know the list of columns in a table)



Depuis l'option « Schémas »



Copy & Paste of a LIBRARY from one system to another



IBM Notes and Domino

IBM Domino 9.0.1 FP10

- Upgrade Eclipse to 4.6.2
- Upgrade embedded Sametime to 9.0.1x
- Upgrade to JVM 1.8
- Java 1.6 going out of service
- Add on installer for CCM
- Many updates and fixes

For the latest details see the IBM i developerWorks Domino

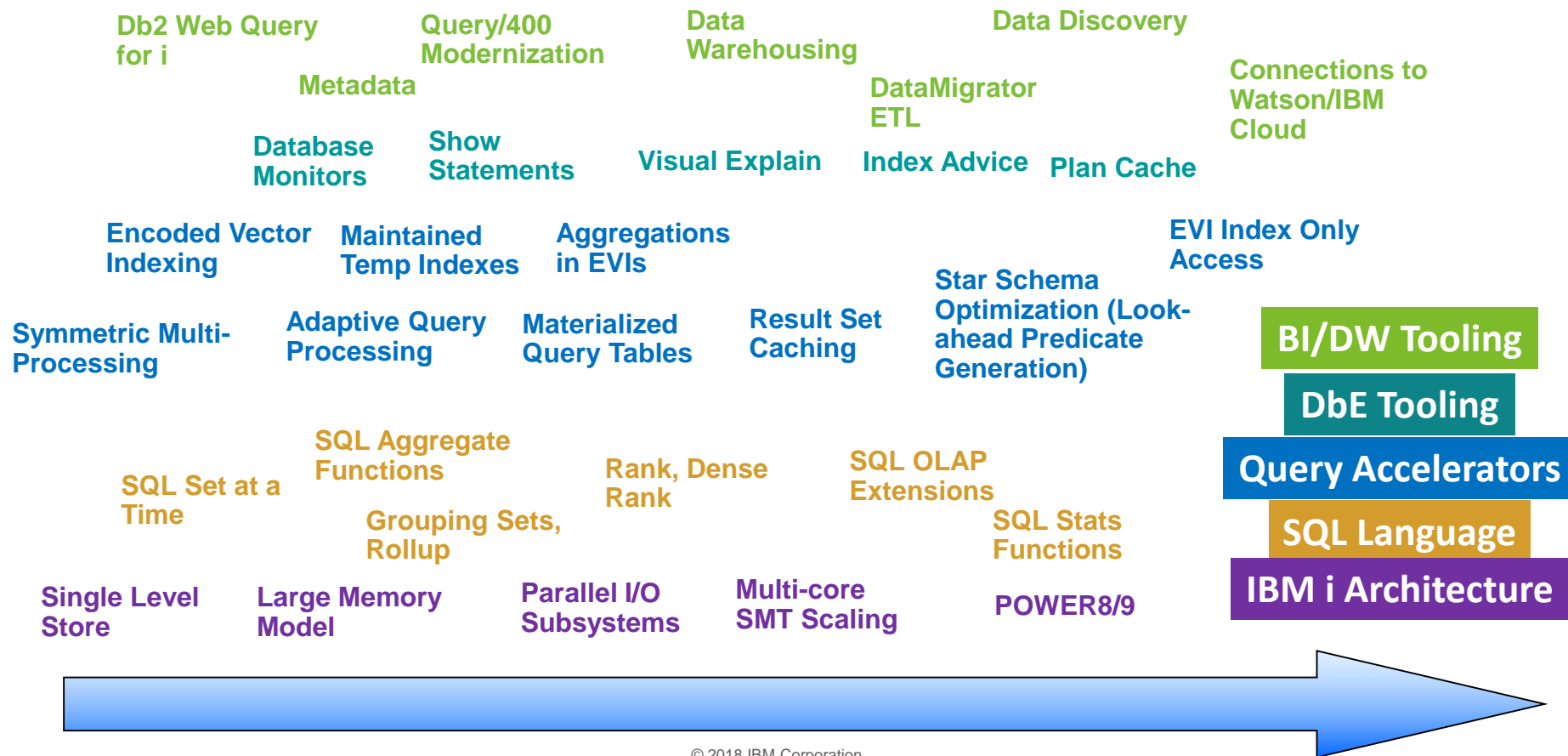
<https://ibm.biz/BdZBZm>





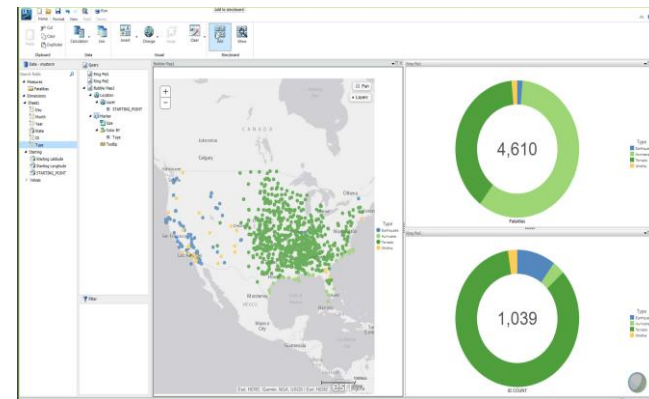
Db2 Web Query 2.2.1

IBM i, Db2 for i and Db2 Web Query



Db2 Web Query Version 2.2.1

- Steps beyond traditional Business Intelligence into Data Discovery
 - New data driven Visualization empowers:
 - Users, Analysts, and Data scientists
 - Data layers (e.g., demographics) for geographic maps
 - What is the average income in this zip code?
- Consolidate, Prepare, and Transform Data with DataMigrator ETL
 - Even augment existing data with data from Watson
- Install or upgrade in 15 minutes with the “EZ-Install” Package
 - Includes 100's of sample reports, for the business and I/T



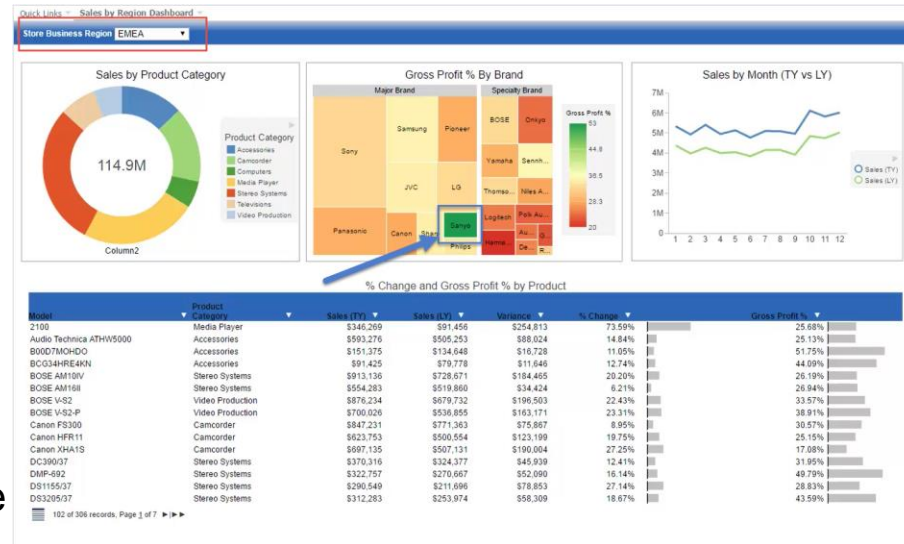
Video Demonstrations at ibm.biz/db2wq-221-videos
db2webqueryi.blogspot.com

GA 12/08/2017

No Charge Upgrade from previous versions**

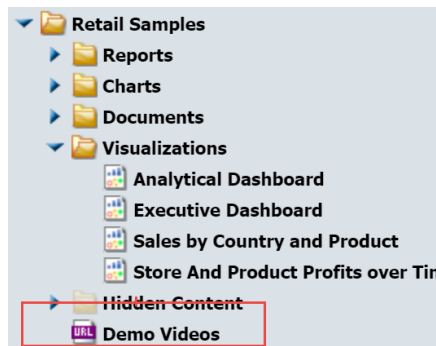
Enhanced “In-Document Analytics”

- Think “Active Reports” for current Db2 Web Query users
 - New default donut charts
 - Tree map providing visual information
 - Size and color of box represent different measurements
 - Ex: Sanyo (green) has high gross profit% but lower revenue (smaller box)
 - Automate bursting of the report to mobile device users
 - Based on some key field like REGION_ID



New Visualizations

- Build with new InfoAssist+
 - Empower End Users
 - Visualize Data
 - Interact with the Data
 - Marquis filtering across associated views
 - Simplified focus of interest
 - Can work as Run Time user or InfoAssist+ User
- New Sample Reports with “how-to” build video demonstrations



Db2 Web Query Installation and Setup With the 2.2.1 **EZ-Install Package**

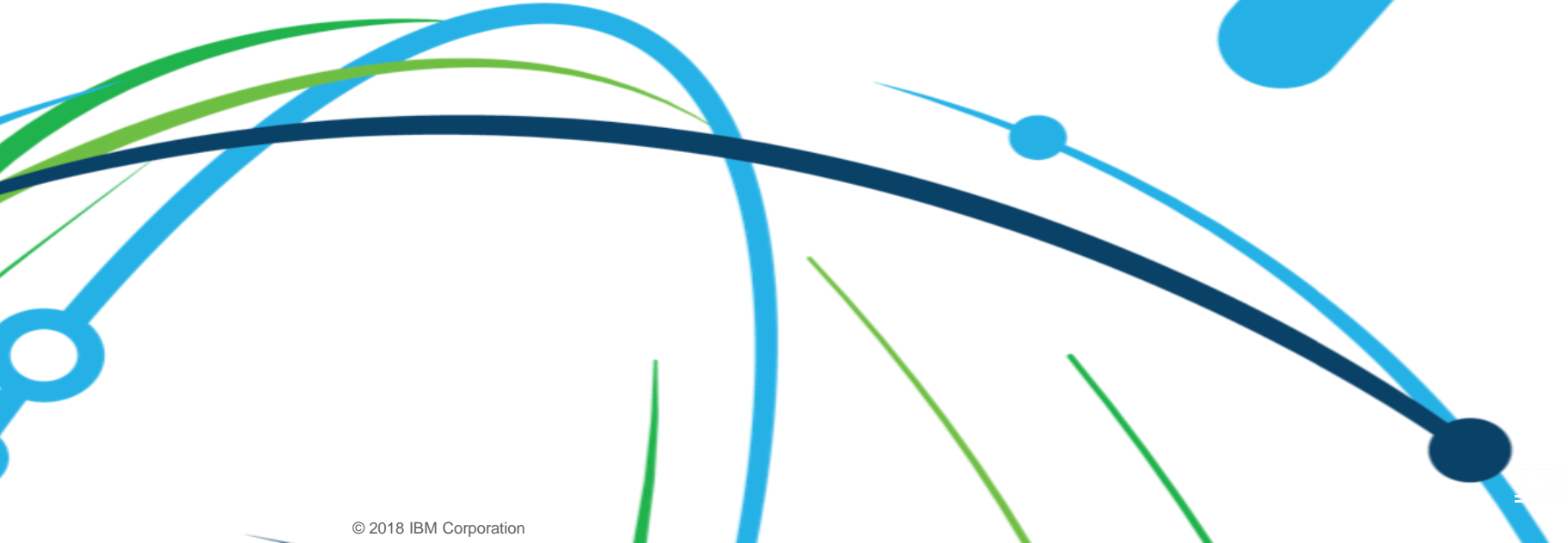


Up and Running in 15 Minutes
100's of Sample Reports
Ready to Learn with Guided Tutorials
Query/400 Discovery Tool
70 Day Trial

Ready to go DEMOs

Request by sending email to QU2@us.ibm.com Include name, company name, and server s/n

Geographically Dispersed Resiliency (GDR)



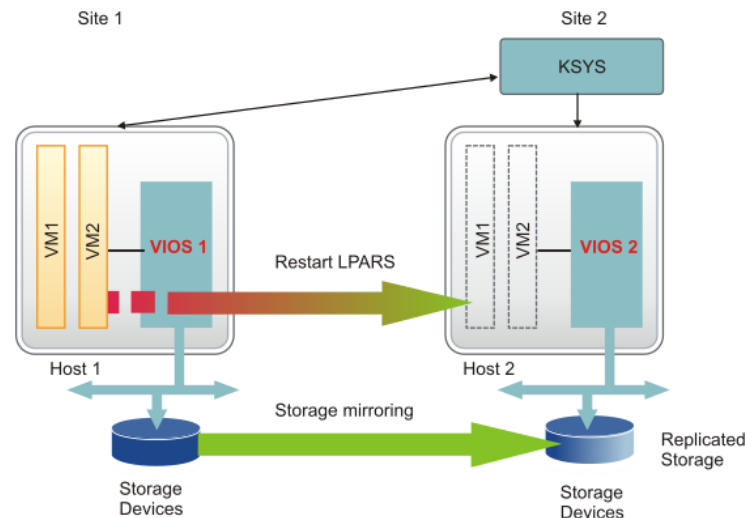
Geographically Dispersed Resiliency (GDR) V1.2

Availability and Disaster Recovery Made Simple

- Announced Oct 10, 2017
- GA'd Dec 15, 2017
- Supports: AIX, **IBM i**, Linux, DS8000, Storwize, EMC, Hitachi
 - Easy install
 - Inexpensive to acquire
 - Operationally simple including non disruptive disaster recovery rehearsal
- Who's it for
 - Everyone: DRaaS MSPs and end customer users

GDR V1.2 for Power Systems

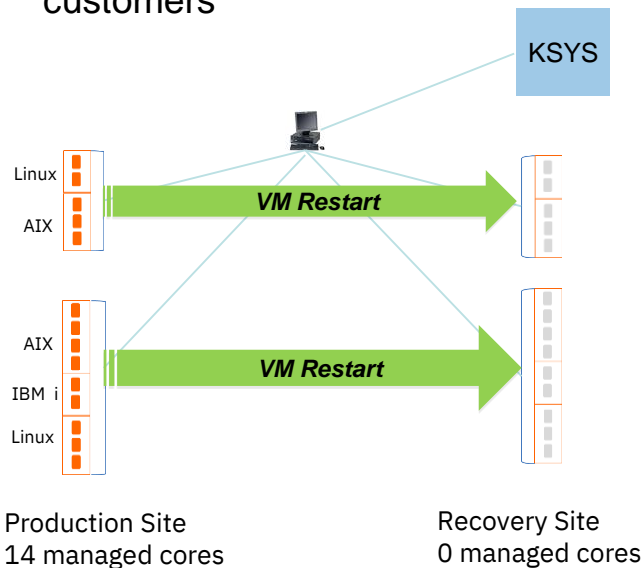
- GDR provides high availability and disaster recovery solutions based on virtual machine restart technology
- KSYS is the orchestration controller
 - manages the real-time replication of the VMs between storage servers
 - manages the VM restart operations between source and target systems
 - installed on an AIX partition
- GDR is deployed via VIOS and PowerVM
 - Supports AIX, **IBM i** and Linux
 - DS8000, Storwize, EMC and Hitachi



- VMs are replicated real-time via SAN storage
 - synchronous mode replication: RPO of 0
 - asynchronous mode: RPO seconds/minutes
- GDR licenses reside in Ksys partition

GDR V1.2 for Power Systems

- Virtual Machine replication & restart solution for disaster recovery
 - AIX, **IBM i** and Linux Power System customers



- Offering construct
 - Storage based VM replication
 - Ksys (orchestrator partition) manages replication and VM restart
 - GDR licenses reside in Ksys partition

GDR for Power Systems – 5765-DRG (orderable via AAS on Aug 11)		
Software tier	small processor group/core	medium processor group price/core
List price for managed cores (US pricing example)	\$1020	\$1575

U.S. prices

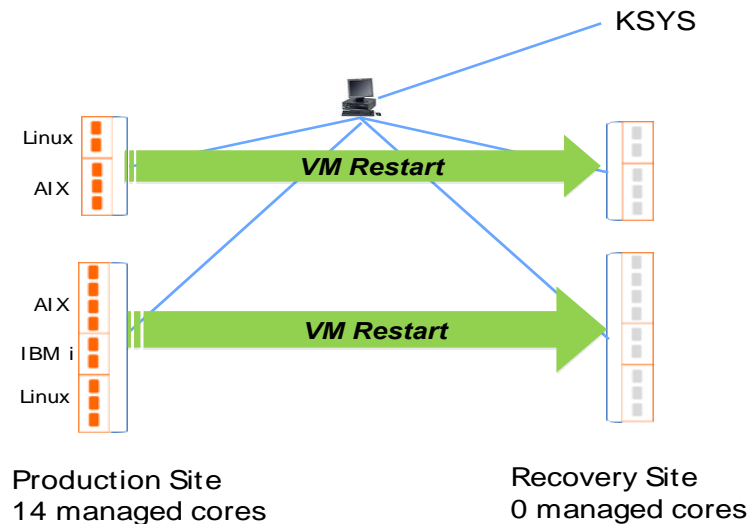
Priced per managed production core

No license required on recovery system

First year SWMA included

GDR Pricing Example

- Using our example of 14 managed cores on the production servers
 - Production servers in this example are in the small processor group therefore \$1020/core
 - 14 managed cores = 14 GDR entitlements to be installed on the KSYS partition
 - Total price; \$15,300 (U.S. prices)
 - DRaaS hosted customers can conduct disaster recovery testing 4 times a year for 72 hours per test



GDR for Power Systems – 5765-DRG (orderable via AAS on Aug 11)		
Software tier	small processor group/core	medium processor group price/core
List price for managed cores (US pricing example)	\$1020	\$1575

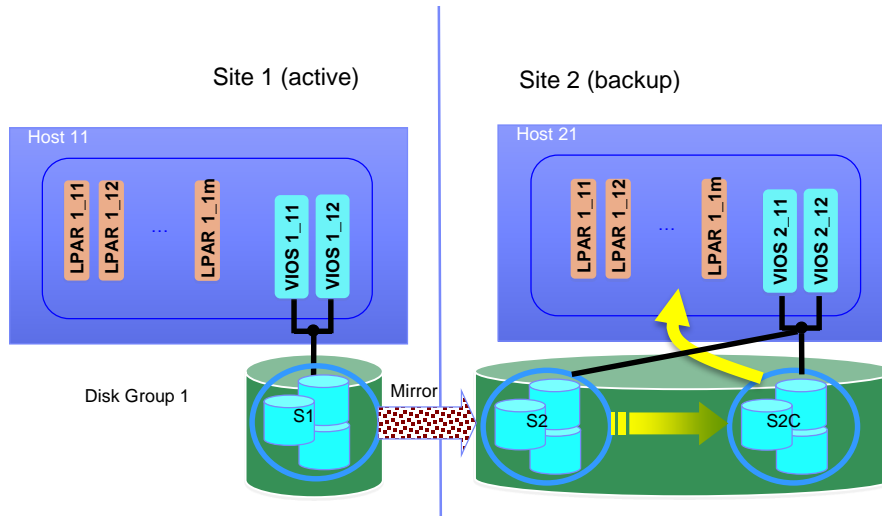
PowerHA for AIX + GDR

automated disaster recovery operations with a PowerHA AIX standard edition cluster



Host level VM restart of production PowerHA cluster in Madison to the Chicago disaster recovery center

DR Failover Rehearsal: non disruptive disaster recovery testing



K-sys enables non-disruptive DR testing

Copy storage on recovery site and use that to start VMs on back up system

Network isolation needs to be established by the administrator

If site specific VM network config is supported: Test related network config could also be supported

Want to see easy ? watch this live demonstration



IBM Geographically Dispersed Resiliency (GDR) for IBM Power Systems Demo

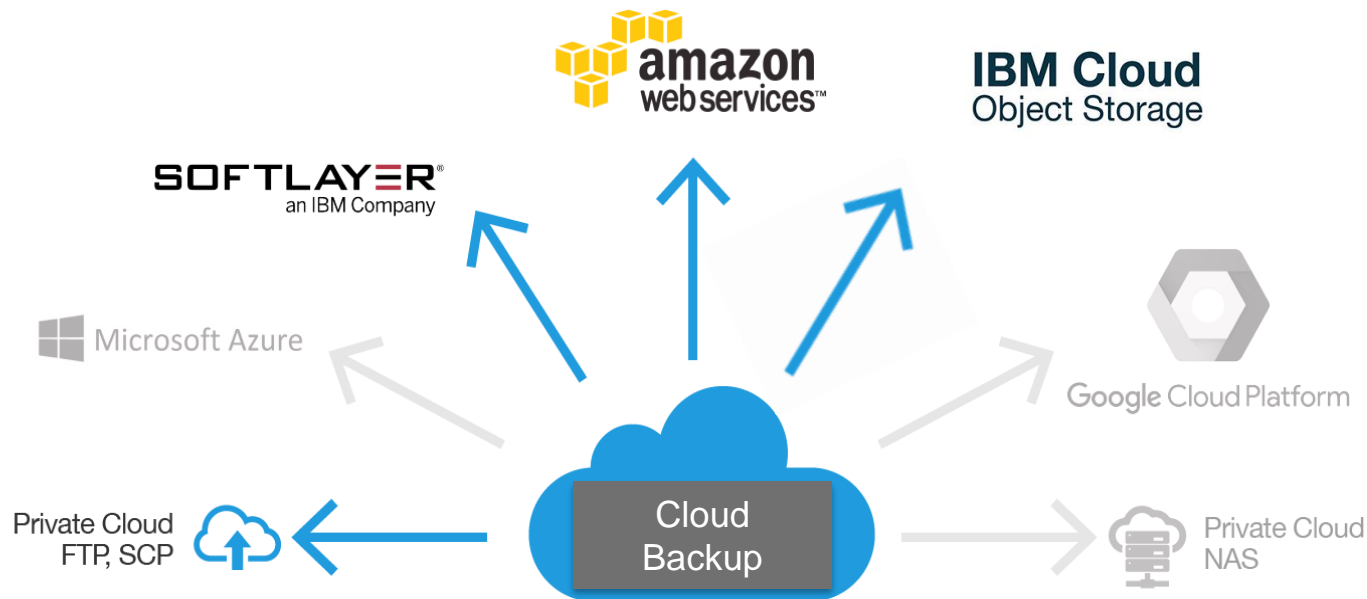


Shawn Bodily
Senior IT Consultant

sbodily@cleartechtechnologies.net



Connect for Infrastructure: Cloud Storage Solutions for i (ICC)



Cloud Storage Solutions for i offering price/licensing

PID: 5733 ICC V1R2	Description	Price
Option 1	Cloud storage API, BRMS enabled	\$2400/VM
Option 2	Compression and Encryption	Option 1 + \$1000/VM

U.S. list prices, prices are subject to change at any time

- Priced per LPAR (VM)
- Cloud storage: Amazon, Softlayer, or BP cloud providers supporting SWIFT or S3
- BRMS will automatically create media class, storage location, move policy, control groups, etc.y
- [developerworks wiki](#)
- [knowledgecenter ICC](#)

New VTL solution for IBM i

The small VTL- Appliance (DSI 425) is designed for efficiency in small and medium environments and includes security and deduplication functions. Customers can set up a high availability environment by pairing two small appliances, each of which can scale up to 24 TB physical storage space. This model includes disk storage to store deduplicated data.

The large VTL – Gateway (DSI 400-EV0/400-EVD) is designed for efficiency in medium to large environments to help keep pace with rapidly expanding data by utilizing state-of-the-art deduplication for data storage. As data grows, there is no need to remove old storage. New storage modules can be added to existing large Gateway VTL systems to scale data storage environments. This model acts as a gateway and requires external disk storage arrays to store the deduplicated data. It can scale up to multi petabytes of physical capacity. External storage is required, such as IBM Storwize V5000, V7000, or IBM SAN Volume Controller.

A migration feature is provided to simplify the migration path from ProtecTIER to the small and large VTLs. Software is required for each of the VTL appliances, it is pre-installed on the nodes before shipment.

LINK:

<http://www.dynamicsolutions.com/products-solutions/ibm/brva-vtl/deduplication/#fndtn-nav-137>

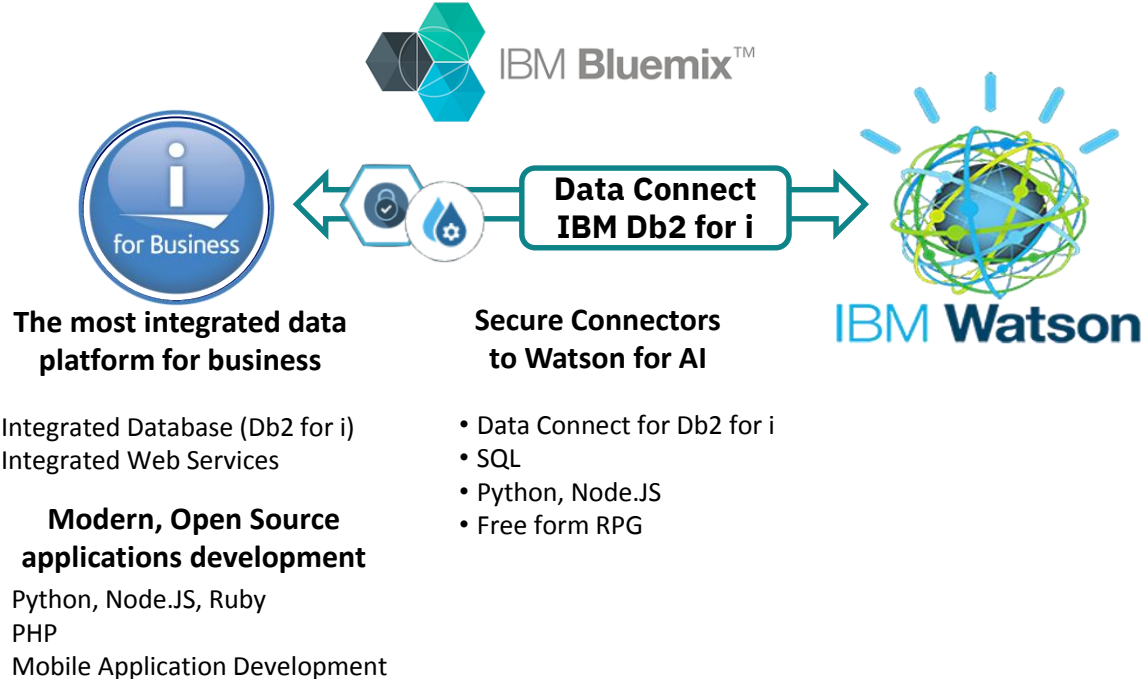


Ready for AI: Connecting your business to the future



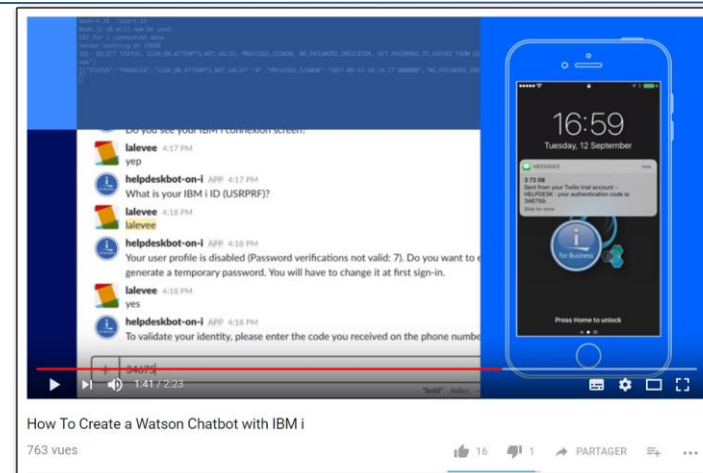
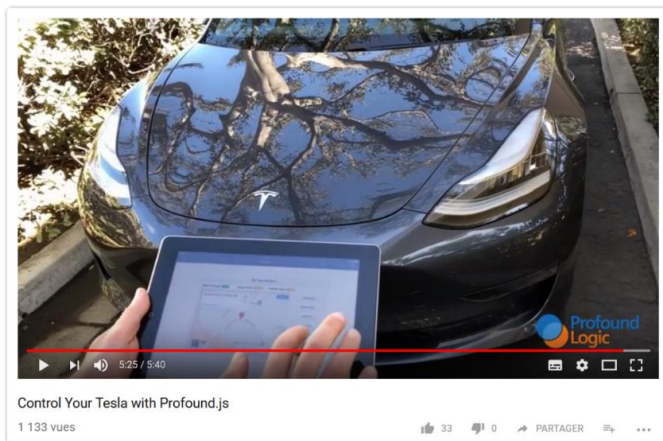
- 100+** Offers 100+ seating frames, fabrics and finishes
- Wanted to help customers visualize possible combinations
- Created a 3D configurator with open source software on IBM® i
- Inspires customers to create their ideal designs
- 50%** 50% faster deliveries, as configurator accelerates manufacturing
- Will use IBM Watson® cognitive technology to help consumers find their preferred fabric

<https://www.ibm.com/case-studies/c223622o41231s41>



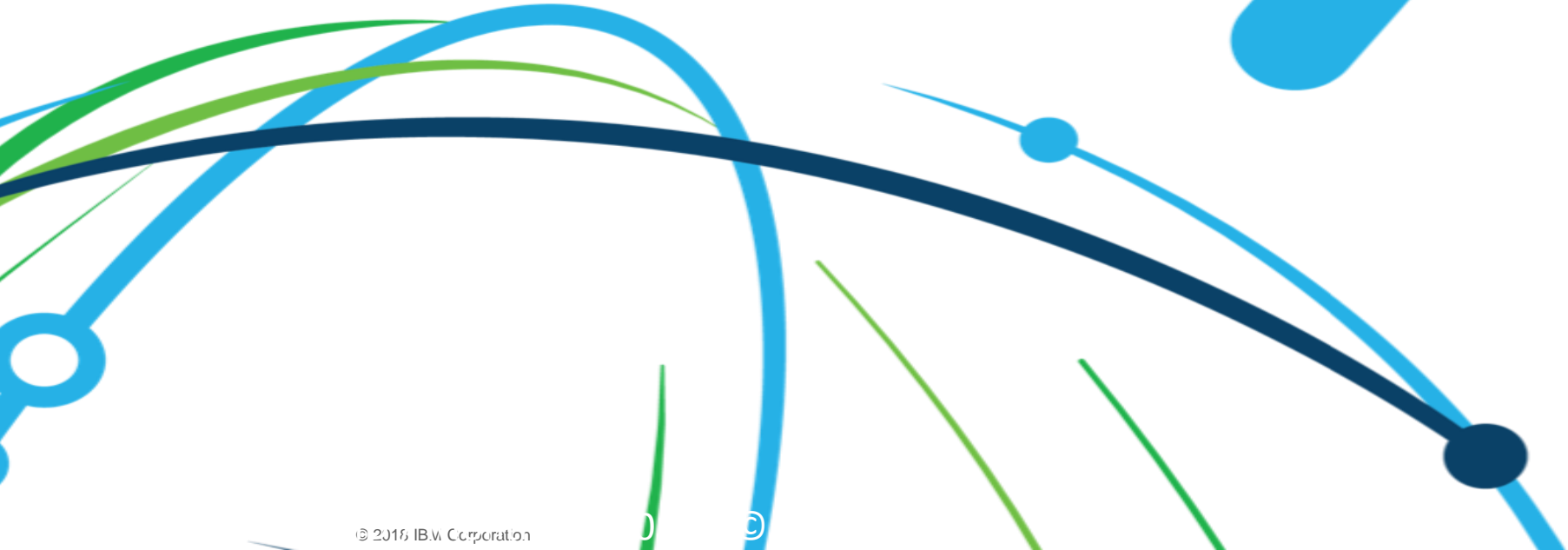
How to create a Watson Chatbot with IBM i

Automate and simplify processing for recurring help desk tickets with Watson and IBM i.





More messages & Additional Material



IBM PowerAI Belgium

Inaugural Meetup event - Tue May 8 at 6:00 PM



IBM PowerAI Belgium

Location
Brussels, Belgium

Members
169



Organizers
Franz Bourlet and 1 other

Schedule

...



YOUR NEXT MEETUP

IBM PowerAI Belgium - Inaugural Meetup event

IBM PowerAI Belgium · 56 Members



Tue May 8 at 6:00 PM



Bronks Theatre
Rue du Marché aux Porcs
15-17

Agenda :

17:30 - 18:00 - Welcome

18:00 - Introduction

18:10 - **What is PowerAI**, what does it run on and how will it speed up my ML/DL workload?

19:00 - **Nvidia : Deep Learning Demystified**

19:45 - **PowerAI Vision** - A **demo** of AI Vision - showing how you can **build an image recognition model in minutes**, without writing any line of code

20:15 - Wrap Up and Close, followed by refreshments

Université IBM i 2018 in Paris



Université IBM i 2018

Mercredi 16 et jeudi 17 mai 2018
IBM Client Center Paris

[Accueil](#)[Agenda](#)[Sessions](#)[Exposition/Sponsors](#)[En savoir plus](#)

Madame, Monsieur,

Nous avons le plaisir de vous inviter à la 8ème édition de la **conférence annuelle dédiée à l'IBM i**.

2018, c'est l'année du processeur POWER9 et des 30 ans de l'IBM i, avec au programme :

- 2 sessions plénières pour faire le point sur les roadmaps, les dernières évolutions et comment l'IBM i s'inscrit dans l'informatique cognitive
- 56 sessions à la carte autour de 7 thématiques : DB2-Analytique, DevOps-Modernisation, IA-Watson, Sécurité-GDPR, Système-Performances, Infra-HW-Stockage et Cloud
- 3 sommités IBM Worldwide : **Stefanie Chiras** (*Vice-Présidente des offres IBM Power Systems*), **Alison Butterill** (*Directrice des offres IBM i*) et **Stacy Benfield** (*Spécialiste des performances IBM i*). Elles interviendront pendant les plénières et animeront des sessions à forte valeur ajoutée
- 1 village "CSP/MSP" (Cloud - Services Managés) qui regroupera les principaux acteurs du marché pouvant vous proposer des solutions d'externalisation de secours et de sauvegarde IBM i dans le Cloud
- 1 espace dédié au nouveau club COMMON France
- Des animations autour des 30 ans de l'IBM i


Consultez l'[agenda](#), les [descriptifs](#) des sessions et [inscrivez-vous](#).

Merci à nos partenaires [sponsors](#) : ACMI, ARCAD Software, CHEOPS Technology, CLARANET, D.FI, DRP Software, EUREKA Solutions, EVEA Technology, EXPERIA Europe, GID, HARDIS Group, Groupe HISI, ID Info, IPLS, ITHEIS, RAZ-LEE, ROCKET Software, SCC, SMA Solutions et SYNCSORT.



Mercredi 16 et jeudi 17 mai 2018

IBM Client Center Paris
17 avenue de l'Europe
92275 Bois Colombes

 Plan d'accès

[Inscrivez-vous](#)

- Retrouvez les présentations de l'Université IBM i 2017



ithankyou

IBM i 7.3 – Simplifying Insights and Intelligent Security

- ★ • **DB2 for i Temporal Support** allows clients to conduct accurate analysis of data within a specific historical time period and contrast that against current data sets
- ★ • New **OLAP capability** added to the SQL language on IBM i allows clients to perform more advanced analytics on their data
- ★ • **Security Authority Collection** provides guidance for establishing security levels based on usage of data and
 - Planned and unplanned downtime from hours to minutes with **PowerHA V7.2 for IBM i HyperSwap Cluster**.
 - New version of **DB2 WebQuery for IBM i** expands options for data sources including some Open Source data environments such as Postgres and Maria DB



- Git and Orion application environments are being added to the **IBM i Open Source** suite of products, providing clients with more choice for their business solutions on IBM i.
- New enhancements to **RPG** streamline and simplify development allowing developers to innovate more easily and manage their applications more efficiently.
- The more modern GUI interface of **IBM i Navigator** improves ease of use for system management tools and for monitoring performance.
- Much, much more

[Steve Will's You and i blog on IBM i 7.3 announcement](#)

[IBM DeveloperWorks Wiki : IBM i 7.3 - Base Enhancements](#)

IBM i 7.3 TR1 Summary

- **Optical Containers** – Adding value for **USB**
- **Rational Developer for i: Mac OS X** support and more
- **IBM i ACS:** Smart Card support and more
- Open Source offerings: **perl**, **node.js v6** and more
- Db2: **JSON_Table** and more
- **IBM Cloud Storage Solutions for i:** BRMS Backup to Softlayer

[Steve Will's You and i blog on IBM i 7.3 TR1 announcement](#)

[IBM DeveloperWorks Wiki : IBM i 7.3 - TR1 Enhancements](#)

IBM i 7.3 TR2 Summary

- S812
- Db2
 - More **JSON**
 - **SQL Services**
- Access Client Solutions Version 1.1.7.0
 - **Schemas**
- Open Source
 - **rsync, wget, curl, SQLite**
 - **git** enhancement
 - GO LICPGM list
- Db2 WebQuery
 - **“Easy Button”** install
 - Sample Admin Graphical Reports
 - New Redbook

[Steve Will's You and i blog on IBM i 7.3 TR2 announcement](#)

[IBM DeveloperWorks Wiki : IBM i 7.3 - TR2 Enhancements](#)

IBM i 7.3 TR3 Summary

- Db2
 - **JSON** Publishing & **Scalar functions**
- USB Installation process
 - Copy image for **D-mode IPL onto USB** drive
- 4767 **Cryptographic** Co-Processor support
 - Performance & Most Secure Key Storage
- Open Source
 - Announcement of various features added recently including: **nginx, Orion**
- And More...

[Steve Will's You and i blog on IBM i 7.3 TR3 announcement](#)

[IBM DeveloperWorks Wiki : IBM i 7.3 - TR3 Enhancements](#)

IBM i 7.3 **TR4** Summary

- **POWER9** Scale Out servers support
- **RPG DATA-INTO:**
 - Support for **JSON**
 - and More
- **IWS**
- **CL** in **IFS**
- **ACS**
- IBM i and **AI Watson** Connectivity
- And More...

[Steve Will's You and i blog on IBM i 7.3 TR4 announcement](#)

[IBM DeveloperWorks Wiki : IBM i 7.3 - TR4 Enhancements](#)

IBM i 7.3 **TR5** teasing ;-)

IBM i 7.3 - TR5 Enhancements



| Updated Apr 14, 2018 at 11:53 AM by [ScottForstie](#) | Tags: *None*

Page Actions ▾

coming attraction...

Blog date	Blog link
April 12, 2018	Celebrating IBM i at COMMON POWERUp18
April 02, 2018	IBM i 30th Anniversary Celebration Begins
February 20, 2018	The IBM i 30th Anniversary is Here and We Need Your Photos
March 13, 2018	POWER9 for IBM i and the Announcement of 7.3 TR 4
February 05, 2018	Four User Questions, and Expert Answers That Prove RPG is Strategic
January 11, 2018	Teaching RPG to IBM i Developers
October 27, 2017	Deep Thinking in IBM Rochester With Watson Analytics
October 03, 2017	Announcing IBM i 7.3 TR3 and IBM i 7.2 TR7
September 20, 2017	Promoting IBM i—TCO, TCA, Reliability and Strategy
September 05, 2017	IBM i and Watson
August 22, 2017	Educating Fresh Faces—Boot Camp, Summit and More
July 11, 2017	Promoting IBM i – Fresh Faces!
June 19, 2017	Promoting IBM i—Buzzwords & Hot Buttons
June 13, 2017	Promoting IBM i—Triggering Events
May 30, 2017	IBM i Strategy: The Cooperative Game
May 20, 2017	IBM i Thoughts: COMMON Conference
March 09, 2017	IBM i & RFE – Improving Future Business Value
February 14, 2017	Announcing IBM i 7.3 TR2 & 7.2 TR6
January 30, 2017	IBM i Open Source Directions
January 16, 2017	IBM i Future – 2017 Update

VIDEO SOLUTIONS EDITION

IBM Systems
MAGAZINE

AIX

LINUX ON POWER

MAINFRAME

POWER

IBM i

ADMINISTRATOR

DEVELOPER

TRENDS

TIPS & TECHNIQUES

CASE STUDIES

Blog

You and i

IBM i Trends and Strategies



By Steve Will

Tweet

SHARE

RSS

Previous Post | See All Posts

Teaching RPG to IBM i Developers

January 11, 2018

One of the keys to our IBM i strategy has been to transform RPG into a modern programming language that can be learned easily by non-RPG developers. From survey results to case studies and interactions with developers at user groups and conferences, I think it's pretty clear we're making good on that strategy.

Another part of that strategy, though, is to actually get those developers to learn modern RPG. In today's blog, I'm going to bring you some thoughts and experiences from two of the well-known members of the IBM i community who spend their time teaching RPG: Paul Tuohy and Jim Buck.

Paul Tuohy is well known for his "iTalk with Tuohy" podcasts, as well as his partnership with Susan Gantner & Jon Paris to bring the semi-annual RPG & DB2 Summit conferences to the community. In his own company, ComCon, he serves as a teacher and consultant—and not just on RPG.

Jim Buck recently retired from his career as a teacher at Gateway Technical College, but he has definitely not retired from the IBM i community. He has formed his own company, imPower Technologies.

Recent Posts

Teaching RPG to IBM i Developers

01/11/2018

Deep Thinking in IBM Rochester With Watson Analytics

10/27/2017

© 2018 IBM Corporation

i Can – Technical Tips for i

Blog date	Blog link
April 18, 2018	Copy Performance Data using ACS IFS Tasks
April 10, 2018	Editing a File in the IFS with Navigator for i
March 29, 2018	Working with the IFS: Access Client Solutions vs. Navigator for i
March 12, 2018	How to Save 5250 Configurations as Default Profile
February 21, 2018	Workload Groups and Performance Considerations
February 07, 2018	IBM i 7.2 Improved Temporary Storage Tracking (Part 8)
January 30, 2018	Subsystem Management with Navigator for i, Part 2
December 21, 2017	Active Memory Pools with Navigator for i
December 13, 2017	How to Identify Your Active 5250 Session
November 28, 2017	i Can use IBM DVD Images with my USB 3.0 Adapter
November 14, 2017	IBM i Embraces Syslog
November 01, 2017	Meet the PowerHA Family
October 23, 2017	PowerVM LPM/SRR Automation Tool
October 17, 2017	STACK INFO IBM i Service
October 03, 2017	PowerVM Live Partition Mobility and Simplified Remote Restart
September 26, 2017	System Monitoring for HTTP
August 31, 2017	End Subsystem Options—Optimize Ending Your Subsystems
August 22, 2017	Manage Trigger Programs in Productions
August 03, 2017	Trace Output Formatted for PCAP
July 25, 2017	Route FTP and SMTP Workloads to Their Own Subsystem
July 13, 2017	Integration Between Navigator and Access Client Solutions
June 22, 2017	Client Advisory Council Meetings in June 2017
May 23, 2017	Graph History – Stacked Charts
May 03, 2017	COMMON Americas Advisory Council (CAAC) and RFEs
April 19, 2017	Subsystem Configuration Documentation
April 05, 2017	IBM i Monitors: Automatic Notification and Replacement Variables
March 29, 2017	PowerVM LinkedIn Group
March 22, 2017	Copy an Open Spooled File
March 14, 2017	Subsystem Management with Navigator for i
March 06, 2017	Determining the Size of QTEMP
March 01, 2017	SNMPv3 Auditing and Other Enhancements
February 21, 2017	Here's to the Women in IT!
February 14, 2017	February 2017 IBM i Announcements
February 08, 2017	Application Administration with Access Client Solutions
February 02, 2017	Application Administration with Navigator for i
January 19, 2017	Optical Containers
January 10, 2017	Latest Navigator for i Enhancements
January 03, 2017	JSON TABLE Function

VIDEO SOLUTIONS EDITION B

IBM Systems
MAGAZINE

AIX

LINUX ON POWER

MAINFRAME

POWER

IBM i

ADMINISTRATOR

DEVELOPER

TRENDS

TIPS & TECHNIQUES

CASE STUDIES

Blog

i Can Technical Tips for i



Dawn May

Tweet

SHARE

RSS

See All Posts

Active Memory Pools with Navigator for i

On the "green screen" you can see what pool a job is running in with Work with Active Jobs (WRKACTJOB); press F11 one time and you'll find a column with the pool number. That's nice, but you need to know the description of the pool that number is associated with.

Read More

Posted: December 21, 2017 | 0 Comments

Recent Posts

Active Memory Pools with Navigator for i

12/21/2017

How to Identify Your Active 5250 Session

12/13/2017

i Can use IBM DVD Images with my USB 3.0 Adapter

11/28/2017

How to Identify Your Active 5250 Session

I've been using tabbed sessions in the ACS 5250 emulator for a long time now. I really like the tab feature; tabs along with watermarks made it easy to identify which system I am logged in to. With a bit of configuration, you can make it easy to identify the active tab as well as customize the appearance of inactive tabs.

Read More

Posted: December 13, 2017 | 0 Comments

i Can use IBM DVD Images with my USB 3.0 Adapter

i Can use IBM DVD Images with my USB 3.0 Adapter

Read More

Open your i – J. Gorzinski's Blog

Blog date	Blog link
February 28, 2018	The Top 3 Reasons System Admins Should Care about Open Source on IBM i
December 06, 2017	IBM i Open Source and the Talent That Follows
November 21, 2017	Cleared for Takeoff With Node.js on IBM i
November 14, 2017	IBM Cloud, Watson and Web Services Help Applications Fly
October 02, 2017	Java Goes Open Source! (IBM i edition)
August 29, 2017	Eight Reasons to Embrace SSH
August 10, 2017	Tech Tip: Be Like a Turtle!
July 07, 2017	Level Up With PTF Group Level 4!
June 16, 2017	Let's Learn About Ublu
May 24, 2017	A Tale of Two Web Servers
April 22, 2017	Why Contribute Code to the Open-Source Community?
March 06, 2017	One Small Program, Two Powerful Messages

VIDEO SOLUTIONS EDITION

IBM Systems
MAGAZINE

AIX

LINUX ON POWER

MAINFRAME

POWER

IBM i

ADMINISTRATOR

DEVELOPER

TRENDS

TIPS & TECHNIQUES

CASE STUDIES

Blog

Open Your i



By Jesse Gorzinski



 Tweet

 SHARE
 


 RSS

Previous Post | See All Posts

IBM i Open Source and the Talent That Follows

December 06, 2017

Today's topic is IBM i development skills. IBM has been committed to ensuring that talented employees of all backgrounds can flourish on the platform. This is evident with the evolution of RPG, the continued enhancement of developer tools, the invention of Open Access, and so on. Of course, open source technology definitely plays an important role in this strategy! I wanted to share a real-life example. So, for today's article, I've asked James Hodgkinson to share his company's experience. James is an information systems leader at a Midwest manufacturer. They've seen first-hand how open source can bring top-notch talent (and easy value) to the platform. I thank them for sharing! Take it away, James...

Almost two years ago to the day, my organization was tasked with the challenge of replacing a long-time associate. By now you know the story, her void left big shoes to fill—ranging from her deep understanding of business logic to the intimate knowledge of the

Recent Posts

IBM i Open Source and the Talent That Follows

12/06/2017

iDevelop – Susan & Jon

Blog date	Blog link
April 16, 2018	Thirty Years: Time Flies When You're Having Fun
February 14, 2018	IBM i Loves RPG
January 16, 2018	New Year, New RD!
November 02, 2017	Susan's Turn: My First Job in IT
September 24, 2017	Jon's First IT Job
August 16, 2017	IBM i News You May Have Missed
June 23, 2017	Need Another Reason to Convert to RPG IV?
June 06, 2017	The IT Skills Gap
April 11, 2017	SEU was holding me back.
March 01, 2017	Check Out the Latest in RD!
February 15, 2017	Valentines for RPGers
February 02, 2017	The Year Ahead
January 22, 2017	Our Top 5 Highlights of 2016

iDevelop *Application Development for IBM i*



By Jon and Susan

 Tweet

 SHARE   

 RSS

Recent Posts

[Thirty Years: Time Flies When You're Having Fun](#)
04/16/2018

[IBM i Loves RPG](#)
02/14/2018

[New Year, New RD!](#)

[Previous Post](#) | [Next Post](#) | [See All Posts](#)

IBM i Loves RPG

February 14, 2018



Happy Valentines's Day! With everyone declaring their undying love for one another today, we thought we'd investigate the ongoing and still vibrant relationship between RPG and IBM i.

Just yesterday, IBM announced the latest round of Technology Refreshes for IBM i: [TR 4 for 7.3](#) and [TR 8 for 7.2](#).

The big hype is likely to be surrounding the support for Power9 servers, which is definitely cool and exciting--if you're into hardware. In many shops, RPGers do a bit of everything and we're sure many of you will want to read up on all the latest news about Power9. But not here.

DB2 for i & Web Query – Mike Cain

<i>Blog date</i>	<i>Blog link</i>
April 13, 2018	Data: The New Currency
December 05, 2017	Making the Case for a Database Engineer - Again
October 03, 2017	Interesting Db2 items in the latest TR!
August 14, 2017	Are You Open to Open Source Databases?
March 16, 2017	Using SAP on IBM i?
February 17, 2017	A Few More Tools
February 10, 2017	Want to be a Hero?

<i>Blog date</i>	<i>Blog link</i>
February 19, 2018	To SQL or not to SQL - with Db2 Web Query
October 03, 2017	New Db2 Web Query Version 2.2.1 Announced!
May 25, 2017	DB2 Web Query: BI on a Budget Webinar

DB2 for i

Insight and perspectives on data management using IBM i



Friday, April 13, 2018

Data: The New Currency

In this month's issue of the *IBM Systems Magazine - POWER edition*, author Neil Tardy shares some observations and insights on the importance of realizing maximum value from data through collaboration.

If you have not already read the piece, you can check it out [here](#).

I highly recommend you share it with your business leaders and executives, taking advantage of the opportunity to discuss and reevaluate your collection and use of data.

Please reach out to me if you need assistance with the conversation, and as you persevere to do more, and do better.

Posted by [Mike Cain](#) at 6:50 AM No comments:



DB2 Web Query for i

Insight and perspectives on DB2 Web Query and Analytics using IBM i

Monday, February 19, 2018

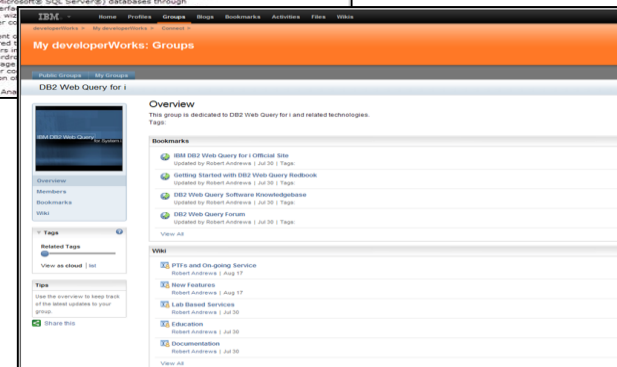
To SQL or not to SQL - with Db2 Web Query

Sometimes I find myself *alking out of both sides of my mouth* when discussing Db2 Web Query capabilities. The term is related to contradicting yourself – maybe saying one thing to one person, and another, opposite thing to another.


While certainly not trying to deceive anyone, the association with Db2 Web Query is about whether you need to be an SQL programmer to use it. The short answer is, ABSOLUTELY NOT. However, out the other side of my mouth, I have to say, it certainly can be an advantage if you do know SQL!

To Learn More on DB2 Web Query

- Db2 Web Query for i Website
 - ibm.biz/db2webqueryi
- Db2 Web Query for i Wiki
 - ibm.co/db2wqwiki
- Db2 Web Query Getting Started Enablement:
 - <https://ibm.biz/db2wqconsulting>
- Db2 Web Query Version 2.2.1
 - <http://ibm.biz/db2wqv221blog>
- EZ-Install
 - <http://ibm.biz/db2wqezinstall-info>
- Follow Db2 Web Query guy Doug Mack on twitter at @mckdrmol or check out his blog at <http://db2webqueryi.blogspot.com/> for the latest info



For More Information:

Some Links You Need	 Twitter	#Hashtags
<p>IBM i Home Page: www.ibm.com/systems/i</p> <p>IBM Systems Magazine IBM i Edition: http://ibmsystemsmag.com/ibmi/</p> <p>Support Life Cycle: https://www-01.ibm.com/software/support/ibmi/lifecycle/</p> <p>License Topics: https://www-01.ibm.com/support/docview.wss?uid=nas8N1022087</p>	<p> @IBMSystems @COMMONug @IBMChampions @IBMSystemsISVs @IBMiMag @ITJungleNews @SAPonIBMi @SiDforIBMi </p>	<p> #PowerSystems #IBMi #IBMAIX #POWER8 #LinuxonPower #OpenPOWER #HANAonPower #ITinfrastructure #OpenSource #HybridCloud #BigData </p>

For More Information:

Blogs	
<p><u>IBM Blogs:</u></p> <p><u>IBM Systems Magazine You and i (Steve Will)</u></p> <p><u>IBM Systems Magazine i-Can (Dawn May)</u></p> <p><u>IBM Systems Magazine: Open your i (Jesse Gorzinski)</u></p> <p><u>IBM DB2 for i (Mike Cain)</u></p> <p><u>IBM DB2 Web Query for i (Doug Mack)</u></p> <p><u>IBM Champion's Blogs:</u></p> <p><u>IBM Systems Magazine: iDevelop (Jon Paris and Susan Gantner)</u></p> <p><u>IBM Systems Magazine: iTalk with Tuohy</u></p>	<p><u>http://ibmsystemsmag.com/blogs/you-and-i/</u></p> <p><u>http://ibmsystemsmag.com/blogs/i-can/</u></p> <p><u>http://ibmsystemsmag.com/blogs/open-your-i/</u></p> <p><u>http://db2fori.blogspot.co.uk/</u></p> <p><u>http://db2webqueryi.blogspot.co.uk/</u></p> <p><u>http://ibmsystemsmag.com/blogs/idevelop/</u></p> <p><u>http://ibmsystemsmag.com/ibmi/trends/italk-with-tuohy/</u></p>

Volubis Pause-café

Consultez la liste des archives :

Pause-café n° 78 / Mars 2018	TR4, Web services et Watson
Pause-café n° 77 / Janvier 2018 (Vidéo)	TR3, et protection des données (GDPR)
Pause-café n° 76 / Octobre 2017 (Vidéo)	TR2, Produits open source et ACS
En Mai 2017, nous participions aux journées IBM : Université du i 2017	<ul style="list-style-type: none"> • 17 Mai, 14h API REST, retour d'expérience- S2 • 18 Mai, 13h30 XML vs JSON - S34 • 18 Mai 15h15 Git et Orion - S42
Pause-café n° 75 / Mars 2017 (Vidéo)	TR1, RDI 9.5.1.1 ,Projet OSSILE
Pause-café n° 74 / Octobre 2016	Suite version 7.3, Git et Orion Nouvelles versions : ACS &WQX.
pause-café n° 73 / Mai 2016	TR4 et version 7.3

<http://www.volubis.fr/pausecafe.html>